

INSTRUCTION SHEET

for: **Part No. 2JA 980 879-xxx / 980879xx**



Interior / Exterior LED Awning Lamp

2JA 980 879-0xx: White, 12V DC Only

2JA 980 879-1xx: White, 24V DC Only

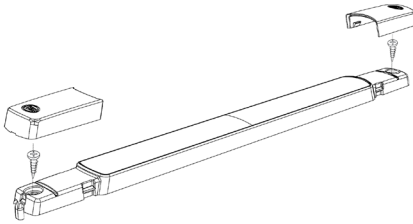
2JA 980 879-2xx: Warm White, 12V DC Only

2JA 980 879-3xx: Warm White, 24V DC Only

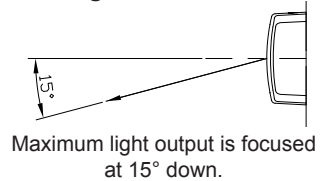
LED lamps offer many advantages over incandescent lighting including a slim design, significantly reduced power consumption, reduced heat and a high resistance to shock, vibration and moisture for a long service life in harsh environments.

Product Specifications

Lens Material	Grilamid® - enhanced impact & UV resistant nylon
Colour Temperature	5000K (White) 3000K (Warm White)
Dimming	Capable to be dimmed
Cable	Pre-wired with 2.5m of twin core automotive cable
Operating Voltage	12V DC or 24V DC
Power Consumption	< 3.0W (<0.25A @ 12V / <0.1A @ 24V)
Degree of Protection	IP6K7 / IP6K9K
Weight	110g (including cable)
Installation	Surface mount (2 screws)



Light Distribution

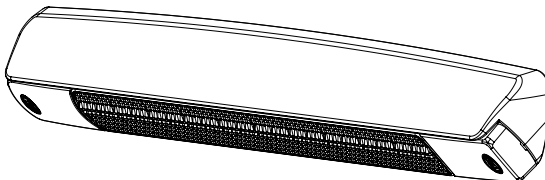


Mounting Instructions

- Lamp must be mounted on a flat surface with no curvature.
- For correct light distribution the lens engraving "TOP" should be mounted correctly.
- Drill two 3 mm Ø mounting holes at 265 mm centres through the mounting surface to allow fitment of the lamp.
- A mounting bracket, pictured assembled to a lamp below, with a 45° mounting angle can be purchased separately (P/N 8HG 958 000-021 Charcoal Bracket & 8HG 958 000-011 White Bracket). The mounting bracket, when used in conjunction with the lamp, was specifically designed to suit awning lamp applications and reduce the glare when mounted at eye level on a vertical surface.
- Using the mounting screws tighten the lamp to the mounting surface (Maximum torque 1.5Nm).
- Fit screw caps.

Note: Do not overtighten the mounting screws in the plastic lens.

If it is necessary to remove the screw caps, lever them out with a small flat head screw driver.



INSTRUCTION SHEET

for: **Part No. 2JA 980 879-xxx / 980879xx**



Wiring Instructions

Lamp is polarity conscious. The reversal of the polarity will not damage this product but will inhibit its function. HELLA recommends wire connections be soldered and heat shrink tubing applied to seal the joint.

Wire Colour	Connect to	Power Consumption
Black	Earth (-)	-
Red	Signal (+)	3 watts

Note 1: Lamp must be protected by a fuse rated at 3 amperes maximum.

Note 2: Do not attempt to open - no serviceable parts inside.

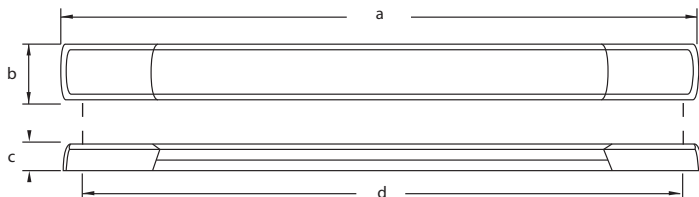
Protection against damage due to voltage spikes

The lamp is protected against reverse polarity connection and negative voltage spikes of up to 1000 volts.

Electric Welding

Electric Welding may damage the LED lamps. For LED lamps, HELLA recommends the negative connection to be wired isolated from the vehicle chassis. If the lamp uses the chassis as the earth return it is recommended that this earth return is disconnected during electric welding.

Lamp Dimensions



Dimensions

a = 283 mm
b = 25 mm
c = 11 mm
d = 265 mm

FIT AND FORGET - BY DESIGN

Congratulations, the product you have selected comes from **HELLA** - a world leader in LED lighting design.



Following the launch of the first LED automotive signal lamps in 1990, **HELLA** Design and Innovation continues to set new standards. **HELLA** innovative solutions have been incorporated into millions of lamps, engineered and tested to the most stringent standards, to suit the most demanding environmental conditions.

The cornerstone to the success of our products is our no compromise **Fit and Forget - by Design** philosophy which is incorporated into every step of the product life cycle.

In a world consuming finite resources at an ever faster rate, **Fit and Forget - by Design** is the right environmental choice that also makes perfect economic sense to customers that consider the total life cycle Cost of Ownership.