



# Marker and Signal Lamps

“HELLA’s fit and forget philosophy allows us to have peace of mind that using a high quality and reliable product will avoid any costly downtime while our vehicles are on the road.”

Jake Lambert, Manager, APL Direct Ltd



# Contents

## Marker and Signal Lamps

Quick Reference Product Guide.....	12-13	110mm Round LED .....	47-48
DuraLED® Lifetime Warranty.....	14-15	83mm Round LED.....	49-51
HELLA Compatibility Solution.....	16-17	LED Surface Mount Strip Lamps .....	52-55
DuraLED® .....	18-20	LED Strip Marker and Signal.....	56
DuraLED® Polycarbonate Lamps .....	21	LED High Level Brake Lamps.....	57
DuraLED® Combi Lamps .....	22-25	LED Recess Mount Marker.....	58
DuraLED® Marker Lamps.....	26-34	LED Surface Mount Marker .....	59
EuroLED® Rear Lamps.....	35	Supplementary Side Direction Indicator Lamps.....	60
LED Number Plate Lamps.....	36-37	Rear Bulb Combination Lamps .....	61
LED Combination Lamps .....	38-41	Accessories.....	62-67
Jumbo-S LED Lamps.....	42-43	Reflectors .....	68-69
Designline LED Modules .....	44-45	Lamp Spare Parts .....	70-71
Jumbo LED Modules.....	46		

# QUICK REFERENCE PRODUCT GUIDE

## LED COMBINATION LAMPS



PAGE 22



PAGE 24



PAGE 25



PAGE 39



PAGE 43



PAGE 45



PAGE 40



PAGE 51



PAGE 55

## LED SINGLE FUNCTION LAMPS



PAGE 19



PAGE 42



PAGE 44



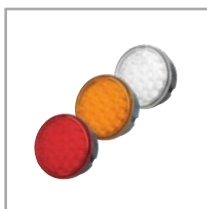
PAGE 46



PAGE 35



PAGE 48



PAGE 50



PAGE 54



PAGE 56



PAGE 57

## LED MARKER LAMPS



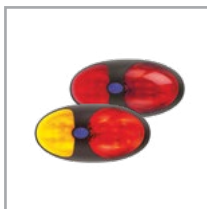
PAGE 28



PAGE 30



PAGE 32



PAGE 34

LED MARKER LAMPS



PAGE 26



PAGE 36



PAGE 58



PAGE 59

BULB LAMPS



PAGE 60



PAGE 60



PAGE 60



PAGE 60



PAGE 61



PAGE 61



PAGE 61

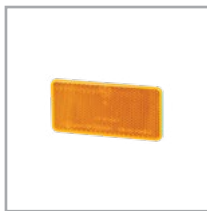
REFLECTORS



PAGE 68



PAGE 68



PAGE 69

ACCESSORIES



PAGE 62

**GRILAMID® LENS**

Toughness against impact.  
UV & chemical resistant.  
Will not fade or embrittle.

**CONCEALED MOUNTING**

**MOUNTING BUSH**

Easy to mount on uneven surfaces.

**REFLECTOR**

Inbuilt retro reflector beneath the outer lens.

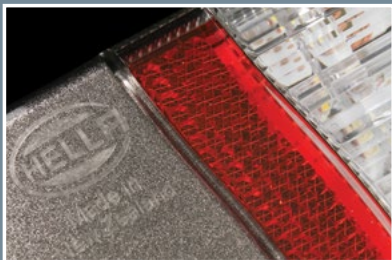
**CABLE**

Glue bath cable entry  
IP 6K7, IP 6K9K.

**LEDS**

High quality LEDs  
& the latest electronic  
technology.

**DURALED® BUILT TO LAST**





# DURALED® LIFETIME WARRANTY

HELLA New Zealand offers a Lifetime Warranty for all automotive LED based lighting products that carry the DuraLED® brand.

The DuraLED® range has been specifically engineered by HELLA using proven design principles, precision manufacturing, robust quality systems and a selection of ultra-durable materials and components to ensure an ultra-long operating life.

HELLA's relentless pursuit to create a truly Fit and Forget range of lighting solutions has led to the creation of the DuraLED® range which represents the pinnacle of our no compromise philosophy and commitment to long-term durability and road safety.

After over 20 years of strenuous testing, continuous improvement and proven real world reliability HELLA is proud to stand behind the DuraLED® range with an industry leading Lifetime Warranty.

Whenever you see this DuraLED® logo you will have the confidence to install products that are designed and warranted to last the economic life of the vehicle they were first installed on.



# HELLA COMPATIBILITY SOLUTION (HCS)

HELLA HCS lamps, electronic control and flasher units are designed to the latest ISO International Standard to provide compatibility with commercial vehicle indicator failure systems.



Such pure resistive load solutions can be problematic for the following reasons:

- They mask the possible failure of the actual LED signal lamp itself.
- In many cases such pure resistive solutions do not function as they provide a linear time/current response which is significantly different to the time/current response of a bulb filament when it heats up, as in the initial heat-up period the bulbs consume significantly more power than the rated 21 Watt.
- Additional parallel resistors consume a significant amount of energy and thus negate the lower power advantage that LED lamps offer.



Vehicles driven on public roads require the operation of direction indicator lamps to be monitored and a fault instantly signalled

to the driver. Direction indicator lamps are an important road safety feature, signalling the direction change of the vehicle. Failure to signal or failure to recognise a direction indicator signal poses a significant risk of causing an accident.

LED direction indicator lamps offer a reliable Fit and Forget solution and have become the choice for cost conscious transport operators. LED lamps with their low power consumption and Multivolt™ features, are often a challenge

for existing lamp failure detection systems on modern trucks and buses.

Transport fleets often feature a mix of trailers equipped with bulb based lamps as well as trailers with full LED based lighting solutions. For the efficient operation of the fleet, each of these trailers should be compatible with the indicator failure detection systems of any of the trucks in the fleet, both now and in the future.

Some manufacturers recommend fitting additional resistive loads in parallel to the LED lamps, to simulate the 21 watts consumed by a traditional bulb lamp.

LED lamps marked with the HCS symbol feature patented indicator failure control technology which allows seamless communication with HELLA HCS control flasher units, or modern European trucks with body controllers compliant with the ISO 13207-1 standard.

## International Organisation for Standardisation

The International Organisation for Standardisation (ISO) is a network of national standards bodies working together to develop International Standards with the common goal of making international trade and industry more effective and efficient. The standards operate by global consensus, with many governments adopting the standards into their legislation.



“HELLA New Zealand has been instrumental in the development of the HELLA Compatibility System (HCS)”

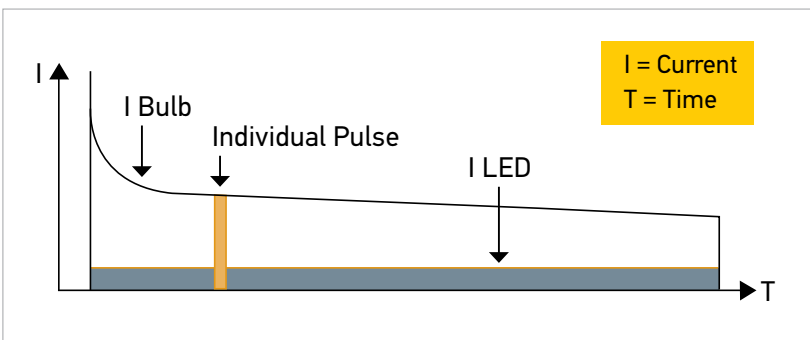
**ISO 13207-1 Standard**

ISO 13207-1 specifies a precisely timed pulse for a low power LED lamp, which momentarily mimics the power consumption of a conventional incandescent bulb. This pulse is suppressed when the LED direction indicator diagnoses itself as faulty. An ISO 13207-1 compatible flasher or vehicle body controller interprets the pulse suppression and alerts the driver to a faulty lamp or faulty wiring. Body Control Modules or HCS flasher units together with LED lamps designed to ISO 13207-1 maintain the benefit of low power LED lamps, as opposed to a parallel resistor which increases the power consumption to that of a 21 watt bulb.

HELLA New Zealand has been instrumental in laying the groundwork for the development of the HELLA Compatibility Solution (HCS), which became the blueprint for the new ISO 13207-1 standard. HELLA HCS lamps are fully compliant with ISO 13207-1.

ISO 13207-1 has been agreed to by European truck manufacturers and will be incorporated into the vehicle monitoring electronics of European trucks. Astute transport fleet operators are already future-proofing their trailers by specifying HELLA HCS Fit and Forget LED lighting solutions which will be plug-and-play with the 24 volt European trucks of tomorrow.

HELLA lamps which incorporate HCS readily comply with ISO 13207-1.



The HCS innovation generates a pulse that simulates the current draw equivalent to an incandescent bulb.

**HELLA HCS Lamps**

HELLA products throughout this catalogue displaying the HCS logo incorporate HELLA Compatibility Solutions technology.

2VP 980 980-001

2BA 959 822-641      2SD 980 613-201  
2SD 980 602-201

2VP 980 761-821

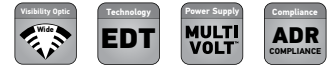
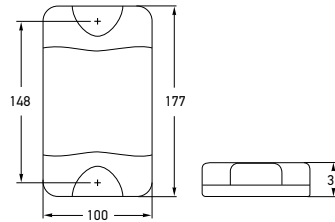
2BA 980 607-011      2BA 959 041-511  
2BA 980 607-511      2BR 980 761-061

A selection of HCS products.



### DuraLED® Stop/Rear Position Lamp with Night Light

DuraLED® stop, rear position lamp featuring Enhanced Definition Technology (EDT) for increased safety and awareness. Night light function allows illumination of the rear position lamp independently from the remaining marker lamps on the vehicle. Features HELLA Ultra Wide Visibility Optics for significantly improved side visibility.



<b>2SB 959 060-251</b>	<b>2330V</b>
Mounting	Surface mount with mounting bushes supplied. Suitable for vertical mounting.
Voltage	Multivolt™ for optimum brightness at input voltages from 9 to 33 volts.
Power Consumption	Stop: 6W    Rear position: 2.5W    Night: 2.5W
Protection	Reverse polarity and 5000 watt Transient Voltage Suppressor (TVS) IP 6K6 (Protection against dust and high-pressure water jets) IP 6K7 (Protection against dust and temporary water immersion)
Cable Length	Pre-wired with 2.5m of sheathed multi-core cable.
Compliance	ADR 49/00    E24 5850    ECE R7/02

See page 62 for DuraLED® accessories.

### DuraLED® Rear Direction Indicator Lamp

DuraLED® rear direction indicator lamp for trucks, buses, caravans and trailers. Features HELLA Ultra Wide Visibility Optics for significantly improved side visibility.



<b>2BA 959 070-251</b>	<b>2151V</b>	
<b>2BA 980 607-511</b>	<b>2151VCS</b>	<b>HCS TECHNOLOGY</b>
Mounting	Surface mount with mounting bushes supplied. Suitable for vertical mounting.	
Voltage	Multivolt™ for optimum brightness at input voltages from 9 to 33 volts.	
Power Consumption	2BA 959 070-251    6W 2BA 959 070-511    4W	
Protection	Reverse polarity and 5000 watt Transient Voltage Suppressor (TVS) IP 6K6 (Protection against dust and high-pressure water jets) IP 6K7 (Protection against dust and temporary water immersion)	
Cable Length	Pre-wired with 2.5m of sheathed multi-core cable.	
Compliance	2BA 959 070-251:    ADR 6/00: Cat 2a 2BA 980 607-511:    E24 5850    ECE R6/01 ISO 13207-1	

See page 16 for further information on HCS Technology and ISO 13207-1.

### DuraLED® Reversing Lamp

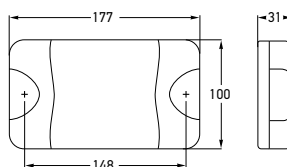
DuraLED® reversing lamp for trucks, buses, caravans and trailers.



<b>2ZR 959 070-551</b>	<b>1430V</b>
Mounting	Surface mount with mounting bushes supplied. Suitable for vertical mounting.
Voltage	Multivolt™ for optimum brightness at input voltages from 9 to 33 volts.
Power Consumption	4W
Protection	Reverse polarity and 5000 watt Transient Voltage Suppressor (TVS) IP 6K6 (Protection against dust and high-pressure water jets) IP 6K7 (Protection against dust and temporary water immersion)
Cable Length	Pre-wired with 2.5m of sheathed multi-core cable.
Compliance	ADR 1/00    E24 5850    ECE R23/00

Reversing lamps are not designed for continuous operation.

MARKER AND SIGNAL LAMPS



2SB 959 060-351	2330H	
2SB 959 060-002	2330BL	
2SB 959 060-357	2330HBULK	PACK OF 4

Mounting	Surface mount with mounting bushes supplied. Suitable for horizontal mounting.		
Voltage	Multivolt™ for optimum brightness at input voltages from 9 to 33 volts.		
Power Consumption	Stop: 6W	Rear position: 2.5W	Night: 2.5W
Protection	Reverse polarity and 5000 watt Transient Voltage Suppressor (TVS) IP 6K6 (Protection against dust and high-pressure water jets) IP 6K7 (Protection against dust and temporary water immersion)		
Cable Length	Pre-wired with 2.5m of sheathed multi-core cable. Super seal versions are pre-wired with 250mm of sheathed multi-core cable.		
Compliance	ADR 49/00	E24 5850	ECE R7/02

See page 62 for DuraLED® accessories.

DuraLED® Stop/Rear Position Lamp with Night Light

DuraLED® stop, rear position lamp featuring Enhanced Definition Technology (EDT) for increased safety and awareness. Night light function allows illumination of the rear position lamp independently from the remaining marker lamps on the vehicle. Features HELLA Ultra Wide Visibility Optics for significantly improved side visibility.



2SB 959 060-002



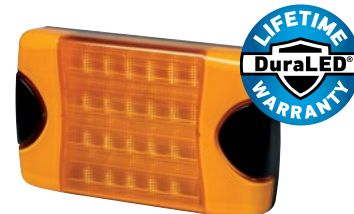
2BA 959 070-351	2151H	
2BA 959 070-012	2151BL	
2BA 959 070-357	2151HBULK	PACK OF 4
2BA 980 607-011	2151HCS	HCS TECHNOLOGY

Power Consumption	2BA 959 070-351, 2BA 959 070-352, 2BA 959 070-357	6W
	2BA 980 607-011	4W
Compliance	2BA 959 070-351, 2BA 959 070-352, 2BA 959 070-357	ADR 6/00: Cat 2a
	2BA 980 607-011:	E24 5850 ECE R6/01 ISO 13207-1

Other specifications as per 2SB 959 060-351. See page 16 for further information on HCS Technology and ISO 13207-1.

DuraLED® Rear Direction Indicator Lamp

DuraLED® rear direction indicator lamp for trucks, buses, caravans and trailers. Features HELLA Ultra Wide Visibility Optics for significantly improved side visibility.



2BA 959 070-012



2ZR 959 070-501	1430H	
Power Consumption	4W	
Compliance	ADR 1/00	E24 5850 ECE R23/00

Other specifications as per 2SB 959 060-351. Reversing lamps are not designed for continuous operation.

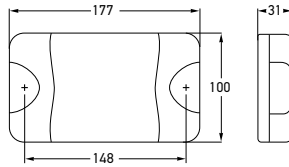
DuraLED® Reversing Lamp

DuraLED® reversing lamp for trucks, buses, caravans and trailers.



### DuraLED® Stop/Rear Position Lamp with Night Light

DuraLED® stop, rear position lamp featuring Enhanced Definition Technology (EDT) for increased safety and awareness. Night light function allows illumination of the rear position lamp independently from the remaining marker lamps on the vehicle.

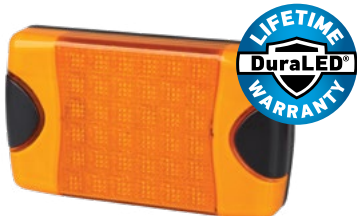


<b>2SB 959 060-001</b>	<b>2330</b>	
<b>2TA 959 060-017</b>	<b>2330BULK</b>	<b>PACK OF 4</b>
Mounting	Surface mount with mounting bushes supplied. Suitable for horizontal or vertical mounting.	
Voltage	Multivolt™ for optimum brightness at input voltages from 9 to 33 volts.	
Power Consumption	Stop: 6W Rear position: 1W Night: 1W	
Protection	Reverse polarity and 5000 watt Transient Voltage Suppressor (TVS) IP 6K6 (Protection against dust and high-pressure water jets) IP 6K7 (Protection against dust and temporary water immersion)	
Cable Length	Pre-wired with 2.5m of sheathed multi-core cable.	
Compliance	ADR 49/00	

See page 62 for DuraLED® accessories.

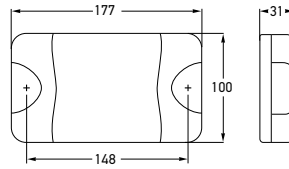
### DuraLED® Rear Direction Indicator Lamp

DuraLED® rear direction indicator lamp for trucks, buses, caravans and trailers.



<b>2BA 959 070-001</b>	<b>2151</b>	
<b>2BA 959 070-007</b>	<b>2151BULK</b>	<b>PACK OF 4</b>
Mounting	Surface mount with mounting bushes supplied. Suitable for horizontal or vertical mounting.	
Voltage	Multivolt™ for optimum brightness at input voltages from 9 to 33 volts.	
Power Consumption	9W	
Protection	Reverse polarity and 5000 watt Transient Voltage Suppressor (TVS) IP 6K6 (Protection against dust and high-pressure water jets) IP 6K7 (Protection against dust and temporary water immersion)	
Cable Length	Pre-wired with 2.5m of sheathed multi-core cable.	
Compliance	ADR 6/00: Cat 2a	

MARKER AND SIGNAL LAMPS



<b>2SB 959 060-207</b>	<b>2331BULK</b>	<b>PACK OF 4</b>
Mounting	Surface mount with mounting bushes supplied. Suitable for horizontal or vertical mounting.	
Voltage	Multivolt™ for optimum brightness at input voltages from 9 to 33 volts.	
Power Consumption	Stop: 6W Rear position: 1W Night: 1W	
Protection	Reverse polarity and 5000 watt Transient Voltage Suppressor (TVS) IP 6K6 (Protection against dust and high-pressure water jets) IP 6K7 (Protection against dust and temporary water immersion)	
Cable Length	Pre-wired with 2.5m of sheathed multi-core cable.	
Lens Material	Polycarbonate.	
Compliance	ADR 49/00	
See page 62 for DuraLED® accessories.		

DuraLED® Stop/Rear Position Lamp with Night Light

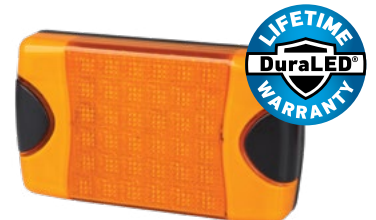
DuraLED® stop, rear position lamp made from polycarbonate, for off-road vehicles such as logging trucks. Night light function allows illumination of the rear position lamp independently from the remaining marker lamps on the vehicle, resulting in low power consumption.



<b>2BA 959 070-217</b>	<b>2152BULK</b>	<b>PACK OF 4</b>
<b>2BA 959 070-371</b>	<b>2152HCS</b>	<b>HCS TECHNOLOGY</b>
Mounting	Surface mount with mounting bushes supplied. Suitable for horizontal or vertical mounting.	
Voltage	Multivolt™ for optimum brightness at input voltages from 9 to 33 volts.	
Power Consumption	9W	
Protection	Reverse polarity and 5000 watt Transient Voltage Suppressor (TVS) IP 6K6 (Protection against dust and high-pressure water jets) IP 6K7 (Protection against dust and temporary water immersion)	
Cable Length	Pre-wired with 2.5m of sheathed multi-core cable.	
Lens Material	Polycarbonate.	
Compliance	ADR 6/00: Cat 2a	

DuraLED® Rear Direction Indicator Lamp

DuraLED® rear direction indicator lamp made from polycarbonate for off-road vehicles such as logging trucks.



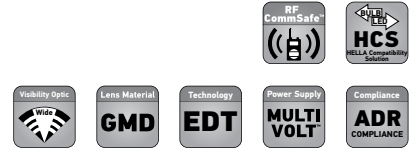
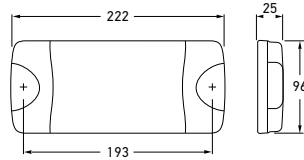
Polycarbonate Lenses

Whilst polycarbonate features a higher impact resistance compared to our preferred Enhanced Impact Acrylic, the trade-off for polycarbonate is its lower resistance to a number of commonly used chemicals.

For applications where both extreme impact resistance as well as a high resistance to chemicals is required, we recommend HELLA LED lamps manufactured from Swiss-made Grilamid® Optical Nylon.

**DuraLED® Combi-S Stop/Rear Position/Rear Direction Indicator Lamp - Heavy Duty**

DuraLED® combination lamp featuring Ultra Wide Visibility Optics for significantly improved side visibility and Enhanced Definition Technology (EDT). Suitable for commercial vehicles and boat trailers. Shockproof and fully sealed to withstand water submersion and high-pressure washing. Optic appears clear until illuminated.



2SD 980 613-002



Ultra slim height of only 25mm.

2SD 980 613-001	2378	
2SD 980 613-002	2378BL	BLISTER PACK
2SD 980 613-007	2378BULK	PACK OF 12
2SD 980 613-201	2378CS	HCS TECHNOLOGY
2SD 980 613-031	23786M	6M CABLE
2SD 980 613-037	23786MBULK	6M CABLE PACK OF 12

Mounting	Surface mount with mounting bushes supplied. Suitable for horizontal or vertical mounting.		
Voltage	Multivolt™ for optimum brightness in 12 and 24 volt systems.		
Power Consumption	Stop: Rear direction indicator:	5W 5W	Rear position: 1W
Protection	Reverse polarity and 5000 watt Transient Voltage Suppressor (TVS). IP 6K7 (Protection against dust and temporary water immersion) IP 6K9K (Protection against dust and high-pressure/steam jet cleaning)		
Cable Length	2SD 980 613-001, 2SD 980 613-002, 2SD 980 613-007, 2SD 980 613-201 Pre-wired with 2.5m of sheathed multi-core cable 2SD 980 613-031, 2SD 980 613-037 Pre-wired with 6m of sheathed multi-core cable		
Lens Material	High impact and chemical resistant Grilamid® lens		
Compliance	ADR 6/00: Cat 2a E24 5883	ADR 49/00 ECE R6/01	ISO 13207-1 (2SD 980 613-201 only) ECE R7/02

See page 62 for DuraLED® accessories. See page 16 for further information on HCS Technology and ISO 13207-1.

**COMBI-S LAMP FUNCTIONS**



**DuraLED® Combi-S Trailer Lighting Kit**

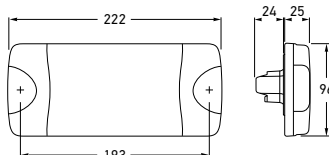
A complete Fit and Forget solution for commercial trailers or boat trailers.



2VB 980 613-801	2378TP
Kit Contents	Each trailer lamp kit contains: 2 x 2SD 980 613-001 DuraLED® Combi-S stop/rear position and rear direction indicator lamp with 6m sheathed multi-core cable. 2 x 8RA 003 326-035 Red retro reflector 1 x 2KA 959 640-341 LED number plate lamp with 5m sheathed multi-core cable. 1 x 8JA 910 032-001 7 pole flat plug



MARKER AND SIGNAL LAMPS

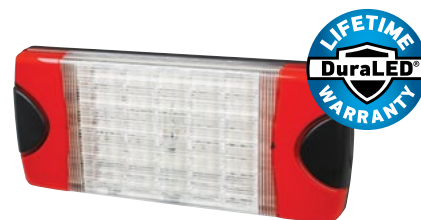


2SD 980 602-001	2378DT	
2SD 980 602-201	2378DTCS	HCS TECHNOLOGY
Mounting	Surface mount with mounting bushes supplied. Suitable for horizontal or vertical mounting.	
Voltage	Multivolt™ for optimum brightness in 12 and 24 volt systems.	
Power Consumption	Stop: 5W Rear position: 1W	Rear direction indicator: 5W Night: 1W
Protection	Reverse polarity and 5000 watt Transient Voltage Suppressor (TVS). IP 6K7 (Protection against dust and temporary water immersion) IP 6K9K (Protection against dust and high-pressure/steam jet cleaning)	
Accessory	8JA 959 736-801 6 pole DT plug, wedge and 6 contacts.	
Lens Material	High impact and chemical resistant Grilamid® lens	
Compliance	ADR 6/00: Cat 2a E24 5883	ADR 49/00 ECE R6/01 ISO 13207-1 (2SD 980 602-201 only) ECE R7/02

See page 16 for further information on HCS Technology and ISO 13207-1.

DuraLED® Combi-S Stop/Rear Position/Rear Direction Indicator Lamp and Night Light with DT Connector - Heavy Duty

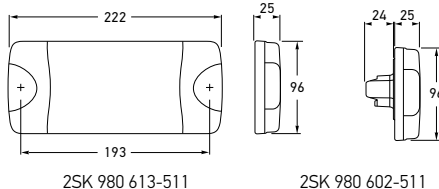
DuraLED® combination lamp featuring Ultra Wide Visibility Optics for significantly improved side visibility and Enhanced Definition Technology (EDT). Night light function allows illumination of the rear position lamp independently from the remaining marker lamps on the vehicle, resulting in low power consumption. Suitable for commercial and boat trailers. Shockproof and fully sealed to withstand water submersion and high-pressure washing. Optic appears clear until illuminated.



8JA 959 736-801  
Not included with lamp.



Rear view showing DT connector that allows application of self-adhesive heat shrink.



2SK 980 613-511	238324VCS	HCS TECHNOLOGY
2SK 980 602-511	2383DT24VCS (DT Connector)	HCS TECHNOLOGY
Mounting	Surface mount with mounting bushes supplied. Suitable for horizontal mounting.	
Voltage	24V	
Power Consumption	Stop: 3W Rear position: 1W Rear direction indicator: 3W	Reverse: 3W Night (2SK 980 602-511): 1W
Cable Length	Pre-wired with 2.5m of sheathed multi-core cable (except DT versions).	
Accessory	8JA 959 736-801 6 pole DT plug, wedge and 6 contacts.	
Compliance	E24 5894 ECE R6/01	ISO 13207-1 ECE R7/02 ECE R23/00

Other specifications as per 2SD 980 602-001.

DuraLED® Combi-S Stop/Rear Position/Rear Direction Indicator/Reversing Lamp and Night Light with DT Connector - Heavy Duty

DuraLED® combination lamp featuring modern clear lens design. Low power consumption and long life equates to economical running costs. Ideal for 24V commercial vehicles. Optic appears clear until illuminated.



Ultra slim height of only 25mm.

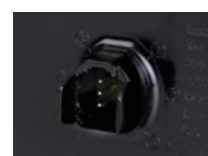
COMBINATION LAMP FUNCTIONS



Stop Rear position Rear direction indicator Reverse



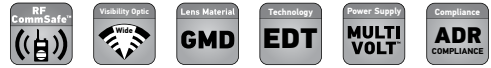
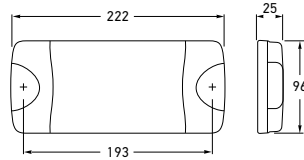
8JA 959 736-801  
Not included with lamp.



Rear view showing DT connector that allows application of self-adhesive heat shrink.

### DuraLED® Combi-R Stop/Rear Position/Rear Direction Indicator Lamp with Retro Reflector

DuraLED® combination lamp with 34cm<sup>2</sup> red retro reflector which features Enhanced Definition Technology (EDT). Suitable for light commercial and boat trailers. Shockproof and fully sealed to withstand water submersion and high-pressure washing.



2VA 980 710-002



Ultra slim height of only 25mm.

2VA 980 710-001	2377				
2VA 980 710-002	2377BL				BLISTER PACK
Mounting	Surface mount with mounting bushes supplied. Suitable for horizontal mounting.				
Voltage	Multivolt™ for optimum brightness in 12 and 24 volt systems.				
Power Consumption	Stop:	4W			
	Rear position:	1W			
	Rear direction indicator:	4W			
Protection	Reverse polarity and 5000 watt Transient Voltage Suppressor (TVS). IP 6K7 (Protection against dust and temporary water immersion) IP 6K9K (Protection against dust and high-pressure/steam jet cleaning)				
Cable Length	Pre-wired with 2.5m of sheathed multi-core cable.				
Lens Material	High impact and chemical resistant Grilamid® lens				
Compliance	ADR 47/00 E24 5882	ADR 6/00: Cat 2a ECE R6/01	ADR 49/00 ECE R7/02	ECE R3/02	
See page 62 for DuraLED® accessories.					

#### COMBI-R LAMP FUNCTIONS



Stop

Rear position

Rear direction indicator

### DuraLED® Combi-R Trailer Lighting Kit

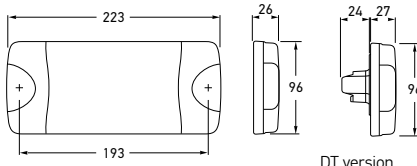
A complete Fit and Forget solution for trailers or caravans.



2VB 980 710-801	2377TP				
Kit Contents	Each trailer lamp kit contains: 2 x 2VA 980 710-001 DuraLED® Combi-R stop/rear position and rear direction indicator lamp with retro reflector and 6m sheathed multi-core cable. 1 x 2KA 959 640-341 LED number plate lamp with 5m sheathed multi-core cable. 1 x 8JA 910 032-001 7 pole flat plug				



MARKER AND SIGNAL LAMPS



DT version

**DuraLED® Combi-SR  
Stop/Rear Position/Rear Direction  
Indicator/Reversing Lamp  
with Retro Reflector**

The all-in-one five function Combi-SR Lamp retains the same mounting footprint while also incorporating a built-in retro reflector, saving both time and money on installation. The all-in-one design makes the Combi-SR the ideal choice for vehicles with limited space to mount a separate reflector.

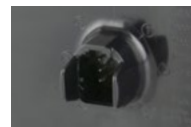


2VP 015 074-001	2380, 2380GMD & 2381 2.5m cable version	
2VP 015 074-002	2380BL 2.5m cable version	BLISTER PACK
2VP 015 074-007	2380BULK 2.5m cable version	PACK OF 12
2VP 015 074-101	2380CS 2.5m cable version	
2VP 015 075-001	2380DT DT version	CARTON PACK
2VP 015 075-101	2380DTCS DT version with HCS Technology	HCS

Mounting	Surface mount with mounting bushes supplied. Suitable for horizontal mounting.	
Voltage	Multivolt™ for optimum brightness in 12 and 24 volt systems.	
Power Consumption	Stop: 5W Rear position: 1.5W Rear direction indicator: 6W Reverse: 2W Night light: 1.5W (DT version only)	
Protection	Reverse polarity and 5000 watt Transient Voltage Suppressor (TVS). IP 6K7 (Protection against dust and temporary water immersion) IP 6K9K (Protection against dust and high-pressure/steam jet cleaning)	
Cable Length	Pre-wired with 2.5m of sheathed multi-core cable (non DT version)	
Accessory	8JA 959 736-801 6 pole DT plug, wedge and 6 contacts (DT version)	
Compliance	E24 5925 ECE R148/00 ECE R150/00 ECE R10/05 ISO 13207-1	
See page 62 for DuraLED® accessories.		



2VP 015 074-002



Rear view showing DT connector that allows application of self-adhesive heat shrink.



8JA 959 736-801  
Not included with lamp.

**COMBI-SR LAMP FUNCTIONS**



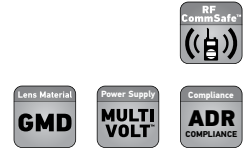
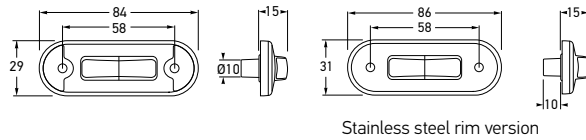
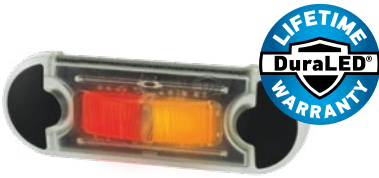
Stop Rear position Rear direction indicator Reverse

The Combi-SR is a direct replacement for the P/N 2380									
Combi-SR Part Number	Slim	Power Supply MULTI VOLT	RF CommSafe	Cable Length (m)	Built-in DT Connector	Lens Material GMD	HELLA Compatibility Solution HCS	Additional Functions	Succession Plan
2VP 015 074-001	✓	✓	✓	2.5	-	✓	-	-	Replaces 2380, 2380GMD & 2381
2VP 015 074-007	✓	✓	✓	2.5	-	✓	-	-	Replaces 2380BULK
2VP 015 075-001	✓	✓	✓	-	✓	✓	-	Night Light	Replaces 2380DT & 2380DTGMD
2VP 015 074-101	✓	✓	✓	2.5	-	✓	✓	-	
2VP 015 075-101	✓	✓	✓	-	✓	✓	✓	Night Light	



**DuraLED® Flush Mount Side Marker Lamp**

Red/amber flush mount side marker lamp. Featuring a low profile of only 15mm and an ultra durable Grilamid® nylon lens for extreme impact, UV, chemical and stress resistance. Optic appears clear until illuminated. With optional stainless steel rim.

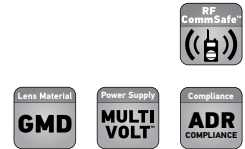
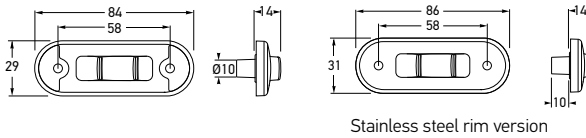


<b>2PS 980 868-001</b>	<b>2083</b>	
<b>2PS 980 868-017</b>	<b>2083BULK (Pack of 16)</b>	
<b>2KA 980 868-021</b>	<b>2083S</b>	<b>POLISHED STAINLESS STEEL RIM</b>
<b>2PS 980 868-037</b>	<b>2083SBULK (Pack of 16)</b>	
Mounting	Flush mount. Suitable for horizontal or vertical mounting.	
Voltage	Multivolt™ for optimum brightness in 12 and 24 volt systems.	
Power Consumption	<0.5W	
Protection	Reverse polarity protection. IP 6K7 (Protection against dust and temporary water immersion) IP 6K9K (Protection against dust and high-pressure/steam jet cleaning)	
Cable Length	Pre-wired with 0.5m of sheathed multi-core cable. Bulk pack pre-wired with 2.5m of sheathed multi-core cable.	
Spare Parts	9HD 980 858-007 9AB 959 685-002	Black screw caps (Pack of 4) Stainless steel rim - Polished
Lens Material	High impact and chemical resistant Grilamid® lens	
Compliance	ADR 45/01	

See pages 62-64 for DuraLED® marker lamp accessories.

**DuraLED® Flush Mount Supplementary Side Marker Lamp**

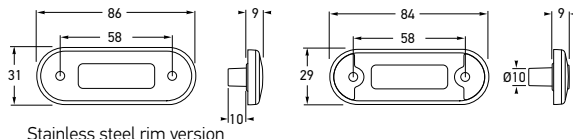
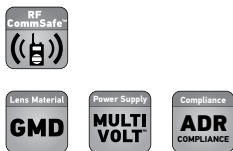
Amber side direction indicator lamps complement HELLA's popular DuraLED® range of flush mount marker lamps for a consistent look to your vehicle. Featuring a low profile of only 14mm and an ultra durable Grilamid® nylon lens for extreme impact, UV, chemical and stress resistance. Optic appears clear until illuminated.



<b>2BM 980 868-301</b>	<b>2086</b>	
<b>2BM 980 868-317</b>	<b>2086BULK (Pack of 16)</b>	
<b>2BM 980 868-321</b>	<b>2086S</b>	<b>POLISHED STAINLESS STEEL RIM</b>
<b>2BM 980 868-337</b>	<b>2086SBULK (Pack of 16)</b>	
Mounting	Suitable for horizontal or vertical mounting.	
Voltage	Multivolt™ for optimum brightness in 12 and 24 volt systems.	
Power Consumption	<0.5W	
Protection	Reverse polarity protection. IP 6K7 (Protection against dust and temporary water immersion) IP 6K9K (Protection against dust and high-pressure/steam jet cleaning)	
Cable Length	Pre-wired with 0.5m of sheathed multi-core cable. Bulk pack pre-wired with 2.5m of sheathed multi-core cable.	
Spare Parts	9HD 980 858-007 9AB 959 685-002	Black screw caps (Pack of 4) Stainless steel rim
Lens Material	High impact and chemical resistant Grilamid® lens	
Compliance	ADR 6/00: Cat 5	

See pages 62-64 for DuraLED® marker lamp accessories.

MARKER AND SIGNAL LAMPS



2PF 980 855-011	2059	
2PF 980 855-037	2059BULK (Pack of 16)	
2PF 980 855-021	2059S	POLISHED STAINLESS STEEL RIM
2PF 980 855-047	2059SBULK (Pack of 16)	POLISHED STAINLESS STEEL RIM
Mounting	Flush mount. Suitable for horizontal or vertical mounting.	
Voltage	Multivolt™ for optimum brightness in 12 and 24 volt systems.	
Power Consumption	<0.5W	
Protection	Reverse polarity protection. IP 6K7 (Protection against dust and temporary water immersion) IP 6K9K (Protection against dust and high-pressure/steam jet cleaning)	
Cable Length	Pre-wired with 0.5m of sheathed multi-core cable. Bulk pack pre-wired with 2.5m of sheathed multi-core cable.	
Spare Parts	9HD 980 858-007 9AB 959 685-002	Black screw caps (Pack of 4) Stainless steel rim - Polished
Lens Material	High impact and chemical resistant Grilamid® lens	
Compliance	ADR 49/00	

See pages 62-64 for DuraLED® marker lamp accessories.

DuraLED® Flush Mount Front Position/End Outline Lamp

White flush mount front position or front end outline LED lamp with optional stainless steel rim. Featuring a low profile ultra durable Grilamid® nylon lens for extreme impact, UV, chemical and stress resistance. Optic appears clear until illuminated.



2PF 980 855-201	2060	
2PF 980 855- 227	2060BULK (Pack of 16)	
2PF 980 855-211	2060S	POLISHED STAINLESS STEEL RIM
2PF 980 855-237	2060SBULK (Pack of 16)	POLISHED STAINLESS STEEL RIM

Other specifications as per 2PF 980 855-011

DuraLED® Flush Mount Front End Outline Lamp

Amber flush mount front end outline LED lamp for trailers with optional stainless steel rim. Featuring a low profile ultra durable Grilamid® nylon lens for extreme impact, UV, chemical and stress resistance. Optic appears clear until illuminated.



2XA 980 855-301	2310	
2XA 980 855-327	2310BULK (Pack of 16)	
2PF 980 855-311	2310S	POLISHED STAINLESS STEEL RIM
2XA 980 855-337	2310SBULK (Pack of 16)	POLISHED STAINLESS STEEL RIM

Other specifications as per 2PF 980 855-011

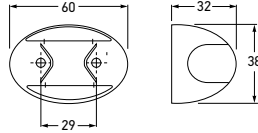
DuraLED® Flush Mount Rear Position/End Outline Lamp

Red flush mount rear position or rear end outline LED lamp with optional stainless steel rim. Featuring a low profile ultra durable Grilamid® nylon lens for extreme impact, UV, chemical and stress resistance. Optic appears clear until illuminated.



DuraLED® Side Marker Lamp

Red/amber side marker LED lamp.  
Optic appears clear until illuminated.



2PS 959 660-581    2PS 959 660-691

2PS 959 660-581	2053	
2PS 959 660-502	2053BULK	PACK OF 4
2PS 959 660-691	2053CHROME	CHROME PLATED
Mounting	Surface mount.	
Voltage	Multivolt™ for optimum brightness in 12 and 24 volt systems.	
Power Consumption	<1W	
Protection	Reverse polarity protection. IP 6K6 (Protection against dust and high-pressure water jets) IP 6K7 (Protection against dust and temporary water immersion)	
Cable Length	Pre-wired with 0.5m of sheathed multi-core cable. Bulk pack pre-wired with 2.5m of sheathed multi-core cable.	
Spare Part	9BG 910 274-001    Black nylon housing	
Compliance	ADR 45/01	
See pages 62-64 for DuraLED® marker lamp accessories.		

DuraLED® Side Marker Lamp - Grilamid®

Red/amber ultra high impact resistant side marker LED lamp featuring Grilamid® lens and nylon housing. Optic appears clear until illuminated.



2PS 959 660-481	2053GMD	
2PS 959 660-477	2053GMD BULK	PACK OF 4
Mounting	Surface mount.	
Voltage	Multivolt™ for optimum brightness in 12 and 24 volt systems.	
Power Consumption	<1W	
Protection	As per 2PS 959 660-581.	
Cable Length	Pre-wired with 0.5m of sheathed multi-core cable. Bulk pack pre-wired with 2.5m of sheathed multi-core cable.	
Spare Part	9BG 910 274-001    Black nylon housing	
Lens Material	High impact and chemical resistant Grilamid® lens	
Compliance	ADR 45/01	

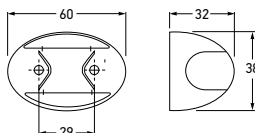
DuraLED® Cab Marker/Supplementary Side Direction Indicator Lamp (Cat. 5)

Amber cab marker or supplementary side indicator LED lamp. Optic appears clear until illuminated.



2BP 959 660-301	2026	
2BP 959 660-357	2026BULK	PACK OF 4
Mounting	Surface mount.	
Voltage	Multivolt™ for optimum brightness in 12 and 24 volt systems.	
Power Consumption	<1W	
Protection	As per 2PS 959 660-581.	
Cable Length	Pre-wired with 0.5m of sheathed multi-core cable. Bulk pack pre-wired with 2.5m of sheathed multi-core cable.	
Spare Part	9BG 910 274-001    Black nylon housing	
Compliance	ADR 6/00: Cat 5    ADR 45/01	

MARKER AND SIGNAL LAMPS



<b>2PF 959 570-502</b>	2054	
<b>2PF 959 570-527</b>	2054BULK	PACK OF 4
Mounting	Surface mount. Suitable for horizontal mounting.	
Voltage	Multivolt™ for optimum brightness in 12 and 24 volt systems.	
Power Consumption	<1W	
Protection	Reverse polarity protection. IP 6K6 (Protection against dust and high-pressure water jets) IP 6K7 (Protection against dust and temporary water immersion)	
Cable Length	Pre-wired with 0.5m of sheathed multi-core cable. Bulk pack pre-wired with 2.5m of sheathed multi-core cable.	
Spare Part	9BG 910 274-001 Black nylon housing	
Lens Material	High impact and chemical resistant Grilamid® lens	
Compliance	ADR 49/00	

See pages 62-64 for DuraLED® marker lamp accessories.

DuraLED® Front Position/  
End Outline Lamp

White ultra high impact resistant front end outline or front position LED lamp featuring Grilamid® lens and nylon housing. Optic appears clear until illuminated.



<b>2PF 959 570-391</b>	2051	
<b>2PF 959 570-347</b>	2051BULK	PACK OF 4
Mounting	Surface mount. Suitable for horizontal mounting.	
Voltage	Multivolt™ for optimum brightness in 12 and 24 volt systems.	
Power Consumption	<1W	
Protection	As per 2PF 959 570-502.	
Cable Length	Pre-wired with 0.5m of sheathed multi-core cable. Bulk pack pre-wired with 2.5m of sheathed multi-core cable.	
Spare Part	9BG 910 274-001 Black nylon housing	
Lens Material	High impact and chemical resistant Grilamid® lens	
Compliance	ADR 49/00	

DuraLED® Front End Outline Lamp

Amber ultra high impact resistant front end outline LED lamp for trailers featuring Grilamid® lens and nylon housing. Optic appears clear until illuminated.



<b>2XA 959 560-102</b>	2307	
<b>2XA 959 560-477</b>	2307BULK	PACK OF 4
Mounting	Surface mount. Suitable for horizontal mounting.	
Voltage	Multivolt™ for optimum brightness in 12 and 24 volt systems.	
Power Consumption	<1W	
Protection	As per 2PF 959 570-502.	
Cable Length	Pre-wired with 0.5m of sheathed multi-core cable. Bulk pack pre-wired with 2.5m of sheathed multi-core cable.	
Spare Part	9BG 910 274-001 Black nylon housing	
Lens Material	High impact and chemical resistant Grilamid® lens	
Compliance	ADR 49/00	

DuraLED® Rear Position/  
End Outline Lamp

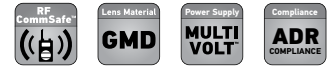
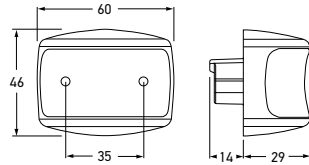
Red ultra high impact resistant rear end outline or rear position LED lamp featuring Grilamid® lens and nylon housing. Optic appears clear until illuminated.



MARKER & SIGNAL

**DuraLED® Heavy Duty Side Marker Lamp with DT Connector - Red/Amber**

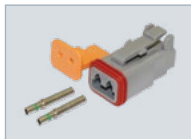
Heavy duty red/amber LED side marker lamp with DT connector and nylon housing. Featuring ultra durable Grilamid® nylon lens for extreme impact, UV, chemical and stress resistance. Optic appears clear until illuminated.



<b>2PS 980 990-001</b>	2073	
<b>2PS 980 990-007</b>	2073BULK	PACK OF 8
Mounting	Surface mount. Suitable for horizontal mounting.	
Voltage	Multivolt™ for optimum brightness in 12 and 24 volt systems.	
Power Consumption	<1W	
Protection	Reverse polarity protection. IP 6K7 (Protection against dust and temporary water immersion) IP 6K9K (Protection against dust and high pressure/steam jet cleaning)	
Spare Parts	8JA 959 736-811 2 pole DT plug, wedge and 2 contacts 8KB 958 757-501 2.0m sheathed cable with DT plug 9BG 980 996-002 Black nylon housing	
Lens Material	High impact and chemical resistant Grilamid® lens	
Compliance	ADR 45/01	



Rear view showing DT connector that allows application of self-adhesive heat shrink.



8JA 959 736-811  
Not included with lamp.

**DuraLED® Heavy Duty Cab Marker/ Supplementary Side Direction Indicator Lamp with DT Connector**

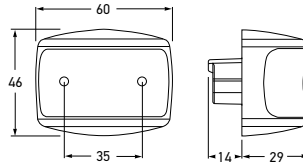
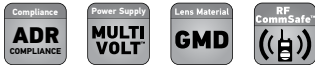
Heavy duty amber LED cab marker or supplementary side direction indicator lamp with DT connector and nylon housing. Featuring ultra durable Grilamid® nylon lens for extreme impact, UV, chemical and stress resistance. Optic appears clear until illuminated.



<b>2BP 980 990-101</b>	2076	
<b>2BP 980 990-107</b>	2076BULK	PACK OF 8
Mounting	Surface mount. Suitable for horizontal mounting.	
Voltage	Multivolt™ for optimum brightness in 12 and 24 volt systems.	
Power Consumption	<1W	
Protection	Reverse polarity protection. IP 6K7 (Protection against dust and temporary water immersion) IP 6K9K (Protection against dust and high pressure/steam jet cleaning)	
Spare Parts	8JA 959 736-811 2 pole DT plug, wedge and 2 contacts 8KB 958 757-501 2.0m sheathed cable with DT plug 9BG 980 996-002 Black nylon housing	
Lens Material	High impact and chemical resistant Grilamid® lens	
Compliance	ADR 6/00: Cat 5 ADR 45/01	



MARKER AND SIGNAL LAMPS



2PF 980 990-201	2074	
2PF 980 990-207	2074BULK	PACK OF 8
Mounting	Surface mount. Suitable for horizontal mounting.	
Voltage	Multivolt™ for optimum brightness in 12 and 24 volt systems.	
Power Consumption	<1W	
Protection	Reverse polarity protection. IP 6K7 (Protection against dust and temporary water immersion) IP 6K9K (Protection against dust and high pressure/steam jet cleaning)	
Spare Parts	8JA 959 736-811 2 pole DT plug, wedge and 2 contacts 8KB 958 757-501 2.0m sheathed cable with DT plug 9BG 980 996-002 Black nylon housing	
Lens Material	High impact and chemical resistant Grilamid® lens	
Compliance	ADR 49/00	

DuraLED® Heavy Duty Front Position/End Outline Lamp with DT Connector

Heavy duty white front position or end outline LED lamp with DT connector and nylon housing. Featuring ultra durable Grilamid® nylon lens for extreme impact, UV, chemical and stress resistance. Optic appears clear until illuminated.



2PF 980 990-401	2071	
2PF 980 990-407	2071BULK	PACK OF 8
Mounting	Surface mount. Suitable for horizontal mounting.	
Voltage	Multivolt™ for optimum brightness in 12 and 24 volt systems.	
Power Consumption	<1W	
Protection	Reverse polarity protection. IP 6K7 (Protection against dust and temporary water immersion) IP 6K9K (Protection against dust and high pressure/steam jet cleaning)	
Spare Parts	As per 2PF 980 990-201	
Lens Material	High impact and chemical resistant Grilamid® lens	
Compliance	ADR 49/00	

DuraLED® Heavy Duty Front End Outline Lamp with DT Connector

Heavy duty amber front end outline LED lamp for trailers with DT connector and nylon housing. Featuring ultra durable Grilamid® nylon lens for extreme impact, UV, chemical and stress resistance. Optic appears clear until illuminated.



2XA 980 990-601	2312	
2XA 980 990-607	2312BULK	PACK OF 8
Mounting	Surface mount. Suitable for horizontal mounting.	
Voltage	Multivolt™ for optimum brightness in 12 and 24 volt systems.	
Power Consumption	<1W	
Protection	Reverse polarity protection. IP 6K7 (Protection against dust and temporary water immersion) IP 6K9K (Protection against dust and high pressure/steam jet cleaning)	
Spare Parts	As per 2PF 980 990-201	
Lens Material	High impact and chemical resistant Grilamid® lens	
Compliance	ADR 49/00	

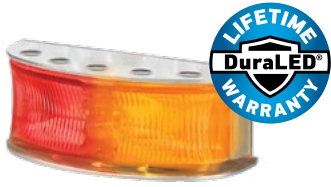
DuraLED® Heavy Duty Rear Position/End Outline Lamp with DT Connector

Heavy duty red rear position or end outline LED lamp with DT connector and nylon housing. Featuring ultra durable Grilamid® nylon lens for extreme impact, UV, chemical and stress resistance. Optic appears clear until illuminated.



**DuraLED® Heavy Duty Side Marker Lamp - Red/Amber**

Heavy duty red/amber LED side marker lamp with stainless steel housing. Featuring ultra durable Grilamid® nylon lens for extreme impact, UV, chemical and stress resistance. Optic appears clear until illuminated.

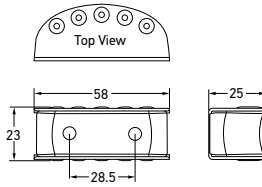


2PS 980 660-001

2PS 980 660-021



2PS 980 660-001



<b>2PS 980 660-001</b>	<b>2058</b>		<b>MATT FINISH</b>
<b>2XS 980 660-018</b>	<b>2058BULK (Pack of 4)</b>		
<b>2PS 980 660-021</b>	<b>2058P</b>		<b>POLISHED FINISH</b>
<b>2XS 980 660-038</b>	<b>2058PBULK (Pack of 4)</b>		
Mounting	Surface mount. Suitable for horizontal mounting.		
Voltage	Multivolt™ for optimum brightness in 12 and 24 volt systems.		
Power Consumption	<1W		
Protection	Reverse polarity protection. IP 6K7 (Protection against dust and temporary water immersion) IP 6K9K (Protection against dust and high pressure/steam jet cleaning)		
Cable Length	Pre-wired with 0.5m of sheathed multi-core cable. Bulk pack pre-wired with 2.5m of sheathed multi-core cable.		
Spare Parts	9BG 980 665-001	Stainless steel housing	
	9BG 980 665-101	Polished stainless steel housing	
Lens Material	High impact and chemical resistant Grilamid® lens		
Compliance	ADR 45/01		
The industrial polishing process utilised on the housings may not always be 100% blemish free.			

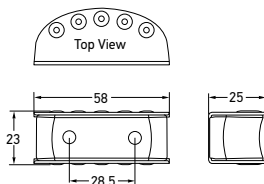
**DuraLED® Heavy Duty Cab Marker/ Supplementary Side Direction Indicator Lamp**

Heavy duty LED cab marker or supplementary side direction indicator lamp with stainless steel housing. Featuring ultra durable Grilamid® nylon lens for extreme impact, UV, chemical and stress resistance. Optic appears clear until illuminated.



<b>2BP 980 660-101</b>	<b>2027</b>		<b>MATT FINISH</b>
<b>2BP 980 660-118</b>	<b>2027BULK (Pack of 4)</b>		
<b>2BP 980 660-121</b>	<b>2027P</b>		<b>POLISHED FINISH</b>
<b>2BP 980 660-138</b>	<b>2027PBULK (Pack of 4)</b>		
Mounting	Surface mount. Suitable for horizontal mounting.		
Voltage	Multivolt™ for optimum brightness in 12 and 24 volt systems.		
Power Consumption	<1W		
Protection	Reverse polarity protection. IP 6K7 (Protection against dust and temporary water immersion) IP 6K9K (Protection against dust and high pressure/steam jet cleaning)		
Cable Length	Pre-wired with 0.5m of sheathed multi-core cable. Bulk pack pre-wired with 2.5m of sheathed multi-core cable.		
Spare Parts	9BG 980 665-001	Stainless steel housing	
	9BG 980 665-101	Polished stainless steel housing	
Lens Material	High impact and chemical resistant Grilamid® lens		
Compliance	ADR 6/00: Cat 5	ADR 45/01	
The industrial polishing process utilised on the housings may not always be 100% blemish free.			

MARKER AND SIGNAL LAMPS



2PF 980 660-201	2061		MATT FINISH
2PF 980 660-218	2061BULK (Pack of 4)		
2PF 980 660-221	2061P		POLISHED FINISH
2PF 980 660-238	2061PBULK (Pack of 4)		
Mounting	Surface mount. Suitable for horizontal mounting.		
Voltage	Multivolt™ for optimum brightness in 12 and 24 volt systems.		
Power Consumption	<1W		
Protection	Reverse polarity protection. IP 6K7 (Protection against dust and temporary water immersion) IP 6K9K (Protection against dust and high pressure/steam jet cleaning)		
Cable Length	Pre-wired with 0.5m of sheathed multi-core cable. Bulk pack pre-wired with 2.5m of sheathed multi-core cable.		
Spare Parts	9BG 980 665-001	Stainless steel housing	
	9BG 980 665-101	Polished stainless steel housing	
Lens Material	High impact and chemical resistant Grilamid® lens		
Compliance	ADR 49/00		

The industrial polishing process utilised on the housings may not always be 100% blemish free.

DuraLED® Heavy Duty Front Position/End Outline Lamp

Heavy duty white front position/end outline LED lamp with stainless steel housing. Featuring ultra durable Grilamid® nylon lens for extreme impact, UV, chemical and stress resistance. Optic appears clear until illuminated.



2PF 980 660-201



2PF 980 660-301	2062		MATT FINISH
2PF 980 660-318	2062BULK (Pack of 4)		
2PF 980 660-321	2062P		POLISHED FINISH
2PF 980 660-338	2062PBULK (Pack of 4)		

Other specifications as per 2PF 980 660-201.

DuraLED® Heavy Duty Front End Outline Lamp

Heavy duty amber front end outline LED lamp for trailers, with stainless steel housing. Featuring ultra durable Grilamid® nylon lens for extreme impact, UV, chemical and stress resistance. Optic appears clear until illuminated.



DuraLED® Heavy Duty Rear Position/End Outline Lamp

Heavy duty red rear position/end outline LED lamp with stainless steel housing. Featuring ultra durable Grilamid® nylon lens for extreme impact, UV, chemical and stress resistance. Optic appears clear until illuminated.



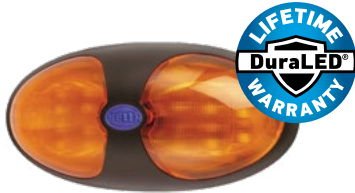
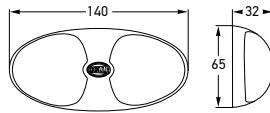
2XS 980 660-401	2311		MATT FINISH
2XS 980 660-417	2311BULK (Pack of 4)		
2XS 980 660-421	2311P		POLISHED FINISH
2XS 980 660-437	2311PBULK (Pack of 4)		

Other specifications as per 2PF 980 660-201.



### DuraLED® Supplementary Side Direction Indicator Lamp (Cat. 5)

LED supplementary side direction indicator featuring amber impact resistant polycarbonate lens and HELLA's Ultra Wide Visibility Optics for significantly improved side visibility. Projected luminous area of 51cm². See page 61 for function category details.



<b>2BM 959 700-011</b>	<b>2031</b>
Mounting	Surface mount with mounting bushes supplied. Suitable for horizontal mounting.
Voltage	Multivolt™ for optimum brightness in 12 and 24 volt systems.
Power Consumption	3W
Protection	Reverse polarity and 5000 watt Transient Voltage Suppressor (TVS) IP 6K7 (Protection against dust and temporary water immersion) IP 6K9K (Protection against dust and high-pressure/steam jet cleaning)
Cable Length	Pre-wired with 2.5m of sheathed multi-core cable.
Spare Part	8HG 959 028-011 Screw boss kit
Lens Material	Polycarbonate.
Compliance	ADR 6/00: Cat 5

### DuraLED® Side Marker Lamp with Clear Lens

LED side marker featuring clear impact resistant polycarbonate lens and HELLA's Ultra Wide Visibility Optics for significantly improved side visibility. Optic appears clear until illuminated.



<b>2PS 959 700-201</b>	<b>2033</b>
Mounting	Surface mount with mounting bushes supplied.
Voltage	Multivolt™ for optimum brightness in 12 and 24 volt systems.
Power Consumption	3W
Protection	Reverse polarity and 5000 watt Transient Voltage Suppressor (TVS) IP 6K7 (Protection against dust and temporary water immersion) IP 6K9K (Protection against dust and high-pressure/steam jet cleaning)
Cable Length	Pre-wired with 2.5m of sheathed multi-core cable.
Spare Part	8HG 959 028-011 Screw boss kit
Lens Material	Polycarbonate.
Compliance	ADR 45/01

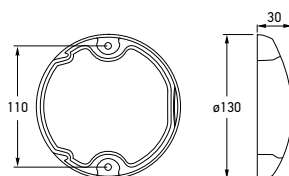
### DuraLED® Rear Position/End Outline Lamp

LED rear position/rear end outline lamp featuring red impact resistant polycarbonate lens and HELLA's Ultra Wide Visibility Optics for significantly improved side visibility.



<b>2BA 959 700-301</b>	<b>2309</b>
Mounting	Surface mount with mounting bushes supplied. Suitable for horizontal mounting.
Voltage	Multivolt™ for optimum brightness in 12 and 24 volt systems.
Power Consumption	3W
Protection	Reverse polarity and 5000 watt Transient Voltage Suppressor (TVS) IP 6K7 (Protection against dust and temporary water immersion) IP 6K9K (Protection against dust and high-pressure/steam jet cleaning)
Cable Length	Pre-wired with 2.5m of sheathed multi-core cable.
Spare Part	8HG 959 028-011 Screw boss kit
Lens Material	Polycarbonate.
Compliance	ADR 49/00

## MARKER AND SIGNAL LAMPS



2SB 959 821-001	2366	
2SB 959 821-007	2366BULK	PACK OF 12
Mounting	Surface mount with mounting bushes supplied.	
Voltage	Multivolt™ for optimum brightness at input voltages from 9 to 33 volts.	
Power Consumption	Stop: 2.5W Rear position: 0.5W	
Protection	Reverse polarity and 1500 watt Transient Voltage Suppressor (TVS) IP 6K6 (Protection against dust and high-pressure water jets) IP 6K7 (Protection against dust and temporary water immersion)	
Cable Length	Pre-wired with 2.5m of sheathed multi-core cable.	
Compliance	ADR 49/00	E4 10208 ECE R7/02

See page 65 for EuroLED® accessories.

## EuroLED® Stop/Rear Position Lamp

EuroLED® stop, rear position lamp with red lens. The use of precision optics enable a single high intensity LED to be used in a commercial vehicle lamp, resulting in low power consumption. Features HELLA Ultra Wide Visibility Optics for significantly improved side visibility.



2BA 959 822-001	2133	
2BA 959 822-007	2133BULK	PACK OF 12
2BA 959 822-641	2133CS	HCS TECHNOLOGY
Mounting	Surface mount with mounting bushes supplied.	
Voltage	Multivolt™ for optimum brightness at input voltages from 9 to 33 volts.	
Power Consumption	2.5W	
Protection	As per 2SB 959 821-001.	
Cable Length	Pre-wired with 2.5m of sheathed multi-core cable.	
Compliance	ADR 6/00: Cat 2a	E4 10208 ECE R6/01 ISO 13207-1 (2BA 959 822-641 only)

See page 16 for further information on HCS Technology and ISO 13207-1.

## EuroLED® Rear Direction Indicator Lamp

EuroLED® rear direction indicator lamp with amber lens and single LED. Features HELLA Ultra Wide Visibility Optics for significantly improved side visibility.

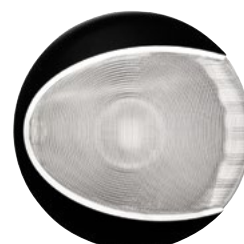


2ZR 959 820-001	1433	
2ZR 959 820-007	1433BULK	PACK OF 12
Mounting	Surface mount with mounting bushes supplied.	
Voltage	Multivolt™ for optimum brightness at input voltages from 9 to 33 volts.	
Power Consumption	2.5W	
Protection	As per 2SB 959 821-001.	
Cable Length	Pre-wired with 2.5m of sheathed multi-core cable.	
Compliance	ADR 1/00	E4 10208 ECE R23/00

Reversing lamps are not designed for continuous operation.

## EuroLED® Reversing Lamp

EuroLED® reversing lamp with clear lens and single LED.

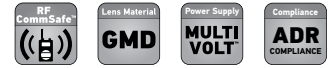
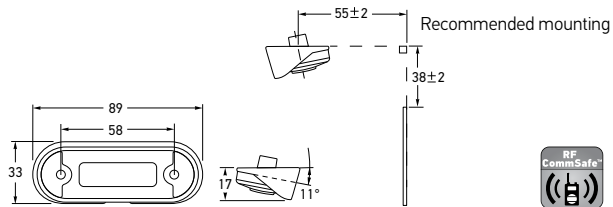


**DuraLED® Surface Mount Number Plate Insert**

White DuraLED® number plate insert featuring a low profile of only 17mm and an ultra durable Grilamid® nylon lens for extreme impact, UV, chemical and stress resistance. Two inserts per number plate are required for compliance. Can be mounted either above or beside the number plate. Optic appears clear until illuminated.

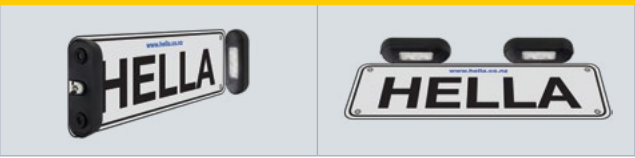


8HG 958 029-001

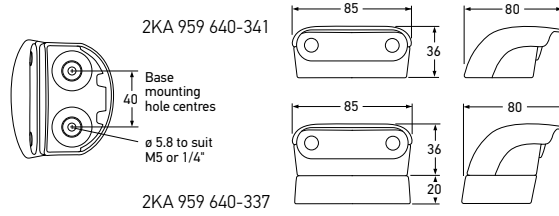


<b>2KA 980 869-001</b>	<b>2560</b>	
<b>2KA 980 869-027</b>	<b>2560BULK</b>	<b>PACK OF 16</b>
Mounting	Surface mount.	
Voltage	Multivolt™ for optimum brightness in 12 and 24 volt systems.	
Power Consumption	0.5W	
Protection	Reverse polarity protection. IP 6K7 (Protection against dust and temporary water immersion) IP 6K9K (Protection against dust and high pressure/steam jet cleaning)	
Cable Length	Pre-wired with 0.5m of multi-core cable. Bulk pack pre-wired with 2.5m of multi-core cable.	
Spare Parts	9HD 980 858-007 8HG 958 029-001	Black screw caps (Pack of 4) Angle mount bracket
Lens Material	High impact and chemical resistant Grilamid® lens	
Compliance	ADR 48/00	

**NUMBER PLATE LAMP POSITIONING**



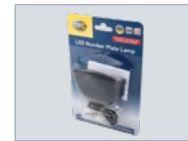
MARKER AND SIGNAL LAMPS



LED Number Plate Lamp

White LED number plate lamp. Bulk version includes 20mm mounting spacer. One lamp required for ADR compliance.

2KA 959 640-341	2559	
2KA 959 640-337	2559BULK	PACK OF 8
Mounting	Surface mount.	
Voltage	Multivolt™ for optimum brightness in 12 and 24 volt systems.	
Power Consumption	0.5W	
Protection	Reverse polarity protection. IP 6K6 (Protection against dust and high-pressure water jets) IP 6K7 (Protection against dust and temporary water immersion)	
Cable Length	Pre-wired with 0.5m of multi-core cable. Bulk pack pre-wired with 2.5m of multi-core cable.	
Spare Parts	2KA 959 640-131	LED insert
Compliance	ADR 48/00	ECE R4/00



2KA 959 640-341



# Six Function LED Rear Combination Lamp

LED Stop/Rear Position/Rear Direction Indicator/Reverse Lamp with Retro Reflector and Number Plate Option



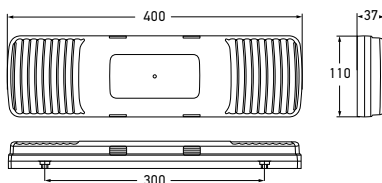
Combination Lamp with Attractive Retail Packaging

These stylish lamps combine form with function, incorporating stop, rear position, rear direction indicator and reverse lamps with a central reflector, and offers an optional number plate lamp function. To combine all rear marker and signal functions in a single lamp with a five core cable allows for a tangible reduction in installation time.

This lamp is protected by a lens made of specially formulated high impact acrylic, which is resistant to long-term harsh UV exposure and tolerant to chemicals commonly used in the transport industry. Our team designed this lamp to Hella's Fit and Forget standard, to withstand the most demanding environments.

All features of this six function rear combination lamp, including the latest ISO 13207-1 compliance, are designed to ensure lowest cost of ownership for the astute transport operator.

MARKER AND SIGNAL LAMPS



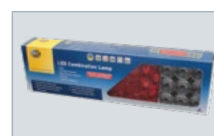
<b>2VP 980 980-001</b>	<b>2391</b>		<b>HCS TECHNOLOGY</b>
Mounting	Surface mount with mounting accessories supplied. Suitable for horizontal mounting.		
Voltage	Multivolt™ for optimum brightness in 12 and 24 volt systems.		
Power Consumption	Stop:	5W	
	Rear position:	<2W	
	Rear direction indicator:	6W	
	Reverse:	5W	
Protection	Reverse polarity and 5000 watt Transient Voltage Suppressor (TVS). IP 6K7 (Protection against dust and temporary water immersion) IP 6K9K (Protection against dust and high-pressure/steam jet cleaning)		
Cable Length	Pre-wired with 2.5m of sheathed multi-core cable.		
Spare Part	8HG 958 421-381	Mounting pack	
Compliance	ADR 1/00	ADR 6/00: Cat 2a	ADR 47/00 ADR 49/00 ISO 13207-1
See page 16 for further information on HCS Technology and ISO 13207-1.			

COMBINATION LAMP FUNCTIONS



LED Stop/Rear Position/Rear Direction Indicator/Reversing Lamp with Retro Reflector

LED combination lamp with 64cm² red retro reflector. Modern clear lens design with black mounting base. Features HCS Technology with ISO 13207-1 compliance. Shockproof and fully sealed to withstand water submersion and high-pressure washing. Direction indicator optic appears clear until illuminated.



2VP 980 980-001



<b>2VD 980 980-011</b>	<b>2392L</b>		<b>LEFT HAND SIDE</b>
<b>2VD 980 980-021</b>	<b>2392R</b>		<b>RIGHT HAND SIDE</b>
Mounting	Surface mount with mounting accessories supplied. Suitable for horizontal mounting.		
Voltage	Multivolt™ for optimum brightness in 12 and 24 volt systems.		
Power Consumption	Stop:	5W	
	Rear position/Number plate:	<2W	
	Rear direction indicator:	6W	
	Reverse:	5W	
Protection	Reverse polarity and 5000 watt Transient Voltage Suppressor (TVS). IP 6K7 (Protection against dust and temporary water immersion) IP 6K9K (Protection against dust and high-pressure/steam jet cleaning)		
Cable Length	Pre-wired with 2.5m of sheathed multi-core cable.		
Spare Part	8HG 958 421-381	Mounting pack	
Compliance	ADR 1/00	ADR 6/00: Cat 2a	ADR 47/00 ADR 48/00 ADR 49/00 ISO 13207-1
See page 16 for further information on HCS Technology and ISO 13207-1.			

COMBINATION LAMP FUNCTIONS



LED Stop/Rear Position/Rear Direction Indicator/Reversing Lamp with Retro Reflector and Number Plate Function

LED combination lamp with 64cm² red retro reflector and number plate function. Modern clear lens design with black mounting base. Features HCS Technology with ISO 13207-1 compliance. Shockproof and fully sealed to withstand water submersion and high-pressure washing. Direction indicator optic appears clear until illuminated.



2VD 980 980-011

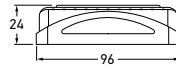
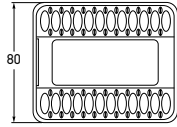
**LED Stop/Rear Position/  
Rear Direction Indicator Lamp**

LED stop, rear position and rear direction indicator lamp with 18cm<sup>2</sup> red retro reflector. Modern clear lens design with black mounting base. Low power consumption and long life equates to economical running costs. Convenient mounting base with multiple fixing points allow easy fitment to most trailers/vehicles. The lamp is fully sealed against dust and moisture ingress. Optic appears clear until illuminated.



8HG 980 727-002  
Mounting spacer (Not included with lamp)

2VA 980 720-071



<b>2VA 980 720-071</b>	2394	
<b>2VA 980 720-077</b>	2394BULK	PACK OF 18
<b>2VA 980 720-021</b>	23946M	
<b>2VA 980 720-027</b>	23946MBULK	PACK OF 10
Mounting	Surface mount with choice of mounting holes. Lamp clips into mounting base. Suitable for horizontal or vertical mounting.	
Voltage	Multivolt™ for optimum brightness in 12 and 24 volt systems.	
Power Consumption	Stop: 2W Rear position: 1W Rear direction indicator: 2W	
Protection	Reverse polarity and transient spike circuit protection. IP 6K7 (Protection against dust and temporary water immersion) IP 6K9K (Protection against dust and high-pressure/steam jet cleaning)	
Cable Length	2VA 980 720-071 Pre-wired with 0.5m of sheathed multi-core cable. 2VA 980 720-077 Pre-wired with 6m of sheathed multi-core cable.	
Spare Parts	8HG 980 726-001 Mounting base 8HG 980 727-002 Mounting spacer (Not included)	
Lens Material	High impact and chemical resistant Grilamid® lens	
Compliance	ADR 6/00: Cat 2a	ADR 47/00 ADR 49/00

**TRAILER LAMP FUNCTIONS**



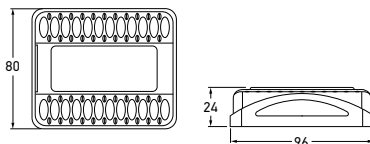
Stop

Rear direction indicator

Rear position



**MARKER AND SIGNAL LAMPS**



<b>2VB 980 720-561</b>	2395	
<b>2VB 980 720-567</b>	2395BULK	<b>PACK OF 18</b>
<b>2VB 980 720-511</b>	23956M	
<b>2VB 980 720-513</b>	23956MBULK	<b>PACK OF 10</b>
Mounting	Surface mount with choice of mounting holes. Lamp clips into mounting base. Suitable for horizontal or vertical mounting.	
Voltage	Multivolt™ for optimum brightness in 12 and 24 volt systems.	
Power Consumption	Stop: 2W Rear position/Number plate: 1W Rear direction indicator: 2W	
Protection	Reverse polarity and transient spike circuit protection. IP 6K7 (Protection against dust and temporary water immersion) IP 6K9K (Protection against dust and high-pressure/steam jet cleaning)	
Cable Length	2VB 980 720-561 Pre-wired with 0.5m of sheathed multi-core cable. 2VB 980 720-567 Pre-wired with 6m of sheathed multi-core cable.	
Spare Parts	8HG 980 726-001 Mounting base 8HG 980 727-002 Mounting spacer (Not included) 9GH 958 748-007 Number plate rubber mounting spacer (Not included)	
Lens Material	High impact and chemical resistant Grilamid® lens	
Compliance	ADR 6/00: Cat 2a    ADR 47/00    ADR 48/00    ADR 49/00	

**LED Stop/Rear Position/Rear Direction Indicator Lamp with Number Plate Function**

LED stop, rear position and rear direction indicator lamp with 18cm<sup>2</sup> red retro reflector and number plate function. Modern clear lens design with black mounting base. Low power consumption and long life equates to economical running costs. Convenient mounting base with multiple fixing points allow easy fitment to most trailers/vehicles. The lamp is fully sealed against dust and moisture ingress. Optic appears clear until illuminated.



8HG 980 727-002 Mounting spacer (Not included with lamp)

2VB 980 720-561



9GH 958 748-007 Number plate rubber mounting spacer (Not included with lamp)

**TRAILER LAMP FUNCTIONS**



Stop

Rear direction indicator

Rear position/Number plate

**LED Combination Lamp Trailer Kit**

LED trailer lamp incorporating a modern clear lens design with an 18cm<sup>2</sup> red retro reflector. The optic in the lamp appears clear until illuminated.

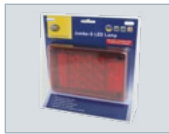


<b>2VB 980 720-801</b>	2395TP	
Lens Material	High impact and chemical resistant Grilamid® lens	
Kit Contents	Each trailer lamp kit contains: 1 x 2VA 980 720-071 Stop/rear position/rear direction indicator lamp with reflex reflector. 1 x 2VB 980 720-561 Stop/rear position/rear direction indicator/Number plate lamp function with reflex reflector. 8 x Connectors (8KW 980 302-132) Crimp connectors with heat shrink insulation.	

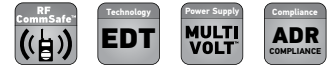
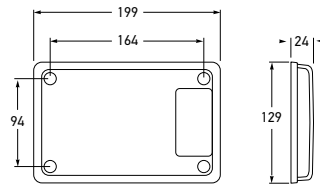


### Jumbo-S LED Stop/ Rear Position Lamp

Jumbo-S LED stop, rear position lamp with inbuilt 23cm<sup>2</sup> red retro reflector, featuring Enhanced Definition Technology (EDT) for the stop signal function. New low profile design allows surface mounting complete with mounting gaskets and screws.



2TA 980 760-032



<b>2TA 980 760-031</b>	<b>2361</b>	
<b>2TA 980 760-032</b>	<b>2361BL</b>	<b>BLISTER PACK</b>
Mounting	Surface mount with mounting bolts supplied. Suitable for horizontal or vertical mounting.	
Voltage	Multivolt™ for optimum brightness in 12 and 24 volt systems.	
Power Consumption	Stop: 5W Rear position: 1W	
Protection	Reverse polarity and 5000 watt Transient Voltage Suppressor (TVS) IP 6K7 (Protection against dust and temporary water immersion) IP 6K9K (Protection against dust and high-pressure/steam jet cleaning)	
Cable Length	Pre-wired with 200mm of cable.	
Compliance	ADR 47/00      ADR 49/00	

See page 66 for Jumbo-S accessories.

### Jumbo-S LED Rear Direction Indicator Lamp

Jumbo-S LED rear direction indicator lamp with inbuilt 23cm<sup>2</sup> red retro reflector. New low profile design allows surface mounting complete with mounting gaskets and screws. Features HCS Technology with ISO 13207-1 compliance.



2BR 980 761-052



<b>2BR 980 761-051</b>	<b>2161</b>	
<b>2BR 980 761-052</b>	<b>2161BL</b>	<b>BLISTER PACK</b>
<b>2BR 980 761-061</b>	<b>2161CS</b>	<b>HCS TECHNOLOGY</b>
Mounting	Surface mount with mounting bolts supplied. Suitable for horizontal or vertical mounting.	
Voltage	Multivolt™ for optimum brightness in 12 and 24 volt systems.	
Power Consumption	4W	
Protection	As per 2SB 980 760-031	
Cable Length	Pre-wired with 200mm of cable.	
Compliance	ADR 6/00: Cat 2a      ADR 47/00      ISO 13207-1 (2BR 980 761-061 only)	

See page 16 for further information on HCS Technology and ISO 13207-1.

### Jumbo-S LED Reversing Lamp

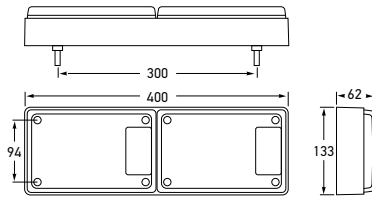
Jumbo-S LED reversing lamp with inbuilt 23cm<sup>2</sup> red retro reflector. New low profile design allows surface mounting complete with mounting gaskets and screws.



<b>2ZR 980 762-031</b>	<b>1461</b>	
Mounting	Surface mount with mounting bolts supplied. Suitable for horizontal or vertical mounting.	
Voltage	Multivolt™ for optimum brightness in 12 and 24 volt systems.	
Power Consumption	4W	
Protection	Reverse polarity and transient spike circuit protection. IP 6K7 (Protection against dust and temporary water immersion) IP 6K9K (Protection against dust and high-pressure/steam jet cleaning)	
Cable Length	Pre-wired with 200mm of cable.	
Compliance	ADR 1/00      ADR 47/00	

Reversing lamps are not designed for continuous operation.

MARKER AND SIGNAL LAMPS

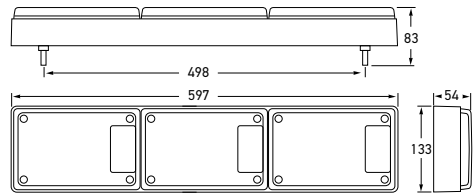


<b>2VA 980 761-801</b>	<b>2429CS</b>	<b>HCS TECHNOLOGY</b>
Mounting	Surface mount with mounting bolts supplied. Suitable for horizontal or vertical mounting.	
Voltage	Multivolt™ for optimum brightness in 12 and 24 volt systems.	
Power Consumption	Stop:	5W
	Rear position:	1W
	Rear direction indicator:	4W
Protection	Reverse polarity and 5000 watt Transient Voltage Suppressor (TVS) IP 6K7 (Protection against dust and temporary water immersion) IP 6K9K (Protection against dust and high-pressure/steam jet cleaning)	
Cable Length	Pre-wired with 2m of sheathed multi-core cable.	
Compliance	ADR 6/00: Cat 2a ADR 47/00 ADR 49/00 ISO 13207-1	

See page 66 for Jumbo-S and Designline accessories.

**Jumbo-S LED Double Module Stop/Rear Position/Rear Direction Indicator Lamp**

Jumbo-S LED stop, rear position, rear direction indicator lamp with 23cm<sup>2</sup> red retro reflectors. Lamps are pre-assembled and wired into housing for easy installation. Features HCS Technology with ISO 13207-1 compliance. (See page 16 for further information on HCS Technology and ISO 13207-1).



<b>2VA 980 761-811</b>	<b>2430CS</b>	<b>HCS TECHNOLOGY</b>
Mounting	As per 2VA 980 761-801	
Voltage	Multivolt™ for optimum brightness in 12 and 24 volt systems.	
Power Consumption	Stop:	5W x 2
	Rear position:	1W x 2
	Rear direction indicator:	4W
Protection	As per 2VA 980 761-801.	
Cable Length	Pre-wired with 2m of sheathed multi-core cable.	
Compliance	ADR 6/00: Cat 2a ADR 47/00 ADR 49/00 ISO 13207-1	

**Jumbo-S LED Triple Module Stop/Rear Position/Rear Direction Indicator Lamp**

Jumbo-S LED stop, rear position, rear direction indicator lamp with 23cm<sup>2</sup> red retro reflectors. Lamps are pre-assembled and wired into housing for easy installation. Features HCS Technology with ISO 13207-1 compliance. (See page 16 for further information on HCS Technology and ISO 13207-1).



<b>2VP 980 761-821</b>	<b>2431CS</b>	<b>HCS TECHNOLOGY</b>
Mounting	As per 2VA 980 761-801.	
Voltage	Multivolt™ for optimum brightness in 12 and 24 volt systems.	
Power Consumption	Stop	5W
	Rear position:	1W
	Rear direction indicator:	4W
	Reversing:	4W
Protection	As per 2VA 980 761-801.	
Cable Length	Pre-wired with 2m of sheathed multi-core cable.	
Compliance	ADR 1/00 ADR 6/00: Cat 2a ADR 47/00 ADR 49/00 ISO 13207-1	

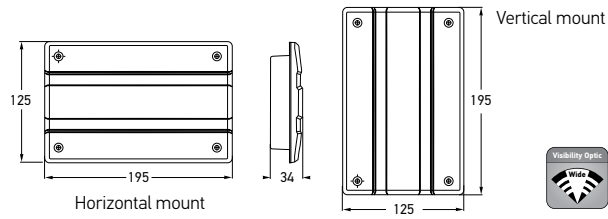
**Jumbo-S LED Triple Module Stop/Rear Position/Rear Direction Indicator/Reversing Lamp**

Jumbo-S LED stop, rear position, rear direction indicator and reversing lamp with 23cm<sup>2</sup> red retro reflectors. Lamps are pre-assembled and wired into housing for easy installation. Features HCS Technology with ISO 13207-1 compliance. (See page 16 for further information on HCS Technology and ISO 13207-1).



### Designline LED Module Stop/Rear Position Lamp

Designline LED Multivolt™ module designed to update existing bulb type Jumbo or Designline lamps. Features HELLA Ultra Wide Visibility Optics for significantly improved side visibility.

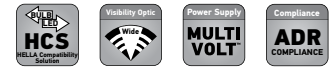


<b>2SB 959 040-501</b>	<b>2332H24</b>	<b>HORIZONTAL</b>
<b>2SB 959 040-701</b>	<b>2332V24</b>	<b>VERTICAL</b>
Mounting	Recess mount.	
Voltage	Multivolt™ for optimum brightness at input voltages from 9 to 33 volts.	
Power Consumption	Stop: 6W Rear position: 2W	
Protection	Reverse polarity and 5000 watt Transient Voltage Suppressor (TVS).	
Cable Length	Pre-wired with 200mm of cable.	
Compliance	ADR 49/00	

See page 66 for Designline accessories.

### Designline LED Module Rear Direction Indicator Lamp

Designline LED Multivolt™ module designed to update existing bulb type Jumbo or Designline lamps. Features HELLA Ultra Wide Visibility Optics for significantly improved side visibility.



<b>2BA 959 041-501</b>	<b>2146H24</b>	<b>HORIZONTAL</b>
<b>2BA 959 041-701</b>	<b>2146V24</b>	<b>VERTICAL</b>
<b>2BA 959 041-511</b>	<b>2146HCS (Incorporates HCS Technology)</b>	<b>HORIZONTAL</b>
Mounting	Recess mount.	
Voltage	Multivolt™ for optimum brightness at input voltages from 9 to 33 volts.	
Power Consumption	2BA 959 041-501/2BA 959 041-701: 6W 2BA 959 041-511: 5W	
Protection	Reverse polarity and 5000 watt Transient Voltage Suppressor (TVS).	
Cable Length	Pre-wired with 200mm of cable.	
Compliance	ADR 6/00: Cat 2a      ISO 13207-1 (2BA 959 041-511 only)	

See page 16 for further information on HCS Technology and ISO 13207-1.

### Designline LED Module Reversing Lamp

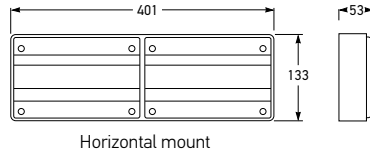
Designline LED Multivolt™ module designed to update existing Designline lamps. The high performance module features 36 High Efficacy LEDs that more than triples the raw lumen output over the standard module. High precision optics ensure ADR compliance by focusing the majority of light down ensuring wide illumination and improved safety when reversing.



<b>2ZR 959 041-321</b>	<b>1446H</b>	<b>HORIZONTAL</b>
Mounting	Recess mount.	
Voltage	Multivolt™ for optimum brightness at input voltages from 9 to 33 volts.	
Power Consumption	4W	
Protection	Reverse polarity and 5000 watt Transient Voltage Suppressor (TVS).	
Cable Length	Pre-wired with 200mm of cable.	
Compliance	ADR 1/00	

Reversing lamps are not designed for continuous operation.

MARKER AND SIGNAL LAMPS



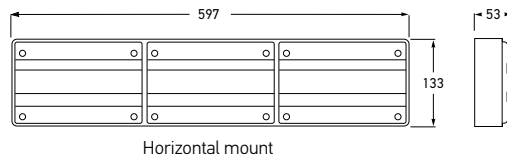
Horizontal mount

<b>2SD 959 040-801</b>	<b>2426H</b>	<b>HORIZONTAL</b>
Mounting	Surface mount.	
Voltage	Multivolt™ for optimum brightness at input voltages from 9 to 33 volts.	
Power Consumption	Stop: 6W	
	Rear position: 2W	
	Rear direction indicator: 6W	
Cable Length	Pre-wired with 2m of multi-core cable.	
Spare Part	9BG 958 559-011	Double housing
Compliance	ADR 6/00: Cat 2a	ADR 49/00

See page 66 for Designline accessories.

**Designline LED Double Module Stop/Rear Position/Rear Direction Indicator Lamp**

Double Designline LED module pre-assembled and wired for easy installation. Features a 2m wiring loom and encapsulated bolts so lamp does not have to be disassembled to mount. Features HELLA Ultra Wide Visibility Optics for significantly improved side visibility.



Horizontal mount

<b>2SD 959 040-811</b>	<b>2427H</b>	<b>HORIZONTAL</b>
Mounting	Surface mount.	
Voltage	Multivolt™ for optimum brightness at input voltages from 9 to 33 volts.	
Power Consumption	Stop: 6W x2	
	Rear position: 2W x2	
	Rear direction indicator: 6W	
Cable Length	Pre-wired with 2m of multi-core cable.	
Spare Part	9BG 958 615-011	Triple housing
Compliance	ADR 6/00: Cat 2a	ADR 49/00

**Designline LED Triple Module Stop/Rear Position/Rear Direction Indicator Lamp**

Triple Designline LED module pre-assembled and wired for easy installation. Features a 2m wiring loom and encapsulated bolts so lamp does not have to be disassembled to mount. Features HELLA Ultra Wide Visibility Optics for significantly improved side visibility.



<b>2SK 959 041-811</b>	<b>2428H</b>	<b>HORIZONTAL</b>
Mounting	Surface mount.	
Voltage	Multivolt™ for optimum brightness at input voltages from 9 to 33 volts.	
Power Consumption	Stop: 6W	
	Rear position: 2W	
	Rear direction indicator: 6W	
	Reverse: 4W	
Cable Length	Pre-wired with 2m of multi-core cable.	
Spare Part	9BG 958 615-011	Triple housing
Compliance	ADR 1/00	ADR 6/00: Cat 2a ADR 49/00

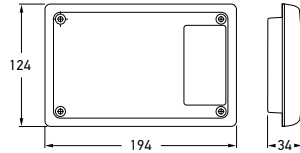
Reversing lamps are not designed for continuous operation.

**Designline LED Triple Module Stop/Rear Position/Rear Direction Indicator/Reversing Lamp**



**Jumbo LED Module Stop/  
Rear Position Lamp with Red  
Retro Reflector**

Jumbo LED Multivolt™ module designed to update existing Jumbo or Designline lamps with Enhanced Definition Technology (EDT). Reflector area 33cm<sup>2</sup>.



<b>2TA 959 030-101</b>	<b>2317</b>
Mounting	Recess mount. Suitable for horizontal or vertical mounting.
Voltage	Multivolt™ for optimum brightness at input voltages from 9 to 33 volts.
Power Consumption	Stop: 6W Rear position: 2W
Protection	Reverse polarity and 5000 watt Transient Voltage Suppressor (TVS).
Cable Length	Pre-wired with 200mm of cable.
Compliance	ADR 47/00      ADR 49/00

See page 66 for Jumbo accessories.

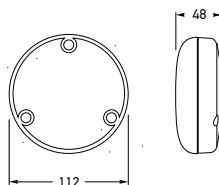
**Jumbo LED Module Rear  
Direction Indicator Lamp with  
Red Retro Reflector**

Jumbo LED Multivolt™ module designed to update existing Jumbo or Designline lamps. Reflector area 33cm<sup>2</sup>.



<b>2BR 959 031-001</b>	<b>2138</b>
Mounting	Recess mount. Suitable for horizontal or vertical mounting.
Voltage	Multivolt™ for optimum brightness at input voltages from 9 to 33 volts.
Power Consumption	9W
Protection	Reverse polarity and 5000 watt Transient Voltage Suppressor (TVS).
Cable Length	Pre-wired with 200mm of cable.
Compliance	ADR 6/00: Cat 2a      ADR 47/00

See page 66 for Jumbo accessories.



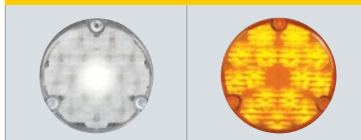
**110mm Round LED Front Direction Indicator Lamp - Amber Lens**

LED front direction indicator specifically designed for trucks, buses and motor homes.



<b>2BA 959 932-311</b>	<b>2135LED</b>	<b>BLACK BASE</b>
Mounting	Surface mount only with lens engraving "TOP" located correctly.	
Voltage	Multivolt™ for optimum brightness at input voltages from 9 to 33 volts.	
Power Consumption	4W	
Protection	Reverse polarity and 1500 watt Transient Voltage Suppressor (TVS) IP 6K6 (Protection against dust and high-pressure water jets) IP 6K7 (Protection against dust and temporary water immersion)	
Cable Length	Pre-wired with 200mm of cable.	
Compliance	ADR 6/00: Cat 1	

**LAMP FUNCTIONS**



Front position

Direction indicator

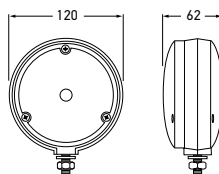
**110mm Round LED Front Position/ Front Direction Indicator Lamp - Clear Lens**

LED front direction indicator and front position lamp specifically designed for commercial transport, buses, caravans and trailers. Direction indicator optic appears clear until illuminated.



<b>2BE 959 932-152</b>	<b>2131CS</b>	<b>HCS TECHNOLOGY</b>
Mounting	Surface mount only with lens engraving "TOP" located correctly.	
Voltage	Multivolt™ for optimum brightness at input voltages from 9 to 33 volts.	
Power Consumption	Front position: <1W	Front direction indicator: 3W
Protection	Reverse polarity and 5000 watt Transient Voltage Suppressor (TVS). IP 6K7 (Protection against dust and temporary water immersion) IP 6K9K (Protection against dust and high-pressure/steam jet cleaning)	
Cable Length	Pre-wired with 200mm of cable.	
Compliance	ADR 6/00: Cat 1 ECE R7/02	ADR 49/00 E24 5851 ECE R6/01 ISO 13207-1

See page 16 for further information on HCS Technology and ISO 13207-1. Diagram as per 2BA 959 932-311



**LED Front Direction Indicator Lamp**

Single-sided LED front direction indicator fitted with high-intensity LED insert and black housing. Fully sealed to withstand high-pressure washing.



<b>2BA 959 932-301</b>	<b>2128LED</b>	<b>AMBER LENS</b>
Mounting	Single bolt mount.	
Voltage	Multivolt™ for optimum brightness at input voltages from 9 to 33 volts.	
Power Consumption	4W	
Protection	As per 2BA 959 932-311	
Cable Length	Pre-wired with 200mm of cable.	
Compliance	ADR 6/00: Cat 1	

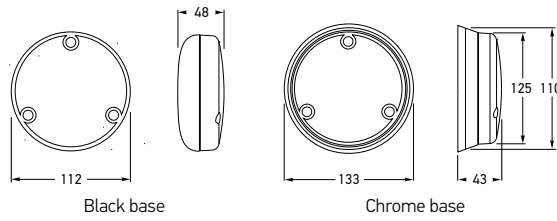
See page 61 for function category details.

**110mm Round LED Stop/  
Rear Position Lamp**

110mm round LED stop, rear position lamp specifically designed for commercial transport, buses, caravans and trailers. Features low power consumption and impact resistant acrylic lens.



2SB 959 931-111



<b>2SB 959 931-121</b>	<b>2359</b>	<b>CHROME BASE</b>
<b>2SB 959 931-111</b>	<b>2367</b>	<b>BLACK BASE</b>
Mounting	Surface mount only with lens engraving "TOP" located correctly.	
Voltage	Multivolt™ for optimum brightness at input voltages from 9 to 33 volts.	
Power Consumption	Stop: 3W Rear position: 1W	
Protection	Reverse polarity and 1500 watt Transient Voltage Suppressor (TVS) IP 6K6 (Protection against dust and high-pressure water jets) IP 6K7 (Protection against dust and temporary water immersion)	
Cable Length	Pre-wired with 200mm of cable.	
Compliance	ADR 49/00	

**110mm Round LED Rear Direction  
Indicator Lamp**



2BA 959 932-711



<b>2BA 959 932-272</b>	<b>2159</b>	<b>CHROME BASE</b>
<b>2BA 959 932-711</b>	<b>2167</b>	<b>BLACK BASE</b>
Mounting	Surface mount only with lens engraving "TOP" located correctly.	
Voltage	Multivolt™ for optimum brightness at input voltages from 9 to 33 volts.	
Power Consumption	3W	
Protection	As per 2SB 959 931-121	
Cable Length	Pre-wired with 200mm of cable.	
Compliance	ADR 6/00: Cat 2a	

See page 16 for further information on HCS Technology and ISO 13207-1.

**110mm Round LED Reversing Lamp**



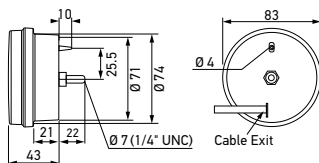
2ZR 959 930-111



<b>2ZR 959 930-121</b>	<b>1459</b>	<b>CHROME BASE</b>
<b>2ZR 959 930-111</b>	<b>1467</b>	<b>BLACK BASE</b>
Mounting	Surface mount only with lens engraving "TOP" located correctly.	
Voltage	Multivolt™ for optimum brightness at input voltages from 9 to 33 volts.	
Power Consumption	5W	
Protection	As per 2SB 959 931-121	
Cable Length	Pre-wired with 200mm of cable.	
Compliance	ADR 1/00	

Reversing lamps are not designed for continuous operation.

MARKER AND SIGNAL LAMPS



2BE 980 687-111	2108GMD	12 VOLT
2BE 980 686-011	2108GMD24V	24 VOLT
Mounting	Surface mount. Single bolt 1/4" stainless UNC thread. Nut and washer supplied.	
Power Consumption	2BE 980 687-111	2BE 980 686-011
	Safety DayLights™: 5W	5W
	Front position: 1W	1W
	Front indicator: 4W	5W
Protection	Reverse polarity and transient spike circuit protection. IP 6K7 (Protection against dust and temporary water immersion) IP 6K9K (Protection against dust and high-pressure/steam jet cleaning)	
Cable Length	Pre-wired with 2.5m of sheathed multi-core cable.	
Lens Material	High impact and chemical resistant Grilamid® lens	
Compliance	E24 5921    ECE R6/02    ECE R7/03    ECE R87/01	

See page 66 for mounting accessories.

83mm Round LED Safety DayLights™/Front Position/ Front Direction Indicator Lamp

This LED combination lamp features an integrated Safety DayLights™, front position and front direction indicator function. The lamp features a traditional round lens that illuminates with a distinctive ring of white LEDs when used as a Safety DayLight™. This lamp eliminates the need for installation of multiple lamps. Front position lamp and front direction indicator will extinguish the Safety DayLight™ automatically.



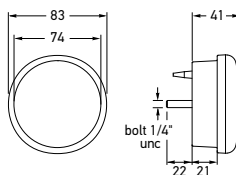
83MM LAMP FUNCTIONS



LED Safety DayLights™    Front position    Front direction indicator

83mm Round LED Front Direction Indicator Lamp

Compact, low profile LED front direction indicator fitted with amber polycarbonate lens. Fully sealed to withstand high-pressure washing.



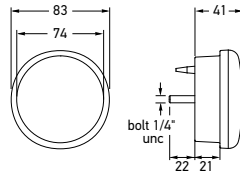
2BA 959 011-121	2107
Mounting	Surface mount. Single bolt 1/4" stainless UNC thread. Nut and washer supplied.
Voltage	Multivolt™ for optimum brightness at input voltages from 9 to 33 volts.
Power Consumption	4W
Protection	Reverse polarity and 5000 watt Transient Voltage Suppressor (TVS) IP 6K7 (Protection against dust and temporary water immersion) IP 6K9K (Protection against dust and high-pressure/steam jet cleaning)
Cable Length	Pre-wired with 2.5m of sheathed multi-core cable.
Compliance	ADR 6/00: Cat 1





### 83mm Round LED Stop/Rear Position Lamp

83mm diameter LED stop, rear position lamp with single bolt mount, featuring Enhanced Definition Technology (EDT). Features HELLA Ultra Wide Visibility Optics for significantly improved side visibility.



2SB 959 010-032  
Rear position

2SB 959 010-041

<b>2SB 959 010-032</b>	2390		
<b>2SB 959 010-041</b>	2390BL		BLISTER PACK
<b>2SB 959 010-037</b>	2390BULK		PACK OF 10
Mounting	Surface mount. Single bolt 1/4" stainless UNC thread. Nut and washer supplied.		
Voltage	Multivolt™ for optimum brightness at input voltages from 9 to 33 volts.		
Power Consumption	Stop: 3W	Rear position: 1W	
Protection	Reverse polarity and 5000 watt Transient Voltage Suppressor (TVS) IP 6K7 (Protection against dust and temporary water immersion) IP 6K9K (Protection against dust and high-pressure/steam jet cleaning)		
Cable Length	Pre-wired with 2.5m of sheathed multi-core cable.		
Compliance	ADR 49/00	E4 11391	ECE R7/02

See page 66 for mounting accessories.

### 83mm Round LED Rear Direction Indicator Lamp

83mm diameter LED rear direction indicator lamp with single bolt mount. Features HELLA Ultra Wide Visibility Optics for significantly improved side visibility.



2BA 959 011-031

<b>2BA 959 011-013</b>	2130		
<b>2BA 959 011-031</b>	2130BL		BLISTER PACK
<b>2BA 959 011-003</b>	2130BULK		PACK OF 10
Mounting	Surface mount. Single bolt 1/4" stainless UNC thread. Nut and washer supplied.		
Voltage	Multivolt™ for optimum brightness at input voltages from 9 to 33 volts.		
Power Consumption	2W		
Protection	As per 2SB 959 010-032		
Cable Length	Pre-wired with 2.5m of sheathed multi-core cable.		
Compliance	ADR 6/00: Cat 2a	E4 11391	ECE R6/01

Contact HELLA for 24 volt HCS version.

### 83mm Round LED Reversing Lamp

83mm diameter LED reversing lamp with single bolt mount.

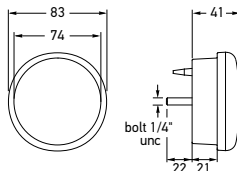


2ZR 959 010-521

<b>2ZR 959 010-512</b>	1490		
<b>2ZR 959 010-521</b>	1490BL		BLISTER PACK
<b>2ZR 959 010-517</b>	1490BULK		PACK OF 10
Mounting	Surface Mount. Single bolt 1/4" stainless UNC thread. Nut and washer supplied.		
Voltage	Multivolt™ for optimum brightness at input voltages from 9 to 33 volts.		
Power Consumption	4W		
Protection	As per 2SB 959 010-032		
Cable Length	Pre-wired with 2.5m of sheathed multi-core cable.		
Compliance	ADR 1/00	E4 11391	ECE R23/00

Reversing lamps are not designed for continuous operation.

MARKER AND SIGNAL LAMPS



83mm Round LED Stop/  
Rear Position/Rear Direction  
Indicator Lamp

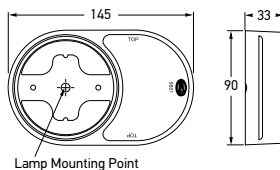
83mm diameter LED stop, rear position and rear direction indicator lamp with single bolt mount.

2SD 959 010-203	2399	
2SD 959 010-231	2399BL	BLISTER PACK
2SD 959 010-217	2399BULK	PACK OF 10
Mounting	Surface mount. Single bolt 1/4" stainless UNC thread. Nut and washer supplied.	
Voltage	Multivolt™ for optimum brightness in 12 and 24 volt systems.	
Power Consumption	Stop: 3W Rear position: 1W Rear direction indicator: 3W	
Protection	Reverse polarity and 5000 watt Transient Voltage Suppressor (TVS) IP 6K7 (Protection against dust and temporary water immersion) IP 6K9K (Protection against dust and high-pressure/steam jet cleaning)	
Cable Length	Pre-wired with 2.5m of sheathed multi-core cable. Bulk pack pre-wired with 6m of sheathed multi-core cable.	
Compliance	ADR 6/00: Cat 2a E 1538	ADR 49/00 ECE R6/01 ECE R7/02



2SD 959 010-231

Contact HELLA for 24 volt HCS version. See page 66 for mounting accessories.



Red Retro Reflector Base

Red retro reflector to suit 83mm round lamps.  
Reflector area 31.7cm<sup>2</sup>.

8RA 980 565-102	2934H	HORIZONTAL
Mounting	Utilises bolt mount from 83mm round lamps.	
Compliance	ADR 47/00	



2VB 959 010-801	2399TP	
Kit Contents	Each trailer lamp kit contains:	
	2 x 2SD 959 010-203	Combination stop/rear position and rear direction indicator lamp with 6m cable
	2 x 8RA 980 565-102	Red retro reflector base – horizontal mount
	1 x 2KA 959 640-341	LED number plate lamp
	1 x 8JA 910 032-001	7 pole flat plug

LED Lighting Trailer  
Conversion Kit

A complete Fit and Forget solution for small trailers.

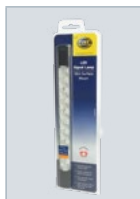


**LED Front Direction Indicator Lamp - Surface Mount**

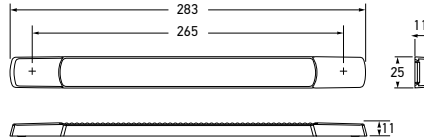
Surface mount LED front direction indicator lamp that is designed with an ultra wide visibility optic for significantly improved side visibility. Featuring a low profile, ultra durable Grilamid® nylon lens for extreme impact, UV, chemical and stress resistance. Optic appears clear until illuminated.



Ultra slim height of only 11mm. Lamp shown active.



2BA 980 888-322



HORIZONTAL MOUNT	
2BA 980 888-301	2109
2BA 980 888-322	2109BL (Blister Pack)
2BA 980 888-401	210924V
VERTICAL MOUNT	
2BA 980 888-501	2109V
2BA 980 888-601	2109V24V
Mounting	Suitable for horizontal and vertical mounting with tolerance. See diagrams.
Power Consumption	3W
Protection	Reverse polarity protection. IP 6K7 (Protection against dust and temporary water immersion) IP 6K9K (Protection against dust and high-pressure/steam jet cleaning)
Cable Length	Pre-wired with 2.5m of sheathed multi-core cable. (Blister packs with 0.5m cable)
Lens Material	High impact and chemical resistant Grilamid® lens
Spare Parts	9HD 980 885-007 White screw caps (Pack of 4) 9HD 980 885-017 Charcoal screw caps (Pack of 4) 9HD 980 885-107 Chrome plated screw caps (Pack of 4)
Compliance	ADR 6/00: Cat 1 Horizontal (E24) 5869 Vertical (E24) 5890 ECE R6/01

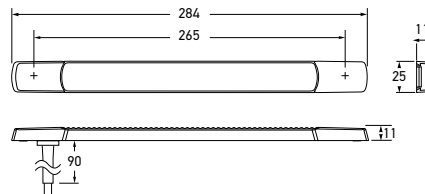
See page 64 for surface mount strip lamp screw caps.

**LED Slim Combination Lamp - Surface Mount**

Slim surface mount strip lamp available as a combination front direction indicator and position light making it one of the most compact certified front direction/front position lamps available. Featuring a low profile, ultra durable Grilamid® nylon lens for extreme impact, UV, chemical and stress resistance. Optic appears clear until illuminated.



Ultra slim height of only 11mm.



2BE 980 819-301	211012V	12 VOLT
2BE 980 819-401	211024V	24 VOLT
Mounting	Suitable for horizontal or vertical mounting with tolerance.	
Power Consumption	Front position: <1W Front direction indicator: 3W	
Protection	Reverse polarity protection. IP 6K7 (Protection against dust and temporary water immersion) IP 6K9K (Protection against dust and high-pressure/steam jet cleaning)	
Cable Length	Pre-wired with 3m of sheathed multi-core cable.	
Lens Material	High impact and chemical resistant Grilamid® lens	
Spare Parts	9HD 980 885-007 White screw caps (Pack of 4) 9HD 980 885-017 Charcoal screw caps (Pack of 4) 9HD 980 885-107 Chrome plated screw caps (Pack of 4)	
Compliance	ADR 49/00: Cat S3	ADR 6/00: Cat 1

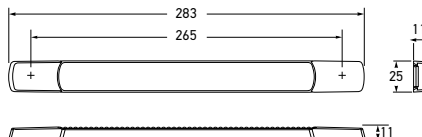
**COMBINATION LAMP FUNCTIONS**



Front position

Front direction indicator

MARKER AND SIGNAL LAMPS



2DA 980 887-301	5245	12 VOLT
2DA 980 887-401	524524V	24 VOLT
Mounting	Suitable for horizontal or vertical mounting with tolerance. See diagrams.	
Power Consumption	3W	
Protection	Reverse polarity protection. IP 6K7 (Protection against dust and temporary water immersion) IP 6K9K (Protection against dust and high-pressure/steam jet cleaning)	
Cable Length	Pre-wired with 2.5m of sheathed multi-core cable.	
Lens Material	High impact and chemical resistant Grilamid® lens	
Spare Parts	9HD 980 885-007 White screw caps (Pack of 4) 9HD 980 885-017 Charcoal screw caps (Pack of 4) 9HD 980 885-107 Chrome plated screw caps (Pack of 4)	
Compliance	ADR 49/00: Cat S3	E24 02 0087 ECE R7/02

LED High Level Brake Lamp - Surface Mount

Surface mount LED high level brake lamp that is designed with an ultra wide visibility optic to suit a wide range of mounting positions and angles. Featuring a low profile, ultra durable Grilamid® nylon lens for extreme impact, UV, chemical and stress resistance. Optic appears clear until illuminated.



Ultra slim height of only 11mm. Lamp shown active.



HORIZONTAL MOUNT		
2ZR 980 889-001	1468	12 VOLT
2ZR 980 889-022	1468BL (Blister Pack)	
2ZR 980 889-201	146824V	24 VOLT
2ZR 980 889-222	146824VBL (Blister Pack)	
VERTICAL MOUNT		
2ZR 980 889-101	1468V	12 VOLT
Cable Length	Pre-wired with 2.5m of sheathed multi-core cable. (Blister packs with 0.5m cable)	
Compliance	Horizontal E24 0027	Vertical E24 0028 ECE R23/00

LED Reversing Lamp - Surface Mount

Surface mount LED reversing lamp. Featuring a low profile, ultra durable Grilamid® nylon lens for extreme impact, UV, chemical and stress resistance. Optic appears clear until illuminated.



Ultra slim height of only 11mm. Lamp shown active.

MOUNTING DIAGRAMS

2DA 980 887-301, 2DA 980 887-401	2DA 980 887-301, 2DA 980 887-401	2ZR 980 889-001, 2ZR 980 889-022, 2ZR 980 889-201, 2ZR 980 889-222	2ZR 980 889-101
Horizontal mount: +/- 15° tilt (up/down)	Vertical mount: +/- 12° tilt (up/down)	Horizontal mount: +/- 10° rotation around lamp (and vehicle) axis	Vertical mount: +/- 15° rotation around lamp (and vehicle) axis



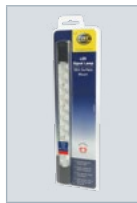
ZZR 980 889-022

**LED Stop/Rear Position Lamp - Surface Mount**

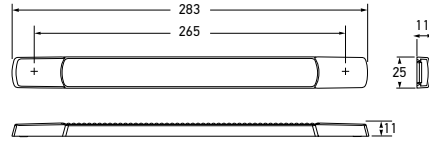
Surface mount LED stop/rear position lamp that features Enhanced Definition Technology (EDT) and is designed with an ultra wide visibility optic for significantly improved side visibility. Featuring a low profile, ultra durable Grilamid® nylon lens for extreme impact, UV, chemical and stress resistance. Optic appears clear until illuminated.



Ultra slim height of only 11mm. Lamp shown active.



2SB 980 887-002



2SB 980 887-001	2318	12 VOLT
2SB 980 887-002	2318BL (Blister Pack)	
2SB 980 887-201	231824V	24 VOLT
2SB 980 887-202	231824VBL (Blister Pack)	

Mounting	Suitable for horizontal and vertical mounting.		
Power Consumption	Stop: 3W	Rear position: <0.5W	
Protection	Reverse polarity protection. IP 6K7 (Protection against dust and temporary water immersion) IP 6K9K (Protection against dust and high-pressure/steam jet cleaning)		
Cable Length	Pre-wired with 0.3m cable.		
Lens Material	High impact and chemical resistant Grilamid® lens		
Compliance	ADR 49/00		

**STOP/REAR POSITION LAMP FUNCTIONS**

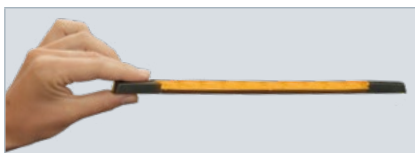


Stop

Rear position

**LED Rear Direction Indicator Lamp - Surface Mount**

Surface mount LED rear direction indicator lamp that is designed with an ultra wide visibility optic for significantly improved side visibility. Featuring a low profile, ultra durable Grilamid® nylon lens for extreme impact, UV, chemical and stress resistance. Optic appears clear until illuminated.



Ultra slim height of only 11mm. Lamp shown active.



2BA 980 888-022

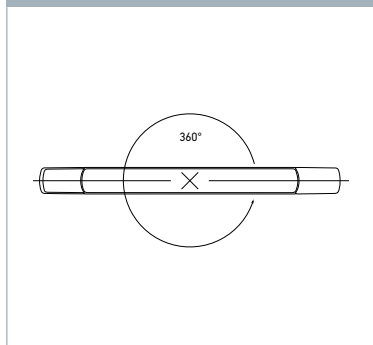


2BA 980 888-001	2168	12 VOLT
2BA 980 888-022	2168BL (Blister Pack)	
2BA 980 888-201	216824V	24 VOLT
2BA 980 888-222	216824VBL (Blister Pack)	

Mounting	Suitable for horizontal and vertical mounting. See diagram.		
Power Consumption	3W		
Protection	As per 2SB 980 887-001		
Cable Length	Pre-wired with 2.5m of sheathed multi-core cable. (Blister packs with 0.5m cable)		
Lens Material	High impact and chemical resistant Grilamid® lens		
Compliance	ADR 6/00: Cat 2a	E20 5891	ECE R6/01

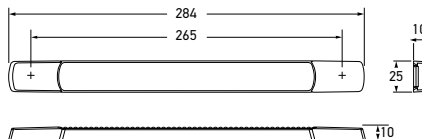
**MOUNTING DIAGRAM**

2BA 980 888-001, 2BA 980 888-022, 2BA 980 888-201, 2BA 980 888-222



Horizontal mount & Vertical mount:  
360° rotation around lamp (and vehicle) axis

MARKER AND SIGNAL LAMPS



2SD 980 819-001	237512V	12 VOLT
2SD 980 819-221	237524V	24 VOLT
Mounting	Suitable for horizontal and vertical mounting.	
Power Consumption	Stop: 2W Rear position: <0.5W Rear direction indicator: 2W	
Protection	Reverse polarity protection. IP 6K7 (Protection against dust and temporary water immersion) IP 6K9K (Protection against dust and high-pressure/steam jet cleaning)	
Cable Length	Pre-wired with 2.5m of sheathed multi-core cable.	
Lens Material	High impact and chemical resistant Grilamid® lens	
Spare Parts	9HD 980 885-007 White screw caps (Pack of 4) 9HD 980 885-017 Charcoal screw caps (Pack of 4) 9HD 980 885-107 Chrome plated screw caps (Pack of 4)	
Compliance	ADR 49/00 ADR 6/00: Cat 2a E24 5902 ECE6/01 ECE 7/02	

LED Stop/Rear Position/Rear Direction Indicator Lamp - Surface Mount

The slim Surface Mount Strip lamp is now available as a combination stop/tail and indicator light making it the most compact and certified STI lamp available. Featuring a low profile, ultra durable Grilamid® nylon lens for extreme impact, UV, chemical and stress resistance. Optic appears clear until illuminated.



Ultra slim height of only 11mm.

STOP/REAR POSITION/REAR DIRECTION INDICATOR LAMP FUNCTIONS



Stop                                      Rear position                                      Rear direction indicator

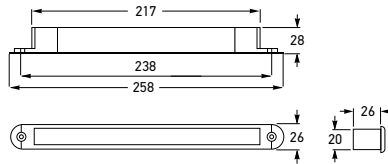
Surface Mount Strip Lamp - Screw Caps

SURFACE MOUNT STRIP LAMP SCREW CAPS		Colour	Quantity
9HD 980 885-017	9100909	CHARCOAL	PACK OF 4
9HD 980 885-007	9265209	WHITE	
9HD 980 885-107	9100910	CHROME PLATED	



### LED Stop/Rear Position Lamp

Red LED strip lamp suitable for coaches and buses, featuring Enhanced Definition Technology (EDT).



<b>2SB 959 074-501</b>	<b>233412V</b>	<b>12 VOLT</b>
<b>2SB 959 074-001</b>	<b>233424V</b>	<b>24 VOLT</b>
Mounting	Two hole recess mount. Suitable for horizontal or vertical mounting.	
Power Consumption	Stop: 2W Rear position: 0.3W	
Protection	Reverse polarity protection.	
Cable Length	Pre-wired with 300mm of cable.	
Compliance	ADR 49/00	

### LED Rear Direction Indicator Lamp

Amber LED strip lamp suitable for coaches and buses.



<b>2BA 959 075-501</b>	<b>215612V</b>	<b>12 VOLT</b>
<b>2BA 959 075-001</b>	<b>215624V</b>	<b>24 VOLT</b>
Mounting	Two hole recess mount. Suitable for horizontal or vertical mounting.	
Power Consumption	2W	
Protection	Reverse polarity protection.	
Cable Length	Pre-wired with 0.5m of sheathed multi-core cable.	
Compliance	ADR 6/00: Cat 2a	

### LED High Level Brake Lamp

Strip LED lamp designed for rear spoiler applications. Clear lens version optic appears clear until illuminated.

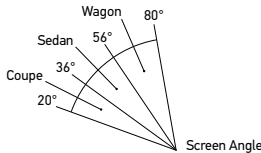


2DA 959 071-071



RED LENS		CLEAR LENS		
<b>2DA 959 071-591</b>	<b>5243</b>	<b>2DA 959 071-271</b>	<b>5243CLEAR</b>	<b>12 VOLT</b>
<b>2DA 959 071-772</b>	<b>524324V</b>			<b>24 VOLT</b>
Mounting	Two hole recess mount. Suitable for horizontal or vertical mounting.			
Power Consumption	2W			
Protection	Reverse polarity protection. IP 6K7 (Protection against dust and temporary water immersion) IP 6K9K (Protection against dust and high-pressure/steam jet cleaning)			
Cable Length	Pre-wired with 2.5m of multi-core cable.			
Compliance	ADR 49/00: Cat S3	E4 02 7547	ECE R7/02	

MARKER AND SIGNAL LAMPS



<b>2DA 959 190-001</b>	<b>5237 (Coupe)</b>	<b>20° - 36°</b>	<b>12 VOLT</b>
<b>2DA 959 191-001</b>	<b>5238 (Sedan)</b>	<b>37° - 56°</b>	
<b>2DA 959 192-001</b>	<b>5239 (Wagon)</b>	<b>57° - 80°</b>	
Mounting	Adhesive mounting tape to glass.		
Voltage	12V		
Power Consumption	3W		
Cable Length	Pre-wired with 2.5m of multi-core cable.		
Compliance	ADR 49/00: Cat S3		

LED High Level Brake Lamp

Designed for rear windows of angles from 20° (Coupe) to 80° (Wagon). Supplied with installation kit and instruction sheet. Optic appears clear until illuminated.

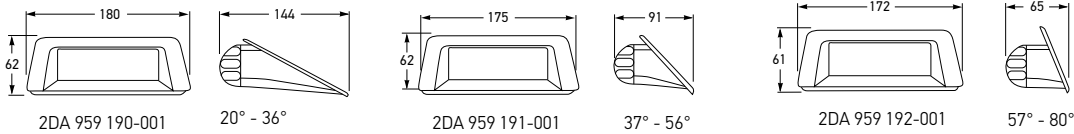


2DA 959 190-001  
Shown illuminated



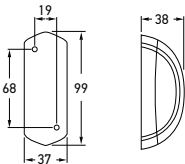
2DA 959 191-001

2DA 959 192-001



LED Caravan Red/White Clearance Lamp

Red/white side-rear clearance lamp for fitment at the rear of caravans. Combined front end outline (white) and rear end outline (red) lamps. LED replacement lamp for older bulb style lamps.



<b>2XS 205 020-041</b>		<b>12 VOLT</b>
Mounting	Vertical surface mount only at rear of caravan.	
Power Consumption	0.5W	
Cable Length	Pre-wired with 500mm multi-core cable.	
Compliance	ECE R7/02	



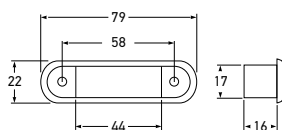


**LED Recess Mount Front Position/ End Outline Lamp**

White front position or front end outline LED lamp. Optic appears clear until illuminated.



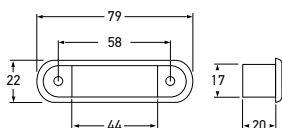
2PF 959 590-491



<b>2PF 959 590-491</b>	<b>2055</b>	
<b>2PF 959 590-547</b>	<b>2055BULK</b>	<b>PACK OF 4</b>
Mounting	Two hole recess mount. Suitable for horizontal or vertical mounting.	
Voltage	Multivolt™ for optimum brightness in 12 and 24 volt systems.	
Power Consumption	<1W	
Protection	Reverse polarity protection. IP 6K6 (Protection against dust and high-pressure water jets) IP 6K7 (Protection against dust and temporary water immersion)	
Cable Length	Pre-wired with 0.5m of sheathed multi-core cable. Bulk pack pre-wired with 2.5m of sheathed multi-core cable.	
Compliance	ADR 49/00	E4 0054 ECE R7/02

**LED Recess Mount Front End Outline Lamp**

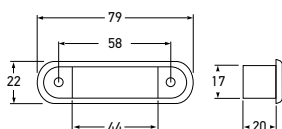
Amber front end outline LED lamp for trailers only. Optic appears clear until illuminated.



<b>2PF 959 590-341</b>	<b>2056</b>	
<b>2PF 959 590-357</b>	<b>2056BULK</b>	<b>PACK OF 4</b>
Mounting	Suitable for horizontal mounting.	
Compliance	ADR 49/00	
Other specifications as per 2PF 959 590-491.		

**LED Recess Mount Cab Marker Lamp**

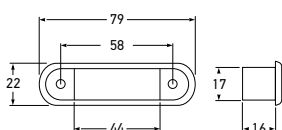
Amber cab marker LED lamp. Optic appears clear until illuminated.



<b>2XS 959 650-011</b>	<b>2057</b>	
<b>2XS 959 650-027</b>	<b>2057BULK</b>	<b>PACK OF 4</b>
Mounting	Suitable for horizontal mounting.	
Compliance	ADR 45/01	
Other specifications as per 2PF 959 590-491.		

**LED Recess Mount Rear Position/ End Outline Lamp**

Red rear end outline lamp or rear position LED lamp. Optic appears clear until illuminated.

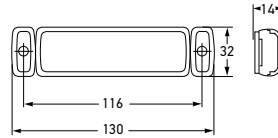
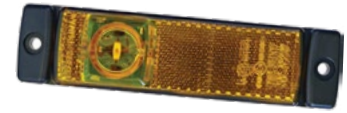


<b>2BA 959 610-441</b>	<b>2308</b>	
<b>2BA 959 610-457</b>	<b>2308BULK</b>	<b>PACK OF 4</b>
Compliance	ADR 49/00	E4 02 7597 ECE R7/02
Other specifications as per 2PF 959 590-491.		

MARKER AND SIGNAL LAMPS

LED Side Marker Lamp - Amber

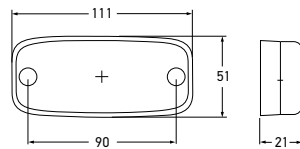
LED side marker lamp with reflex reflector for horizontal mounting. Reverse polarity protection.



2PS 008 645-011		12 VOLT
2PS 008 645-001		24 VOLT
Power Consumption	12V 0.5W 24V 1W	
Cable Length	Pre-wired with 1.5m of sheathed multi-core cable.	
Compliance	(E1) 1395 (E1) 1396 ECE R3/02	ECE R91/00

LED Side Marker Lamp - Amber

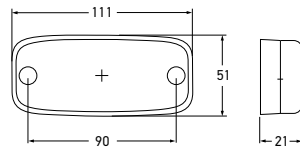
LED side marker with inbuilt amber retro reflector. Bridge circuit for protection against polarity reversal.



2PS 345 600-001		12 VOLT
2PS 345 600-011		24 VOLT
Power Consumption	12V 0.7W 24V 1.3W	
Protection	Fully sealed against dust, high-pressure washing/steam jet cleaning	
Cable Length	Pre-wired with 0.5m of sheathed multi-core cable.	
Compliance	ADR 74/00: Cat. SM1 ADR 47/00 (E24) 5881 ECE R3/02	ECE R91/00

LED Rear Position Lamp - Red

LED rear position lamp with inbuilt red retro reflector. Bridge circuit for protection against polarity reversal.



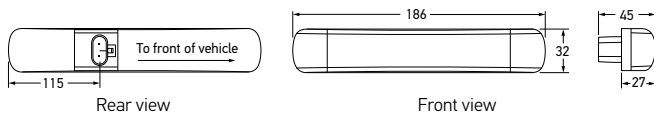
2TM 963 639-301	2305	12 VOLT
2TM 963 639-311	2306	24 VOLT
Power Consumption	12V 0.5W 24V 1W	
Protection	Fully sealed against dust, high-pressure washing/steam jet cleaning	
Cable Length	Pre-wired with 5m of sheathed multi-core cable.	
Compliance	ADR 47/00 ADR 49/00 (E24) 5881 ECE R3/02	ECE R7/02

LED Auxiliary Side Indicator Cat. 6

LED side indicator lamp approved for heavy vehicles and buses/coaches, sealed against dust and water, it will provide many years of trouble free usage. Optic appears clear until illuminated.



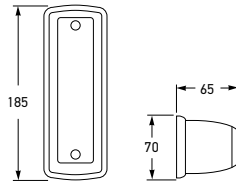
Rear view showing super seal connector



2BM 011 788-041		24 VOLT
Mounting	Horizontal surface mount via adhesive strip	
Power Consumption	4W	
Protection	Reverse polarity IP 6K9 (Protection against dust and high-pressure/steam jet cleaning)	
Spare Parts	8KW 959 881-525	2 Pin super seal plug
Compliance	(E11) 7506 ECE R6/01 Cat.6	
The lamp features an adhesive strip and is attached by pressing on to the vehicle.		

**Supplementary Side Direction Indicator Lamp (Cat. 6)**

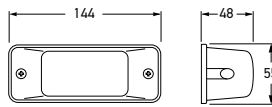
Single bulb holder.



<b>2BA 905 273-002</b>	<b>2142</b>	
Mounting	Surface mount	
Bulbs to Suit	12V 24V	8GA 002 073-163 8GA 002 073-245
Compliance	ADR 6/00: Cat 6	

**Supplementary Side Direction Indicator Lamp (Cat. 6)**

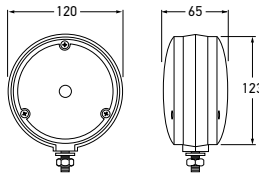
Side mounted direction indicator lamp with rubber base. Suitable for insulated earth circuits.



<b>2BM 006 692-011</b>	<b>2153</b>	<b>LEFT HAND SIDE</b>
<b>2BM 006 692-021</b>	<b>2154</b>	<b>RIGHT HAND SIDE</b>
Mounting	Surface mount.	
Bulbs to Suit	12V 24V	8GA 002 073-163 8GA 002 073-245
Compliance	ADR 6/00: Cat 6	
Arrow on lens must face direction of travel.		

**Front Direction Indicator/ Supplementary Side Direction Indicator Lamp (Cat.1 and 5)**

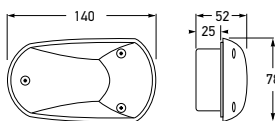
Double-sided direction indicator lamp.



<b>2BA 900 763-291</b>	<b>2127</b>	
Mounting	Single bolt mount.	
Bulbs to Suit	12V 24V	8GA 002 073-163 8GA 002 073-245
Additional Function	Supplementary side direction indicator lamp where 12V (8GA 002 071-171) or 24V (8GA 002 071-245) bulbs are used.	
Compliance	ADR 6/00: Cat 1	ADR 6/00: Cat 5

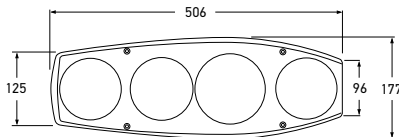
**Supplementary Side Direction Indicator Lamp (Cat. 6)**

Side mounted direction lamp suitable for either left or right hand mounting.



<b>2BM 008 355-021</b>	<b>215524V (Amber lens)</b>	<b>24 VOLT</b>
Bulbs to Suit	24V	8GA 002 073-245
Compliance	ADR 6/00: Cat 6	
Arrow on lens must face direction of travel.		

MARKER AND SIGNAL

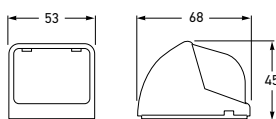


Stop/Rear Position/Rear Direction Indicator/Reversing Lamp

For mobile homes. With reversing light and round reflector.



2VP 341 419-127		RIGHT HAND SIDE
2VP 341 419-137		LEFT HAND SIDE
Mounting	Horizontal flush mount into body.	
Bulbs to Suit	12V	24V
	Stop/Rear position:	8GD 980 329-001    8GD 002 078-242
	Rear direction indicator:	8GA 002 073-163    8GA 002 073-245
	Reversing:	8GA 002 073-163    8GA 002 073-245
Compliance	E4 9836    ECE R6/01    ECE R7/02    ECE R23/00    ECE R3/02	

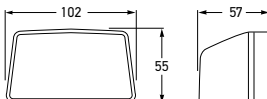


Front Position/Front End Outline Lamp - White

Fitted with polycarbonate lens and single bulb holder.



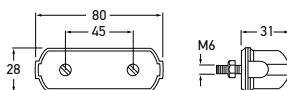
2PF 006 679-031	2066
Mounting	Surface mount.
Bulbs to Suit	12V    8GA 002 071-511 24V    8GA 002 071-254
Compliance	ADR 49/00    E1 32 /691    ECE R7/02



Number Plate Lamp



2KA 951 068-043	2553	12 VOLT
Bulbs to Suit	12V    8GA 002 071-511	
Compliance	ADR 48/00    E1 22819    ECE R4/00	



Number Plate Lamp



2KA 001 389-121	2555
Mounting	Two bolt mount.
Bulbs to Suit	12V    8GA 002 092-021 24V    8GM 002 092-251
Compliance	ADR 48/00    E1 12815    ECE R4/00
Two lamps required for ADR compliance.	

ADR CATEGORIES OF DIRECTION INDICATORS

ADR compliant indicators are categorised according to their intended function.

- Category 1    Direction indicators for the front of the vehicle.
- Category 2    Direction indicators for the rear of the vehicle.
- Category 5    Supplementary side direction indicators for use on a vehicle also equipped with categories 1 and 2 direction indicators.
- Category 6    Supplementary side direction indicators for use on a heavy vehicle also equipped with categories 1 and 2 direction indicators.

Refer to page 296 for ADR reference guide.

DuraLED® Accessories

Spare screw caps or screw bosses for the DuraLED® lamp range. Two screw caps and two screw bosses are required per lamp.



SCREW CAPS - DURALED®		Colour	Quantity
9HD 959 065-008	9233015	BLACK	PACK OF 4

SCREW CAPS - DURALED® COMBI-S/COMBI-R		Colour	Quantity
9HD 980 712-007	9237815BULK	BLACK	PACK OF 4

SCREW BOSS		Quantity
9NH 959 059-008	9233017	PACK OF 4

MOUNTING SPACERS - DURALED® COMBI		Colour
8HG 980 719-001	98071900	BLACK
8HG 980 719-011	98071901	WHITE

Mounting spacer allows lamps to be surface mounted with the cable exiting any side of the spacer, or through the centre.

DuraLED® Marker Lamp Accessories

Spare mounting shrouds for the surface mount marker and surface mount courtesy lamp range. One mounting shroud is required per lamp.



9BG 910 274-001



9BG 959 565-018

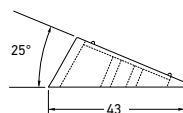


9BG 959 565-408

SHROUDS - DURALED® SURFACE MOUNT		Colour	Quantity
9BG 910 274-001	9205308 (Nylon)	BLACK	SINGLE
9BG 959 565-038	9205310BULK	RED	PACK OF 4
9BG 959 565-018	9205311BULK	WHITE	
9BG 959 565-408	9205320BULK	CHROME PLATED	

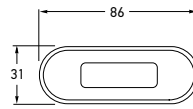


9BG 959 565-038



ANGLE MOUNT - DURALED® SURFACE MOUNT		Colour	Quantity
8HG 910 273-001	9205307	BLACK	SINGLE

MARKER AND SIGNAL



RIMS - DURALED® FLUSH MOUNT MARKER AND SIGNAL/LED WIDE RIM COURTESY LAMPS		
	Colour	Material
9AB 959 686-001	95968600	BLACK
9AB 959 686-011	95968601	WHITE
9AB 959 685-002	95968500	POLISHED
9AB 959 685-062	95968506	SATIN CHROME PLATED
		316 STAINLESS STEEL

To suit wide marker and signal lamps with 29mm wide rim. Does not fit narrow rim lamps.



DuraLED® Marker Lamp Accessories

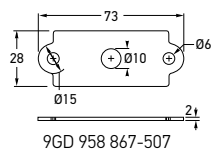


9AB 959 686-001

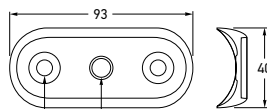


9AB 959 686-011

DURALED® ANGLE MOUNT NUMBER PLATE BRACKET		
8HG 958 029-001		SINGLE



9GD 980 867-507



9GD 958 028-001

DuraLED® Flush Mount Gaskets

9GD 980 867-507		RECTANGULAR SEAL
9GD 958 028-001		CURVED SEAL



9GD 980 867-507



9GD 958 028-001

DuraLED® Marker Lamp Accessories

SCREW CAPS - DURALED® FLUSH MOUNT		
	Colour	Quantity
9HD 980 858-007	9231009BULK	BLACK
9HD 980 858-017	9231011BULK	WHITE
		PACK OF 4

Pack sizes of 50 available upon request.



9HD 980 858-007



9HD 980 858-017

DuraLED® DT Marker and Signal Lamp Accessories



DURALED® DT MARKER LAMP HOUSING			
		Colour	Quantity
9BG 980 996-002	9207309	BLACK	SINGLE



9BG 980 665-001

9BG 980 665-101

DURALED® HEAVY DUTY MARKER STAINLESS STEEL HOUSING			
		Colour	Quantity
9BG 980 665-001	9205809		SINGLE
9BG 980 665-101	9205810	POLISHED	

Surface Mount Strip Lamp - Screw Caps



9HD 980 885-017

9HD 980 885-007

9HD 980 885-107

SURFACE MOUNT STRIP LAMP SCREW CAPS			
		Colour	Quantity
9HD 980 885-017	9100909	CHARCOAL	PACK OF 4
9HD 980 885-007	9265209	WHITE	
9HD 980 885-107	9100910	CHROME PLATED	



SPARE PLASTIC CAPS			
		Colour	Quantity
9HD 959 182-032	9524030	BLACK	PACK OF 50

To suit narrow and wide rim LED courtesy, marker and strip lamps.

DT Marker and Signal Lamp Connectors



8JA 959 736-801

DT PLUG, WEDGE AND CONTACTS			
		Colour	Quantity
8JA 959 736-811	4960P		2 POLE
8JA 959 736-801	4963P		6 POLE



8JA 959 736-811

MARKER AND SIGNAL

COVERS			
		Colour	Quantity
8HG 959 027-001	9236608	BLACK	SINGLE
8HG 959 027-011	9236611	WHITE	

SCREW BOSS			
8HG 959 028-011	9236617	WHITE	PACK OF 4

MOUNTING SPACER			
8HG 959 952-002		BLACK	SINGLE
8HG 959 952-012		WHITE	

MOUNTING PACK	
8HG 958 421-381	9239108

ACCESSORIES		
8HG 980 726-001	9239408	FRAME
8HG 980 727-002	9239409	15MM SPACER

Mounting spacer allows lamps to be surface mounted with the cable exiting any side of the spacer, or through the centre.

**EuroLED® Accessories**

Spare covers or screw bosses for the EuroLED® range of lamps. One cover and two screw bosses are required per lamp.



**LED Combination Lamp Mounting Pack**

Mounting pack to suit LED combination lamp 2VP 980 980-001, 2VD 980 980-011 and 2VD 980 980-021.



**LED Combination Trailer Lamp Accessories**

To suit LED combination lamp 2VA 980 720-071 and 2VB 980 720-561



8HG 980 727-002

8HG 980 726-001



### Jumbo-S Accessories

Accessories for the Jumbo-S LED lamp range.



MOUNTING GASKET BASE, SPACERS AND 1¼" SCREWS		Quantity
9HD 980 768-801	9236108	SINGLE

Allows Jumbo-S lamps to be surface mounted.

### Designline /Jumbo Accessories

Housings and screw caps for the Designline/ Jumbo lamp range.



HOUSING - SINGLE, DOUBLE AND TRIPLE MODULE		MODULE
9BG 958 568-027	9204109BULK	SINGLE
9BG 958 559-011	9242209	DOUBLE
9BG 958 615-011	9242309	TRIPLE

### Jumbo-S Triple Chamber Housings

The Jumbo-S LED Triple Module now has additional improvements to ensure it remains the most reliable and most popular lamp cluster on the market.



HOUSING - TRIPLE MODULE		MODULE
9BG 958 338-001	Cable grommet exit	TRIPLE
9BG 958 338-011	ø16.6mm centre hole to suit M16 conduit gland	TRIPLE
9BG 958 338-021	To suit flange mount DT connector	TRIPLE

Housings are supplied with gaskets and mounting fasteners. M16 conduit gland and flange mount DT connector need to be sourced separately.

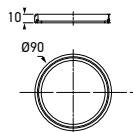


9BG 958 338-011

9BG 958 338-021

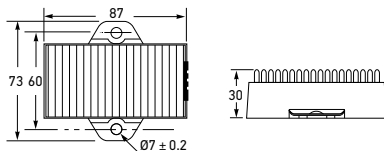
### 83mm Round Lamps - Mounting Rings

Mounting rings to suit 83mm round lamp range. Allows retro-fitting of lamp into existing applications with mounting holes larger than a diameter of 83mm.




MOUNTING RING		Diameter
9GD 980 696-002	98069600	90MM O.D

MARKER AND SIGNAL



**LED Direction Indicator Control Unit**

The smart indicator control unit is designed to maintain compliant indicator flash rates when upgrading traditional 12V / 21W bulb lamps with low power consumption LED lamps. Once the HELLA Indicator Control Unit is installed, (one per bulb lamp) the vehicle's flasher unit will see normal power consumption and not activate warnings such as a light on the dash or commence fast indicator flashing. The new HELLA unit activates when it receives a nominal current to confirm an LED lamp is connected, it then adds additional current to simulate a 21W bulb. This is a superior solution to the alternative of adding resistors to the indicator circuit. Resistors will continue to draw current, even if an LED lamp or wiring fails and it may not provide the driver with the required lamp failure warning.

<b>5DS 357 030-011</b>		<b>12 VOLT</b>
Mounting	Two bolt surface mount	
Voltage	12V DC	
Power Consumption	Simulates a 21W conventional bulb	
Protection	IP 6K7 (Protection against dust and temporary water immersion)	
Cable Length	300mm	
Weight	235g	
Compliance	ECE-R10 	

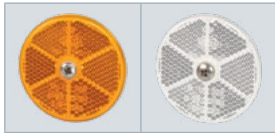


Retro Reflectors

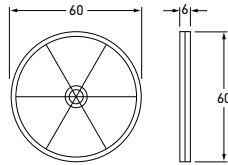
60mm diameter complete with mounting screw, 22cm<sup>2</sup>. Reflectors with self adhesive are ECE certified.



8RA 002 014-233



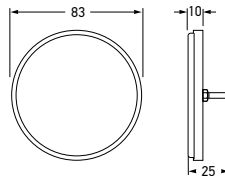
8RA 002 014-253 8RA 002 014-261



8RA 002 014-233	2915	☐	RED
8RA 002 014-282	29151 (Self adhesive)		
8RA 002 014-253	2916	☐	AMBER
8RA 002 014-302	29161 (Self adhesive)		
8RA 002 014-261	2917	☐	WHITE
8RA 002 014-292	29171 (Self adhesive)		
Compliance		ADR 47/00 ECE R3/02	

Retro Reflector - Red

83mm diameter red acrylic retro reflector with black rim, 48cm<sup>2</sup>.



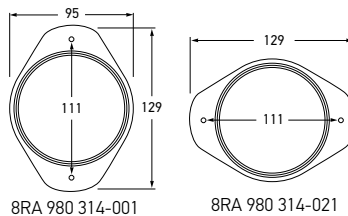
8RA 002 016-113	2902	
Mounting	Single bolt mount.	
Compliance	ADR 47/00	

Retro Reflector - Red

83mm diameter acrylic retro reflector with plastic or metal surround, 48cm<sup>2</sup>.



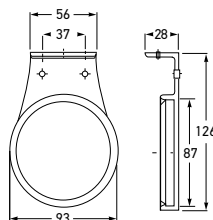
8RA 980 314-001



8RA 980 314-001	2910 (Red)	☐	VERTICAL
8RA 980 314-021	2910H (Red)	☐	HORIZONTAL
Mounting	Two hole surface mount.		
Compliance	ADR 47/00		

Retro Reflector - Red

83mm diameter red acrylic retro reflector with plastic surround, 48cm<sup>2</sup>.

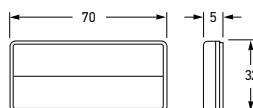


8RA 980 314-201	2930	☐	
8RA 980 314-207	2930BULK		PACK OF 32
Mounting	Right angled base with two holes for optional surface mount.		
Compliance	ADR 47/00		

MARKER AND SIGNAL

Retro Reflectors

70 x 31.5mm self adhesive, 18cm<sup>2</sup>.



8RA 004 412-003	2919		AMBER
8RA 004 412-024	2920		RED
8RA 004 412-027	2920BULK (Pack of 20)		
8RA 004 412-013	2921		WHITE
Compliance	ADR 47/00		



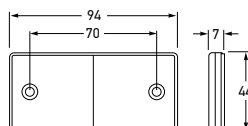
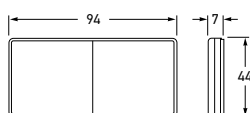
8RA 004 412-003



8RA 004 412-024 8RA 004 412-013

Retro Reflectors

94 x 44mm self adhesive (except two bolt hole versions), 33cm<sup>2</sup>.



8RA 003 326-001 - Two bolt holes

8RA 003 326-045	2922		AMBER
8RA 003 326-013	29222 (Two bolt holes)		
8RA 003 326-035	2923		RED
8RA 003 326-038	2923BULK (Pack of 20)		
8RA 003 326-006	29232 (Two bolt holes)		
8RA 003 326-007	29232BULK (Two bolt holes - Pack of 20)		
8RA 003 326-054	2924		WHITE
Compliance	ADR 47/00 ECE R3/02		



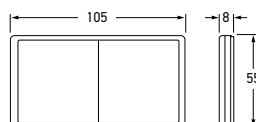
8RA 003 326-013



8RA 003 326-035 8RA 003 326-054

Retro Reflectors

105 x 55mm self adhesive, 50cm<sup>2</sup>.



8RB 004 713-003	2925		AMBER
8RA 342 007-102	2926		RED
8RA 342 007-107	2926BULK (Pack of 100)		
8RA 342 007-801	2926BL (Blister pack - 2 Pack)		
Compliance	ADR 47/00		



8RB 004 713-003



8RB 342 007-102

8RA 342 007-801



To suit 2320

DESIGNLINE LAMP SPARE PARTS		
9EM 958 565-001	9232001	RED LENS
9EL 958 564-031	9214401	AMBER LENS
9EL 958 564-021	9204101	CLEAR LENS



To suit 2144

To suit 2041



To suit 2303

76mmØ LAMP SPARE PARTS		
9EL 956 388-011	2245901	RED LENS
9EL 980 318-001	2683001	AMBER LENS
9EL 956 388-001	2685601	CLEAR LENS



To suit 2100

To suit 2000



To suit 2325

84 X 84mm LAMP SPARE PARTS		
9EL 110 540-002	9232501	RED LENS
9EL 115 003-022	9238401	RED/CLEAR LENS
9EL 110 536-001	9214701	AMBER LENS
9EL 110 544-002	9140501	CLEAR LENS



To suit 2384

To suit 2147

To suit 1405



To suit 2370

STOP/REAR POSITION/REAR DIRECTION INDICATOR SPARE PARTS		
9EM 910 023-032	2316302	RED/AMBER LENS



To suit 2127

110mmØ LAMP SPARE PARTS		
9EL 910 325-012	2980101	RED LENS
9EL 910 325-002	2980009	AMBER LENS
9EL 910 325-021	2980008	CLEAR LENS

MARKER AND SIGNAL

JUMBO LAMP SPARE PARTS		
9EL 954 006-001	9231901	RED LENS
9EL 954 004-001	9214301	AMBER LENS
9EL 954 004-011	9204301	CLEAR LENS



To suit 2319



To suit 2143

To suit 2043

STOP/REAR POSITION/REAR DIRECTION INDICATOR/NUMBER PLATE LAMP SPARE PART		
9EL 910 272-014	9239601	RED/AMBER LENS



To suit 2396

SIDE MARKER LAMP SPARE PARTS		
9EL 905 635-002	9200601	RED LENS
9EL 905 635-012	9200602	AMBER LENS



To suit 2006

MARKER LAMP SPARE PARTS		
9EL 910 089-011	9204201	RED/AMBER LENS
9EL 910 089-021	9204401	AMBER LENS



To suit 2042

MARKER LAMP SPARE PARTS		
9EL 910 028-052	9230401	RED LENS
9EL 910 327-021	9214001	AMBER LENS
9EL 910 327-031	9214101	CLEAR LENS



To suit 2304



To suit  
9EL 910 327-021

To suit  
9EL 910 327-031