



Hella New Zealand Ltd.

Typbezeichnung: 2KA 959 640

Beleuchtungseinrichtung für das hintere Kennzeichenschild

Blatt 2

Gehört zur G. Nr.: E4 4068

Einbauanweisung-Nr.

**Kennzeichenbeleuchtungsanordnung für Kraftfahrzeuge**

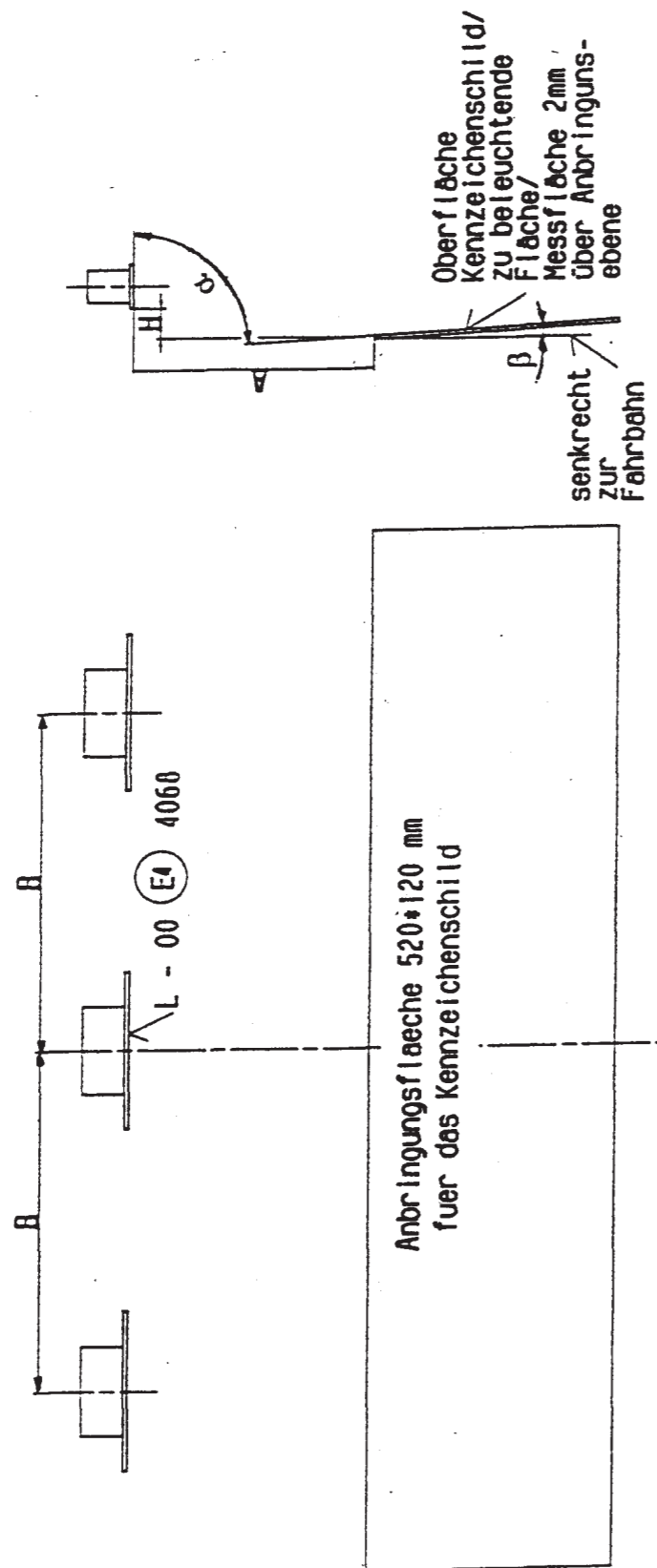
**Lichtquelle:** 2LED'S je Leuchte in Reihe geschaltet

**Prüfspannung:** 13,5 Volt bzw. 28 Volt / **Versorgungsspannung:** 10 bis 33 Volt / **Nennleistung:** 3 x 0,5 Watt

Das Kennzeichenschild darf nur innerhalb der Anbringungsfläche angebracht werden, wobei die Auflageebene des Kennzeichenschildes in der Anbringungsebene liegen muss.

Grenzwerte für Abstandsmaße und Winkel ohne Toleranzangabe  $\pm 1\text{mm}$  bzw.  $\pm 1^\circ$  vom angegebenen Nennwert.

H = 15 mm - 20 mm A = 100 mm - 120 mm B = 170 mm  $\alpha = 87^\circ$   $\beta = 3^\circ$



2005-09-15

Der An- bzw. Einbau der Geräte hat nach anliegenden An- bzw. Einbauunterlagen (z. B. Skizze und Anlage A) zu erfolgen.

INSTRUCTION SHEET

for: **2KA 959 640-10**



**APPLICATION AND MOUNTING INSTRUCTIONS**

**LED NUMBER PLATE LAMP**

Multivolt capable 10 - 33 volts

**Three Lamps must be mounted as follows**

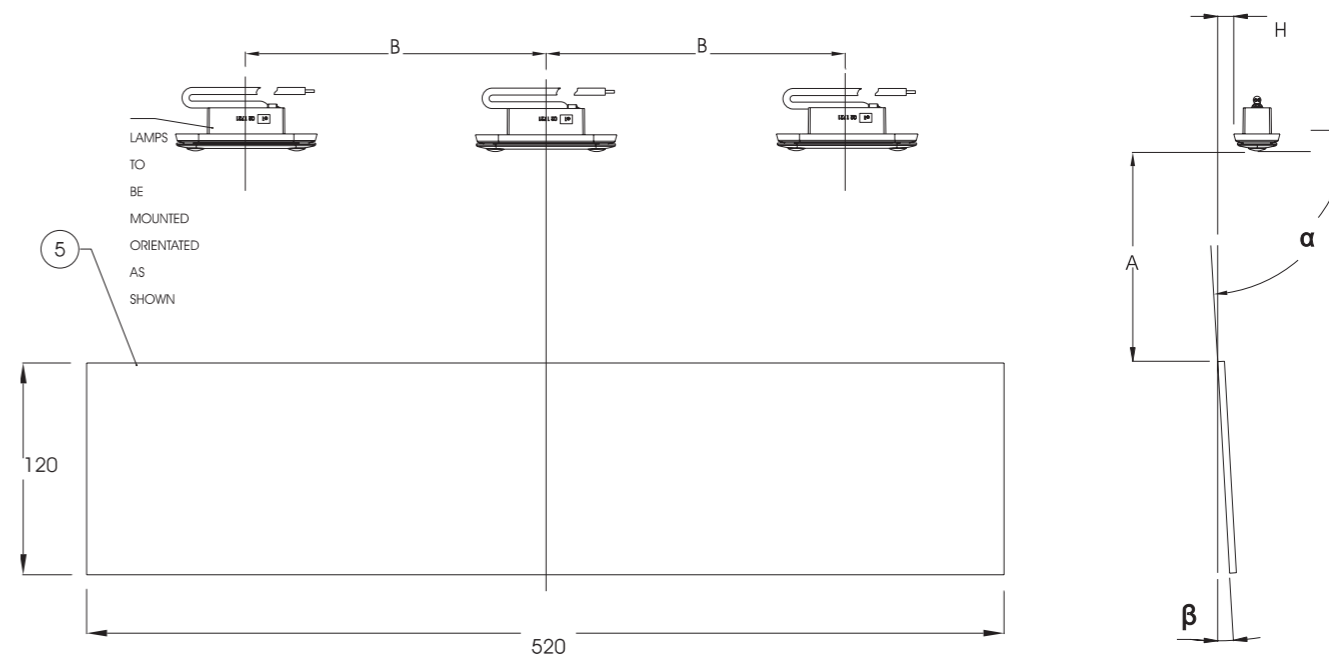
- Lamp mounting surface must be as per diagram 1
- Lamps must be mounted above the number plate, refer to diagram below

**Lens Marking Installation Requirements**

This Number Plate Lamp, identified by lens marking L-00 (E4) 4068 and the HELLA logo was manufactured to comply with ECE Regulation 4 Illumination of rear-registration plates of motor vehicles (except motor cycles) and their trailers

- A tolerance of +/- 1 degree and +/- 1mm applies on all mounting details.
- Three lamps are required for ECE compliance.

Diagram 1



H = 15mm-20mm  
 A = 100mm-120mm  
 B = 170mm  
 $\alpha = 87^\circ$   
 $\beta = 3^\circ$

All dimensions in millimetres

HELLA-New Zealand Limited, Auckland, New Zealand



INSTRUCTION SHEET  
for: **2KA 959 640-10**



RDW

Vehicle Technology Division



THE NETHERLANDS  
(NEDERLAND)



RDW

COMMUNICATION

Concerning: APPROVAL GRANTED  
APPROVAL EXTENDED  
APPROVAL REFUSED  
APPROVAL WITHDRAWN  
PRODUCTION DENIED/DISCONTINUED

of a type of device for the illumination of rear registration plates of motor vehicles (except motor cycles) and their trailers pursuant to Regulation No. 4

Approval No.: E4 - 4R - 00 4068

Extension No.: 1

Approval mark:



1 Trade name or mark of the device

: HELLA

2 Manufacturer's name for the type of device

: 2KA 959 640

3 Manufacturer's name and address

: Hella-New Zealand Ltd,  
81-83 Ben Lomond Crescent  
Pakuranga, Auckland  
New Zealand

4 If applicable, name and address of the manufacturer's representative

: Sylvier B. V.,  
Celiusbaan 2  
3430 BJ Nieuwegein  
The Netherlands



5 Submitted for approval on

: 16 July 2004, 15 September 2005

6 Technical service responsible for conducting approval tests

: N.V. KEMA

7 Date of report issued by that service

: 11 August 2004, 4 October 2005

8 Number of report issued by that service

: 2076150-QUAL/TL 04-117, 2087070-QUAL/TL 05-128

P.O. Box 777  
2000 AT Zoetermeer  
The Netherlands

Tel. +31 (0)79 345 81 43  
Fax +31 (0)79 345 80 43  
www.rdw.nl

Vehicle Approval and Information

Approval No.: E4 - 4R - 00 4068

Extension No.: 1

9 Concise description:  
Device for illuminating

: a-~~tail~~ plate  
a wide plate  
a-~~plate~~ for agricultural or forestry  
trailer

Number and category of filament lamp(s)

: 2 non-replaceable light emitting diodes  
(LED's) 10-33 V 0.5 W for each of the  
three lamps

Light source module

: --

Geometrical conditions of installation (position(s) and inclination(s) of the device in relation to the space to be occupied by the registration plate and/or different inclinations of this space)

: See annexed drawing

10 Position of the approval mark

: See annexed drawing

11 Reason(s) for extension (if applicable)

: The use of three lamps for the  
illumination of the rear registration  
plate.

12 Approval granted/refused/extended/withdrawn

: Zoetermeer

13 Place

: --

14 Date

: 11 OKT 2005

15 Signature

: J.C.M. Hoos

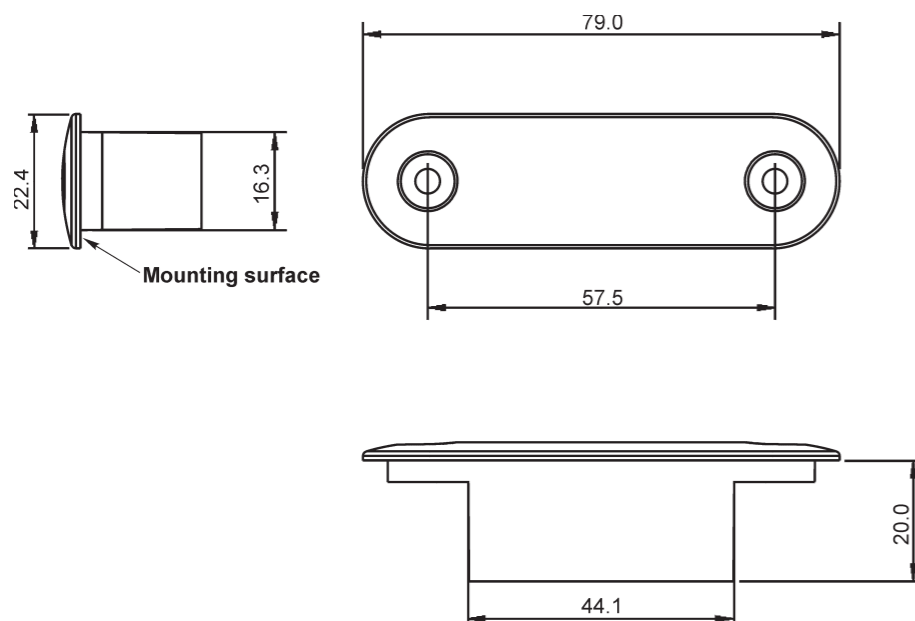


16 The list of documents deposited with the Administrative Service which has granted approval is annexed to this communication and may be obtained on request:  
- 1 Drawing No. 2KA 959 640, dated 2004-08-06,  
- 1 Drawing No. 2KA 959 640, dated 2005-09-15 (annexed),  
- Test report as mentioned in item 8



INSTRUCTION SHEET  
for: **2KA 959 640-10**

Lamp Dimensions



Wiring Colour Coding

The LED Number Plate Lamp is Multivolt capable allowing full light output between 10 and 33 volts. LED lamp modules are polarity conscious. Reverse polarity will not damage this product but will inhibit its function. HELLA recommends wire connections be soldered, and heat shrink tubing applied to seal the joint.

Colour	Connect to	Power Consumption
Black	Earth (-)	-
White (Red trace)	Positive(+)	0.5 watt

**NB:** Lamp must be protected by a fuse rated at 2 amperes maximum.

Compatibility to existing electrical systems

It is important for the installer to ascertain the compatibility of the low power consumption LED lamps with the electrical and/or electronic systems of the complete vehicle, including trailers. In most cases the reduced power consumption is beneficial by imposing less demands on the entire electrical system.

For certain functions some electrical systems rely on a set power consumption for monitoring whether, for example, a trailer is connected.

Operation of this lamp using alternating current or modulated direct voltage will cause premature light failure. HELLA recommends connecting ADR or ECE certified Multivolt LED signal and marker lamps to a continuous (unmodulated) 12V or 24V power supply to ensure safe light operation.

**FIT AND FORGET - BY DESIGN**



Congratulations, the product you have selected comes from **HELLA** - a world leader in LED lighting design.

Following the launch of the first LED automotive signal lamps in 1990, **HELLA** Design and Innovation continues to set new standards. **HELLA** innovative solutions have been incorporated into millions of lamps, engineered and tested to the most stringent standards, to suit the most demanding environmental conditions.

The cornerstone to the success of our products is our no compromise **Fit and Forget - by Design** philosophy which is incorporated into every step of the product life cycle.

In a world consuming finite resources at an ever faster rate, **Fit and Forget - by Design** is the right environmental choice that also makes perfect economic sense to customers that consider the total life cycle Cost of Ownership.

For general comments about Hella's products please contact us on E-mail at [techfeedback@hella.co.nz](mailto:techfeedback@hella.co.nz)