

Contents

Accessories

DuraLED Lamps.....	106 - 108
EuroLED Lamps.....	109
83mm Round LED Lamps.....	109
LED Combination Lamps.....	109
LED Light Bar.....	110
Number Plate.....	110
Strip Lamps.....	110
Wide and Narrow Rim Courtesy Lamps.....	111
Marker and Courtesy Lamp Gaskets.....	111
Low Profile Step Lamps.....	111
Round or Square Courtesy Lamps.....	112
Interior Strip or CHMSL Lamps.....	112

DuraLED Accessories

Spare screw caps or screw bosses for the DuraLED lamp family. Two screw caps and two screw bosses are required per lamp.



SCREW CAPS - DURALED		
Part Number	Colour	Quantity
9HD 959 065-037	RED	PACK OF 4
9HD 959 065-017	WHITE	
9HD 959 065-067	BLUE	
9HD 959 065-057	GREEN	
9HD 959 065-047	YELLOW	
9HD 959 065-007	BLACK	
9HD 959 065-077	AMBER	



SCREW BOSS - DURALED	
Part Number	Quantity
9NH 959 059-007	PACK OF 4

DuraLED Combi-S/Combi-R Accessories



SCREW CAPS - DURALED COMBI-S/COMBI-R		
Part Number	Colour	Quantity
9HD 980 712-038	RED	PACK OF 4
9HD 980 712-018	WHITE	
9HD 980 712-068	BLUE	
9HD 980 712-058	GREEN	
9HD 980 712-048	YELLOW	
9HD 980 712-008	BLACK	
9HD 980 712-078	AMBER	



RIMS (SINGLE)		
Part Number	Colour	Material
9AB 959 686-012	WHITE	PLASTIC
9AB 959 686-002	BLACK	
9AB 959 685-201 (ECE engraved)	POLISHED	316 STAINLESS STEEL
9AB 959 685-001		
9AB 959 685-021	GOLD PLATED	
9AB 959 685-061	SATIN CHROME PLATED	



DuraLED Flush Mount Marker and Courtesy Lamp Accessories

Accessory rims and screw caps for the DuraLED flush mount marker and courtesy lamp family.



P/N 9AB 959 686-012



P/N 9AB 959 686-002

SCREW CAPS		
Part Number	Colour	Quantity
9HD 980 858-008	BLACK	PACK OF 4
9HD 980 858-038	RED	
9HD 980 858-018	WHITE	
9HD 980 858-068	BLUE	
9HD 980 858-058	GREEN	
9HD 980 858-048	YELLOW	
9HD 980 858-078	AMBER	
9HD 980 858-028	GREY	



P/N 9HD 980 858-008

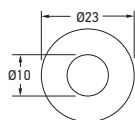


P/N 9HD 980 858-048

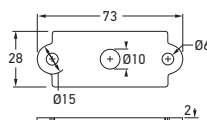


DuraLED Surface Mount Marker and Courtesy Lamp Gaskets

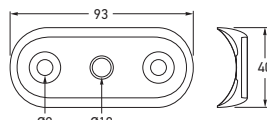
Accessory gaskets for the DuraLED lamp range.



Seal Round
P/N 9GD 980 867-007



Seal Rectangular
P/N 9GD 980 867-507



Seal Curved
P/N 9GD 958 028-001

1X2 FLUSH MOUNT	
Part Number	
9GD 958 028-001	SEAL CURVED
9GD 980 867-507	SEAL RECTANGULAR
9GD 980 867-007	SEAL ROUND



P/N 9GD 958 028-001



P/N 9GD 980 867-507



P/N 9GD 980 867-007

DuraLED DT Marker and Signal Lamp Accessories



P/N 9BG 980 996-002



P/N 9BG 980 996-102

HOUSING		
Part Number	Colour	Quantity
9BG 980 996-002	BLACK	SINGLE
9BG 980 996-102	WHITE	

DuraLED Surface Mount Marker and Courtesy Lamp Accessories

Spare mounting shrouds for the surface mount marker and surface mount courtesy lamp families. One mounting shroud is required per lamp.



P/N 9BG 959 565-077



P/N 9BG 959 565-037

HOUSING		
Part Number	Colour	Quantity
9BG 959 565-007	BLACK	PACK OF 4
9BG 959 565-037	RED	
9BG 959 565-017	WHITE	
9BG 959 565-067	BLUE	
9BG 959 565-057	GREEN	
9BG 959 565-047	YELLOW	
9BG 959 565-077	AMBER	
9BG 959 565-407	CHROME PLATED	



9BG 959 565-007

9BG 959 565-017

9BG 959 565-067

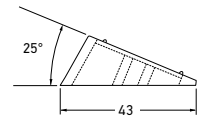
9BG 959 565-057

9BG 959 565-047

9BG 959 565-407

Angle Mount to suit DuraLED Marker Lamps

Angle bracket to assist in the vertical alignment of the DuraLED marker range.



HOUSING	
Part Number	Colour
8HG 959 571-011	BLACK

ACCESSORIES

COVERS AND SCREW BOSS		
Part Number	Colour	Quantity
9HD 959 027-007 (Cover)	BLACK	PACK OF 4
9NH 959 028-017 (Screw Boss)		
9HD 959 027-017 (Cover)	WHITE	
MOUNTING SPACERS		
Part Number	Colour	Quantity
8HG 959 952-002	BLACK	SINGLE
8HG 959 952-012	WHITE	
8HG 959 952-022	YELLOW	

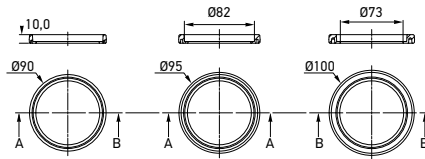
EuroLED Accessories

Spare covers or screw bosses for the EuroLED family of lamps. One cover and two screw bosses are required per lamp.



Adaptor Rings

Adaptor ring for the 83mm round LED lamp family. Allows retrofitting of lamp into existing applications with mounting holes larger than a diameter of 83mm.



Part Number	9GD 980 696-001	9GD 980 696-007 (Pack of 50)	90MM O.D
	9GD 980 696-201	9GD 980 696-207 (Pack of 50)	95MM O.D
	9GD 980 696-401	9GD 980 696-407 (Pack of 50)	100MM O.D



Part Number	8HG 980 727-001	15MM
-------------	-----------------	------

LED Combination Trailer Lamp Spacer



LED Light Bar Accessories

Spare brackets to suit the LED Light Bar 350, LED Light Bar 470 and the LED BL350 Work Lamps.



P/N 8HG 958 128-811
Double stainless steel mounting feet (One pair)



P/N 8HG 958 139-071
Single spare end HD bracket kit (For one end)



P/N 8HG 958 053-801
Single spare plastic bracket kit

DOUBLE STAINLESS STEEL MOUNTING FEET	
Part Number	8HG 958 128-811
Includes:	Double stainless steel mounting feet (One pair)

SINGLE SPARE END HD BRACKET KIT (NO MOUNTING FEET)		
Part Number	8HG 958 139-071	
Kit Includes:	1 x End adaptor 1 x Friction washer 1 x End clamp	1 x Screw cap 1 x Stainless steel M8 x 20mm cap screw 1 x Stainless steel M8 nylon lock nut

SINGLE SPARE PLASTIC BRACKET KIT		
Part Number	8HG 958 053-801	
Kit Includes:	2 x Plastic mounting feet 1 x C-Clip 1 x Bolt anchor	1 x Stainless steel M6 nylon lock nut 1 x Stainless steel M6 x 70mm cap screw 1 x Stainless steel M6 washer



Disassembled view

Number Plate Lamp Accessories

Mounting kit includes a housing, cover, spacer and extended screw bosses suitable for mounting the lamp for ECE compliance. One mounting kit is required per lamp.



P/N 8HG 959 647-001

Part Number	MOUNTING KIT		
	8HG 959 647-001		
	SCREW CAPS (PACK OF 20)		
	9HD 959 182-037 (Black)	9HD 959 182-007 (Clear)	PLASTIC



9HD 959 182-007 9HD 959 182-037

Surface Mount Strip Lamp - Screw Caps



P/N 9HD 980 885-018

P/N 9HD 980 885-008

P/N 9HD 980 885-108

SURFACE MOUNT STRIP LAMP SCREW CAPS		
Part Number	Colour	Quantity
9HD 980 885-018	CHARCOAL	PACK OF 4
9HD 980 885-008	WHITE	
9HD 980 885-108	CHROME PLATED	

ACCESSORIES

Wide and Narrow Rim Rectangular Lamp Screw Caps

Part Number	SCREW CAPS (PACK OF 20)		
	9HD 959 182-007 (Clear)	9HD 959 182-017 (Amber)	PLASTIC
	9HD 959 182-027 (Red)	9HD 959 182-037 (Black)	



9HD 959 182-037 9HD 959 182-027 9HD 959 182-007



P/N 9HD 959 182-017

Wide Rim Rectangular Courtesy Lamp Rims

Part Number	RIMS (SINGLE)		
	9AB 959 686-012 (White)	9AB 959 686-002 (Black)	PLASTIC
	9AB 959 685-001 (Polished)	9AB 959 685-021 (Gold Plated)	316 STAINLESS STEEL
	9AB 959 685-061 (Satin Chrome Plated)		



9AB 959 685-001 9AB 959 685-021 9AB 959 685-061

Screw caps for the wide rim rectangular courtesy lamp family. Two screw caps are required per lamp.



P/N 9AB 959 686-012



P/N 9AB 959 686-002

Marker and Courtesy Lamp Gaskets

Part Number	SEALS (PACK OF 4)	
	9GD 959 515-127	NARROW RIM
	9GD 959 515-207	CURVED SEAL
	9GD 959 517-007	WIDE RIM
	1X2 SPACER	
	9XD 160 867-007	PLASTIC



9GD 959 515-207 9GD 959 517-007 9XD 160 867-007

Gaskets for narrow rim (22mm) and wide rim (29mm) LED courtesy lamps. Curved mount gasket (P/N 9GD 959 515-207) is designed to suit 64mm (2.5") pipes. Flexibility allows this particular gasket to suit a variety of curve radii.



P/N 9GD 959 515-127

Low Profile Step Lamp Accessories

Part Number	CAPS (PACK OF 4)		
	9AB 994 554-037 (Black)	9AB 994 554-017 (White)	PLASTIC
	9AB 994 554-007 (Chrome Plated)	9AB 994 554-027 (Gold Plated)	PLATED PLASTIC
	9AB 994 554-067 (Satin Chrome Plated)		

Lamp covers cannot easily be removed once clipped into place.



9AB 994 554-037 9AB 994 554-017 9AB 994 554-027 9AB 994 554-067

Spare caps for the low profile step lamp family. One cap is required per lamp.



P/N 9AB 994 554-007

Round Courtesy Lamp Accessories

Spare rims and surface mount housings for the round courtesy lamp family. One rim is required per lamp.



P/N 9AB 959 505-201



P/N 8HG 959 993-132

Part Number	RIMS (SINGLE)		
	9AB 959 505-201 (Black)	9AB 959 505-311 (White)	PLASTIC
	9AB 959 505-501 (Polished)	9AB 959 505-521 (Gold Plated)	
	9AB 959 505-561 (Satin Chrome Plated)		316 STAINLESS STEEL



9AB 959 505-561 9AB 959 505-521 9AB 959 505-501 9AB 959 505-311

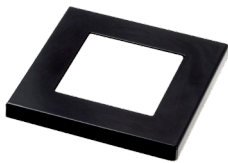
Part Number	SURFACE MOUNT ROUND HOUSING (PACK OF 2)	
	8HG 959 993-122 (Black)	8HG 959 993-132 (White)



8HG 959 993-122

Square Courtesy Lamp Accessories

Spare rims and surface mount housings for the square courtesy lamp family. One rim is required per lamp.

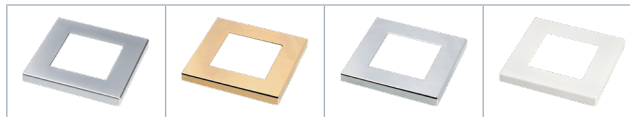


P/N 9AB 980 585-201



P/N 8HG 959 993-541

Part Number	RIMS (SINGLE)		PLASTIC
	9AB 980 585-201 (Black)	9AB 980 585-311 (White)	
	9AB 980 585-011 (Chrome Plated)	9AB 980 585-021 (Gold Plated)	
	9AB 980 585-031 (Satin Chrome Plated)		



9AB 980 585-031 9AB 980 585-021 9AB 980 585-011 9AB 980 585-311

Part Number	SURFACE MOUNT SQUARE HOUSING (PACK OF 2)	
	8HG 959 993-601 (Black)	8HG 959 993-541 (White)



8HG 959 993-601

LED Interior Strip or CHMSL Lamp Accessories

Spare seals and screw caps for the narrow and wide rim 1x12 lamp family. One seal, and two screw caps are required per lamp.



P/N 9GD 959 155-507



P/N 9HD 959 182-007

Part Number	SEALS (PACK OF 10)		PLASTIC
	9GD 959 155-107 (Narrow Rim)	9GD 959 155-507 (Wide Rim)	
	SCREW CAPS (PACK OF 20)		
	9HD 959 182-037 (Black)	9HD 959 182-007 (Clear)	



9GD 959 155-107 (Narrow rim) 9HD 959 182-037

1FJ 958 040-001.....	16	2BA 959 822-611.....	28	2JA 958 109-021.....	85	2JA 959 820-401.....	82
1FJ 958 040-051.....	16	2BA 959 932-011.....	37	2JA 958 109-111.....	85	2JA 959 820-421.....	82
1FJ 958 040-072.....	17	2BA 959 932-031.....	37	2JA 958 109-121.....	85	2JA 959 820-501.....	82
1FJ 958 040-082.....	17	2BA 959 932-041.....	37	2JA 958 109-511.....	85	2JA 959 820-551.....	82
1FJ 958 130-011.....	18	2BA 959 932-051.....	37	2JA 958 109-521.....	85	2JA 959 820-701.....	82
1FJ 958 130-111.....	18	2BA 959 932-071.....	37	2JA 958 109-611.....	85	2JA 959 820-721.....	82
1GA 958 060-011.....	73	2BA 959 932-081.....	37	2JA 958 109-621.....	85	2JA 959 821-501.....	82
1GA 958 060-111.....	73	2BA 959 932-401.....	55	2JA 958 110-011.....	85	2JA 959 821-521.....	82
1GA 958 060-201.....	73	2BA 959 932-411.....	55	2JA 958 110-021.....	85	2JA 959 822-501.....	82
1GA 958 060-401.....	73	2BA 959 932-421.....	55	2JA 958 110-111.....	85	2JA 959 822-521.....	82
1GA 958 060-501.....	73	2BA 959 932-511.....	38	2JA 958 110-121.....	85	2JA 959 950-011.....	82
1GA 958 060-601.....	73	2BA 959 932-531.....	38	2JA 958 110-511.....	85	2JA 959 950-021.....	82
1GA 980 573-001.....	78	2BA 959 932-541.....	38	2JA 958 110-521.....	85	2JA 959 950-551.....	82
1GA 980 573-101.....	78	2BA 959 932-551.....	38	2JA 958 110-611.....	85	2JA 959 950-561.....	82
1GA 980 573-301.....	78	2BA 959 932-571.....	38	2JA 958 110-621.....	85	2JA 980 596-002.....	93
1GA 980 670-231.....	79	2BA 959 932-581.....	38	2JA 958 121-001.....	87	2JA 980 596-102.....	93
1GA 980 670-251.....	79	2BA 959 932-801.....	55	2JA 958 121-011.....	87	2JA 980 597-002.....	93
1GA 980 670-331.....	79	2BA 959 932-831.....	55	2JA 958 121-101.....	87	2JA 980 597-102.....	93
1GA 980 670-382.....	79	2BA 959 932-841.....	55	2JA 958 121-111.....	87	2JA 980 604-031.....	92
1GA 980 670-411.....	79	2BA 980 607-001.....	10, 30	2JA 958 121-401.....	87	2JA 980 608-011.....	90
1GA 980 670-622.....	79	2BA 980 607-201.....	30	2JA 958 121-411.....	87	2JA 980 629-001.....	92
1GA 980 740-021.....	76	2BA 980 607-501.....	30	2JA 958 121-501.....	87	2JA 980 629-501.....	92
1GA 980 740-221.....	76	2BA 980 607-701.....	30	2JA 958 121-511.....	87	2JA 980 630-001.....	83
1GA 980 740-251.....	76	2BA 980 888-011.....	24	2JA 958 123-001.....	87	2JA 980 630-011.....	83
1GA 980 740-321.....	76	2BA 980 888-211.....	24	2JA 958 123-101.....	87	2JA 980 630-101.....	83
1GA 980 740-511.....	76	2BA 980 888-311.....	24	2JA 958 123-401.....	87	2JA 980 630-111.....	83
1GA 980 740-601.....	76	2BA 980 888-411.....	24	2JA 958 123-501.....	87	2JA 980 630-501.....	83
1GA 980 950-031.....	77	2BA 980 888-511.....	24	2JA 958 124-001.....	86	2JA 980 630-511.....	83
1GA 980 950-041.....	77	2BA 980 888-611.....	24	2JA 958 124-101.....	86	2JA 980 630-601.....	83
1GA 980 950-231.....	77	2BE 959 932-131.....	37	2JA 958 124-401.....	86	2JA 980 630-611.....	83
1GA 980 950-331.....	77	2BE 959 932-151.....	10, 37	2JA 958 124-501.....	86	2JA 980 631-501.....	83
1GJ 011 872-221.....	72	2BE 959 932-161.....	37	2JA 959 037-201.....	91	2JA 980 631-511.....	83
1GJ 011 872-231.....	72	2BE 980 690-001.....	20	2JA 959 037-211.....	91	2JA 980 631-601.....	83
1GJ 011 872-241.....	72	2BE 980 690-101.....	20	2JA 959 037-301.....	91	2JA 980 631-611.....	83
1GJ 958 040-501.....	74	2BE 980 690-201.....	20	2JA 959 037-311.....	91	2JA 980 681-011.....	88
1GJ 958 040-551.....	74	2BE 980 690-301.....	20	2JA 959 037-401.....	91	2JA 980 681-111.....	88
1GJ 958 040-601.....	74	2BE 980 690-307.....	20	2JA 959 037-411.....	91	2JA 980 681-511.....	88
1GJ 958 084-001.....	75	2BE 980 691-001.....	20	2JA 959 037-501.....	91	2JA 980 681-611.....	88
1GJ 958 084-011.....	75	2BE 980 691-101.....	20	2JA 959 037-511.....	91	2JA 980 820-001.....	84
1GJ 958 084-101.....	75	2BE 980 691-301.....	20	2JA 959 073-001.....	89	2JA 980 820-011.....	84
1GJ 958 084-111.....	75	2BE 980 691-307.....	20	2JA 959 073-007.....	89	2JA 980 820-101.....	84
1GJ 958 084-201.....	75	2BM 980 990-121.....	40	2JA 959 073-201.....	89	2JA 980 820-111.....	84
1GJ 958 084-211.....	75	2BM 980 990-127.....	40	2JA 959 073-207.....	89	2JA 980 828-001.....	84
2BA 959 011-001.....	22	2DA 959 071-077.....	43, 60	2JA 959 076-501.....	88	2JA 980 828-011.....	84
2BA 959 011-007.....	22	2DA 959 071-277.....	43, 60	2JA 959 076-507.....	88	2JA 980 828-101.....	84
2BA 959 011-301.....	10, 23	2DA 959 071-577.....	43, 60	2JA 959 076-601.....	88	2JA 980 828-111.....	84
2BA 959 011-307.....	23	2DA 959 071-757.....	43, 60	2JA 959 076-607.....	88	2JA 980 879-011.....	86
2BA 959 021-601.....	29	2DA 959 071-777.....	43, 60	2JA 959 596-002.....	93	2JA 980 879-111.....	86
2BA 959 021-611.....	29	2DA 959 474-xx7.....	61	2JA 959 596-102.....	93	2JA 980 879-201.....	86
2BA 959 070-301.....	56	2DA 959 580-151.....	43, 60	2JA 959 599-002.....	93	2JA 980 879-301.....	86
2BA 959 070-307.....	56	2DA 959 580-551.....	43, 60	2JA 959 599-102.....	93	2JA 980 881-012.....	87
2BA 959 070-331.....	57	2DA 980 887-311.....	25	2JA 959 700-102.....	90	2JA 980 881-112.....	87
2BA 959 070-337.....	57	2DA 980 887-411.....	25	2JA 959 820-311.....	82	2JA 980 881-212.....	87
2BA 959 822-601.....	10, 28	2JA 958 109-011.....	85	2JA 959 820-331.....	82	2JA 980 881-312.....	87


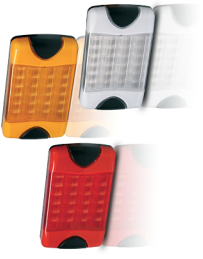




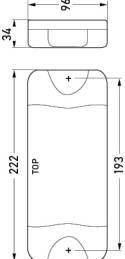
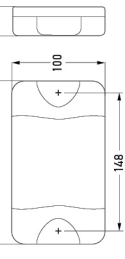
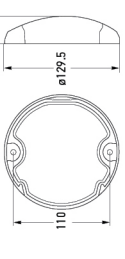
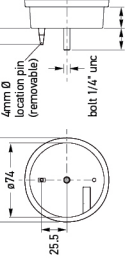
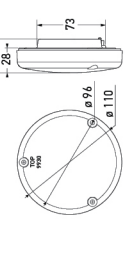
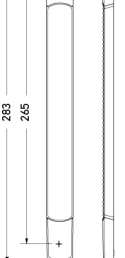
INDEX BY PART NUMBER

2JA 980 881-402.....	87	2PF 959 653-007.....	59	2PT 980 850-851.....	45, 63	2VB 959 050-821.....	35
2JA 980 881-502.....	87	2PF 959 653-107.....	59	2PT 980 860-001.....	44, 62	2VB 980 720-401.....	36
2JA 980 881-602.....	87	2PF 959 653-207.....	59	2PT 980 860-501.....	44, 62	2VB 980 720-407.....	36
2JA 980 881-702.....	87	2PF 959 653-307.....	59	2PT 980 860-801.....	44, 62	2VB 980 720-501.....	36
2JA 980 881-802.....	87	2PF 959 653-507.....	59	2PT 980 860-851.....	44, 62	2VB 980 720-507.....	36
2JA 980 881-902.....	87	2PF 959 653-707.....	59	2PT 980 880-002.....	27	2XA 959 560-401.....	41
2JA 980 940-001.....	84	2PF 959 855-201.....	39	2PT 980 880-102.....	27	2XA 959 560-407.....	41
2JA 980 940-011.....	84	2PF 959 855-207.....	39	2PT 980 880-811.....	27	2XA 959 560-411.....	41
2JA 980 940-101.....	84	2PF 959 855-241.....	39	2PT 980 880-861.....	27	2XA 959 560-417.....	41
2JA 980 940-111.....	84	2PF 959 855-247.....	39	2PT 980 970-021.....	44, 62	2XA 959 657-007.....	59
2JA 980 940-201.....	84	2PF 959 855-251.....	39	2PT 980 970-521.....	44, 62	2XA 959 657-107.....	59
2JA 980 940-211.....	84	2PF 959 855-257.....	39	2PT 980 970-821.....	44, 62	2XA 959 657-207.....	59
2JA 980 940-301.....	84	2PF 980 990-221.....	40	2PT 980 970-871.....	44, 62	2XA 959 657-307.....	59
2JA 980 940-311.....	84	2PF 980 990-227.....	40	2SB 959 010-001.....	22	2XA 959 790-401.....	42
2JA 998 560-007.....	102	2PS 959 660-207.....	58	2SB 959 010-007.....	22	2XA 959 790-407.....	42
2JA 998 560-017.....	102	2PS 959 660-407.....	58	2SB 959 010-301.....	22	2XA 959 790-411.....	42
2JA 998 560-047.....	102	2PS 959 788-002.....	42	2SB 959 010-307.....	22	2XA 959 790-417.....	42
2JA 998 560-057.....	102	2PS 959 788-007.....	42	2SB 959 020-601.....	28	2XA 980 910-041.....	66
2JA 998 560-087.....	102	2PS 959 788-102.....	42	2SB 959 020-611.....	28	2XA 980 910-051.....	66
2JA 998 560-097.....	102	2PS 959 788-107.....	42	2SB 959 060-301.....	56	2XA 980 910-241.....	66
2JA 998 560-107.....	102	2PS 980 868-201.....	39	2SB 959 060-307.....	56	2XA 980 910-261.....	66
2JA 998 560-117.....	102	2PS 980 868-207.....	39	2SB 959 060-331.....	57	2XA 980 910-441.....	66
2JA 998 560-127.....	102	2PS 980 868-211.....	39	2SB 959 060-337.....	57	2XA 980 910-461.....	66
2JA 998 560-157.....	102	2PS 980 868-217.....	39	2SB 959 821-301.....	54	2XA 980 910-641.....	66
2JA 998 560-207.....	102	2PS 980 990-301.....	40	2SB 959 821-311.....	54	2XA 980 910-661.....	66
2JA 998 560-217.....	102	2PS 980 990-307.....	40	2SB 959 821-601.....	28	2XA 980 910-741.....	66
2JA 998 560-227.....	102	2PT 980 670-001.....	48	2SB 959 821-611.....	28	2XA 980 910-761.....	66
2JA 998 560-237.....	102	2PT 980 670-501.....	48	2SB 959 931-801.....	54	2XD 959 010-021.....	67
2JA 998 560-247.....	102	2PT 980 670-551.....	48	2SB 959 931-831.....	54	2XD 959 010-027.....	67
2JA 998 560-307.....	102	2PT 980 670-601.....	49	2SB 959 931-841.....	54	2XD 959 010-711.....	67
2JA 998 560-317.....	102	2PT 980 670-651.....	49	2SB 980 606-001.....	30	2XD 959 010-717.....	67
2JA 998 560-327.....	102	2PT 980 670-801.....	48	2SB 980 606-201.....	30	2XD 959 010-721.....	67
2JA 998 560-337.....	102	2PT 980 670-811.....	48	2SB 980 606-501.....	30	2XD 959 010-727.....	67
2JA 998 560-347.....	102	2PT 980 670-851.....	48	2SB 980 606-701.....	30	2XD 959 011-021.....	67
2KA 959 640-101.....	41	2PT 980 670-861.....	49	2SB 980 887-011.....	25	2XD 959 011-027.....	67
2KA 959 640-102.....	41	2PT 980 670-881.....	48	2SB 980 887-211.....	25	2XD 959 011-401.....	67
2KA 959 640-601.....	35, 41	2PT 980 670-891.....	49	2SD 959 010-201.....	21	2XD 959 011-407.....	67
2KA 959 640-607.....	41	2PT 980 670-901.....	48	2SD 959 010-207.....	21	2XD 959 011-451.....	67
2KA 959 640-611.....	41	2PT 980 670-911.....	49	2SD 959 010-401.....	21	2XD 959 011-457.....	67
2KA 959 640-617.....	41	2PT 980 670-931.....	48	2SD 959 010-407.....	21	2XD 959 011-601.....	67
2NE 959 011-501.....	23	2PT 980 670-941.....	49	2SD 959 050-001.....	35	2XD 959 011-607.....	67
2NE 959 011-507.....	23	2PT 980 680-001.....	46	2SD 959 050-401.....	10, 35	2XD 959 011-651.....	67
2NE 959 821-201.....	29	2PT 980 680-101.....	46	2SD 980 602-211.....	33	2XD 959 011-657.....	67
2NE 959 821-211.....	29	2PT 980 680-501.....	46	2SD 980 613-211.....	33	2XD 959 020-811.....	69
2NE 980 889-501.....	26	2PT 980 680-601.....	46	2SK 980 602-501.....	32	2XD 959 021-811.....	69
2NE 980 889-601.....	26	2PT 980 680-801.....	46	2SK 980 603-503.....	31	2XD 959 037-011.....	68
2PF 959 570-202.....	41	2PT 980 680-821.....	46	2SK 980 603-552.....	31	2XD 959 037-111.....	68
2PF 959 570-207.....	41	2PT 980 680-851.....	46	2SK 980 613-501.....	32	2XD 959 037-611.....	68
2PF 959 570-212.....	41	2PT 980 680-861.....	46	2SK 980 615-001.....	31	2XD 959 037-811.....	68
2PF 959 570-217.....	41	2PT 980 690-601.....	21	2SK 980 615-052.....	31	2XD 959 037-911.....	68
2PF 959 590-202.....	42	2PT 980 691-601.....	21	2VA 980 710-061.....	34	2XD 959 073-601.....	69
2PF 959 590-207.....	42	2PT 980 850-001.....	45, 63	2VA 980 710-301.....	34	2XD 959 073-651.....	69
2PF 959 590-212.....	42	2PT 980 850-501.....	45, 63	2VA 980 720-001.....	36	2XD 959 073-701.....	69
2PF 959 590-217.....	42	2PT 980 850-801.....	45, 63	2VA 980 720-007.....	36	2XD 959 073-751.....	69

2XD 980 911-001.....	66	2XT 959 680-617.....	101	2XT 980 501-797.....	94	2XT 980 508-057.....	95
2XD 980 911-011.....	66	2XT 959 680-627.....	101	2XT 980 502-027.....	95	2XT 980 508-097.....	95
2XD 980 911-201.....	66	2XT 959 680-637.....	101	2XT 980 502-037.....	95	2XT 980 508-227.....	95
2XD 980 911-241.....	66	2XT 959 680-707.....	101	2XT 980 502-047.....	95	2XT 980 508-237.....	95
2XD 980 911-401.....	66	2XT 959 680-717.....	101	2XT 980 502-057.....	95	2XT 980 508-247.....	95
2XD 980 911-441.....	66	2XT 959 680-727.....	101	2XT 980 502-097.....	95	2XT 980 508-257.....	95
2XD 980 911-601.....	66	2XT 959 680-737.....	101	2XT 980 502-227.....	95	2XT 980 508-297.....	95
2XD 980 911-641.....	66	2XT 959 680-807.....	101	2XT 980 502-237.....	95	2XT 980 508-427.....	95
2XD 980 911-701.....	66	2XT 959 680-817.....	101	2XT 980 502-247.....	95	2XT 980 508-437.....	95
2XD 980 911-741.....	66	2XT 959 680-847.....	101	2XT 980 502-257.....	95	2XT 980 508-447.....	95
2XS 959 855-401.....	39	2XT 959 680-857.....	101	2XT 980 502-297.....	95	2XT 980 508-457.....	95
2XS 959 855-407.....	39	2XT 959 680-907.....	101	2XT 980 502-427.....	95	2XT 980 508-497.....	95
2XS 959 855-441.....	39	2XT 959 680-917.....	101	2XT 980 502-437.....	95	2XT 980 508-627.....	95
2XS 959 855-447.....	39	2XT 959 680-927.....	101	2XT 980 502-447.....	95	2XT 980 508-637.....	95
2XS 959 855-451.....	39	2XT 959 680-937.....	101	2XT 980 502-457.....	95	2XT 980 508-647.....	95
2XS 959 855-457.....	39	2XT 980 500-027.....	94	2XT 980 502-497.....	95	2XT 980 508-657.....	95
2XS 980 990-621.....	40	2XT 980 500-037.....	94	2XT 980 503-027.....	95	2XT 980 508-697.....	95
2XS 980 990-627.....	40	2XT 980 500-047.....	94	2XT 980 503-037.....	95	2XT 980 580-037.....	96
2XT 959 510-007.....	98	2XT 980 500-057.....	94	2XT 980 503-047.....	95	2XT 980 580-047.....	96
2XT 959 510-017.....	98	2XT 980 500-097.....	94	2XT 980 503-057.....	95	2XT 980 580-057.....	96
2XT 959 510-057.....	98	2XT 980 500-227.....	94	2XT 980 503-097.....	95	2XT 980 580-067.....	96
2XT 959 510-067.....	98	2XT 980 500-237.....	94	2XT 980 503-227.....	95	2XT 980 580-077.....	96
2XT 959 510-157.....	98	2XT 980 500-247.....	94	2XT 980 503-237.....	95	2XT 980 580-237.....	96
2XT 959 510-257.....	98	2XT 980 500-257.....	94	2XT 980 503-247.....	95	2XT 980 580-247.....	96
2XT 959 510-307.....	98	2XT 980 500-297.....	94	2XT 980 503-257.....	95	2XT 980 580-257.....	96
2XT 959 510-317.....	98	2XT 980 500-527.....	94	2XT 980 503-297.....	95	2XT 980 580-267.....	96
2XT 959 510-337.....	98	2XT 980 500-537.....	94	2XT 980 503-427.....	95	2XT 980 580-277.....	96
2XT 959 510-357.....	98	2XT 980 500-547.....	94	2XT 980 503-437.....	95	2XT 980 580-537.....	96
2XT 959 510-427.....	98	2XT 980 500-557.....	94	2XT 980 503-447.....	95	2XT 980 580-547.....	96
2XT 959 510-457.....	98	2XT 980 500-597.....	94	2XT 980 503-457.....	95	2XT 980 580-557.....	96
2XT 959 510-507.....	98	2XT 980 500-727.....	94	2XT 980 503-497.....	95	2XT 980 580-567.....	96
2XT 959 510-517.....	98	2XT 980 500-737.....	94	2XT 980 507-027.....	95	2XT 980 580-577.....	96
2XT 959 510-557.....	98	2XT 980 500-747.....	94	2XT 980 507-037.....	95	2XT 980 580-737.....	96
2XT 959 510-567.....	98	2XT 980 500-757.....	94	2XT 980 507-047.....	95	2XT 980 580-747.....	96
2XT 959 510-627.....	98	2XT 980 500-797.....	94	2XT 980 507-057.....	95	2XT 980 580-757.....	96
2XT 959 510-657.....	98	2XT 980 501-027.....	94	2XT 980 507-097.....	95	2XT 980 580-767.....	96
2XT 959 510-707.....	98	2XT 980 501-037.....	94	2XT 980 507-227.....	95	2XT 980 580-777.....	96
2XT 959 510-717.....	98	2XT 980 501-047.....	94	2XT 980 507-237.....	95	2XT 980 581-037.....	96
2XT 959 510-757.....	98	2XT 980 501-057.....	94	2XT 980 507-247.....	95	2XT 980 581-047.....	96
2XT 959 510-767.....	98	2XT 980 501-097.....	94	2XT 980 507-257.....	95	2XT 980 581-057.....	96
2XT 959 510-907.....	98	2XT 980 501-227.....	94	2XT 980 507-307.....	95	2XT 980 581-067.....	96
2XT 959 510-937.....	98	2XT 980 501-237.....	94	2XT 980 507-427.....	95	2XT 980 581-077.....	96
2XT 959 630-107.....	103	2XT 980 501-247.....	94	2XT 980 507-437.....	95	2XT 980 581-237.....	96
2XT 959 630-157.....	103	2XT 980 501-257.....	94	2XT 980 507-447.....	95	2XT 980 581-247.....	96
2XT 959 630-257.....	103	2XT 980 501-297.....	94	2XT 980 507-457.....	95	2XT 980 581-257.....	96
2XT 959 630-307.....	103	2XT 980 501-527.....	94	2XT 980 507-497.....	95	2XT 980 581-267.....	96
2XT 959 630-357.....	103	2XT 980 501-537.....	94	2XT 980 507-627.....	95	2XT 980 581-277.....	96
2XT 959 630-457.....	103	2XT 980 501-547.....	94	2XT 980 507-637.....	95	2XT 980 581-537.....	96
2XT 959 630-557.....	103	2XT 980 501-557.....	94	2XT 980 507-647.....	95	2XT 980 581-547.....	96
2XT 959 680-407.....	101	2XT 980 501-597.....	94	2XT 980 507-657.....	95	2XT 980 581-557.....	96
2XT 959 680-417.....	101	2XT 980 501-727.....	94	2XT 980 507-697.....	95	2XT 980 581-567.....	96
2XT 959 680-427.....	101	2XT 980 501-737.....	94	2XT 980 508-027.....	95	2XT 980 581-577.....	96
2XT 959 680-437.....	101	2XT 980 501-747.....	94	2XT 980 508-037.....	95	2XT 980 581-737.....	96
2XT 959 680-607.....	101	2XT 980 501-757.....	94	2XT 980 508-047.....	95	2XT 980 581-747.....	96

2XT 980 581-757.....	96	2XT 980 588-047.....	97	8HG 958 053-801.....	110	9GD 959 515-127.....	111
2XT 980 581-767.....	96	2XT 980 588-057.....	97	8HG 958 128-811.....	110	9GD 959 515-207.....	111
2XT 980 581-777.....	96	2XT 980 588-067.....	97	8HG 958 139-071.....	110	9GD 959 517-007.....	111
2XT 980 582-027.....	97	2XT 980 588-077.....	97	8HG 958 139-841.....	19	9GD 980 696-001.....	109
2XT 980 582-037.....	97	2XT 980 588-237.....	97	8HG 958 139-851.....	19	9GD 980 696-007.....	109
2XT 980 582-047.....	97	2XT 980 588-247.....	97	8HG 959 571-011.....	108	9GD 980 696-201.....	109
2XT 980 582-057.....	97	2XT 980 588-257.....	97	8HG 959 647-001.....	41, 110	9GD 980 696-207.....	109
2XT 980 582-097.....	97	2XT 980 588-267.....	97	8HG 959 952-002.....	109	9GD 980 696-401.....	109
2XT 980 582-237.....	97	2XT 980 588-277.....	97	8HG 959 952-012.....	109	9GD 980 696-407.....	109
2XT 980 582-247.....	97	2XT 980 588-437.....	97	8HG 959 952-022.....	109	9GD 980 867-007.....	107
2XT 980 582-257.....	97	2XT 980 588-447.....	97	8HG 959 993-122.....	112	9GD 980 867-507.....	107
2XT 980 582-277.....	97	2XT 980 588-457.....	97	8HG 959 993-132.....	112	9HD 959 027-007.....	109
2XT 980 582-297.....	97	2XT 980 588-467.....	97	8HG 959 993-541.....	112	9HD 959 027-017.....	109
2XT 980 582-437.....	97	2XT 980 588-477.....	97	8HG 959 993-601.....	112	9HD 959 065-007.....	106
2XT 980 582-447.....	97	2XT 980 588-637.....	97	8HG 980 727-001.....	109	9HD 959 065-017.....	106
2XT 980 582-457.....	97	2XT 980 588-647.....	97	8HG 980 854-101.....	45, 63	9HD 959 065-037.....	106
2XT 980 582-467.....	97	2XT 980 588-657.....	97	8HG 980 864-101.....	44, 62	9HD 959 065-047.....	106
2XT 980 582-477.....	97	2XT 980 588-667.....	97	8HG 980 875-101.....	44, 62	9HD 959 065-057.....	106
2XT 980 583-027.....	97	2XT 980 588-677.....	97	8KB 958 304-001.....	72	9HD 959 065-067.....	106
2XT 980 583-037.....	97	2XT 980 855-117.....	99	8RA 002 020-001.....	35	9HD 959 065-077.....	106
2XT 980 583-047.....	97	2XT 980 855-167.....	99	9AB 959 505-201.....	112	9HD 959 182-007.....	110, 111, 112
2XT 980 583-057.....	97	2XT 980 855-267.....	99	9AB 959 505-311.....	112	9HD 959 182-017.....	111
2XT 980 583-097.....	97	2XT 980 855-347.....	99	9AB 959 505-501.....	112	9HD 959 182-027.....	111
2XT 980 583-237.....	97	2XT 980 855-417.....	99	9AB 959 505-521.....	112	9HD 959 182-037.....	110, 111, 112
2XT 980 583-247.....	97	2XT 980 855-517.....	99	9AB 959 505-561.....	112	9HD 980 712-008.....	106
2XT 980 583-257.....	97	2ZR 959 010-501.....	23	9AB 959 685-001.....	107, 111	9HD 980 712-018.....	106
2XT 980 583-277.....	97	2ZR 959 010-507.....	23	9AB 959 685-021.....	107, 111	9HD 980 712-038.....	106
2XT 980 583-297.....	97	2ZR 959 820-201.....	54	9AB 959 685-061.....	107, 111	9HD 980 712-048.....	106
2XT 980 583-437.....	97	2ZR 959 820-211.....	54	9AB 959 685-201.....	39, 107	9HD 980 712-058.....	106
2XT 980 583-447.....	97	2ZR 959 820-601.....	29	9AB 959 686-002.....	107, 111	9HD 980 712-068.....	106
2XT 980 583-457.....	97	2ZR 959 820-611.....	29	9AB 959 686-012.....	107, 111	9HD 980 712-078.....	106
2XT 980 583-467.....	97	2ZR 959 930-801.....	55	9AB 980 585-011.....	112	9HD 980 858-008.....	107
2XT 980 583-477.....	97	2ZR 959 930-831.....	55	9AB 980 585-021.....	112	9HD 980 858-018.....	39, 107
2XT 980 587-037.....	97	2ZR 959 930-841.....	55	9AB 980 585-031.....	112	9HD 980 858-028.....	107
2XT 980 587-047.....	97	2ZR 980 605-001.....	30	9AB 980 585-201.....	112	9HD 980 858-038.....	107
2XT 980 587-057.....	97	2ZR 980 605-201.....	30	9AB 980 585-311.....	112	9HD 980 858-048.....	107
2XT 980 587-067.....	97	2ZR 980 605-501.....	30	9AB 994 554-007.....	111	9HD 980 858-058.....	107
2XT 980 587-077.....	97	2ZR 980 605-701.....	30	9AB 994 554-017.....	111	9HD 980 858-068.....	107
2XT 980 587-237.....	97	2ZR 980 889-011.....	26	9AB 994 554-027.....	111	9HD 980 858-078.....	107
2XT 980 587-247.....	97	2ZR 980 889-111.....	26	9AB 994 554-037.....	111	9HD 980 885-008.....	86, 110
2XT 980 587-257.....	97	2ZR 980 889-211.....	26	9AB 994 554-067.....	111	9HD 980 885-018.....	86, 110
2XT 980 587-267.....	97	2ZR 980 889-311.....	26	9BG 959 565-007.....	58, 103, 108	9HD 980 885-108.....	86, 110
2XT 980 587-277.....	97	4DM 009 492-001.....	11	9BG 959 565-017.....	58, 103, 108	9NH 959 059-007.....	106
2XT 980 587-437.....	97	4DN 009 492-101.....	11	9BG 959 565-037.....	58, 103, 108	9NH 959 028-017.....	109
2XT 980 587-447.....	97	4DW 009 492-011.....	11	9BG 959 565-047.....	58, 103, 108	9XD 160 867-007.....	111
2XT 980 587-457.....	97	4DW 009 492-111.....	11	9BG 959 565-057.....	58, 103, 108		
2XT 980 587-467.....	97	5DF 980 816-001.....	27, 44, 45, 62, 63	9BG 959 565-067.....	58, 103, 108		
2XT 980 587-477.....	97	5DF 980 816-051.....	44, 45, 62, 63	9BG 959 565-077.....	58, 103, 108		
2XT 980 587-637.....	97	5DF 980 816-501.....	27, 44, 45, 62, 63	9BG 959 565-407.....	58, 103, 108		
2XT 980 587-647.....	97	5DF 980 816-551.....	44, 45, 62, 63	9BG 980 996-002.....	40, 108		
2XT 980 587-657.....	97	5DS 009 552-011.....	11	9BG 980 996-102.....	40, 108		
2XT 980 587-667.....	97	5DS 009 602-001.....	11	9GD 958 028-001.....	107		
2XT 980 587-677.....	97	8HG 958 000-011.....	86, 87	9GD 959 155-107.....	112		
2XT 980 588-037.....	97	8HG 958 000-021.....	86	9GD 959 155-507.....	112		

HELLA NEW ZEALAND LED COMMERCIAL TRANSPORT LAMPS

	DURALED COMBI	DURALED SERIES	EUROLED SERIES	83MM ROUND LED LAMPS	110MM ROUND LED LAMPS	SLIM SURFACE MOUNT	
ECE Approved Functions	 Stop/Rear Position/Indicator Stop/Rear Position/Indicator/Reverse	 Stop/Rear Position Indicator Reverse	 Stop/Rear Position Indicator Reverse Rear Fog	 Stop/Rear Position Indicator Rear Direction Indicator Reverse Rear Fog DRL/Front Direction Indicator/Position	 Front Direction Indicator/ Front Position Front Direction Indicator	 Front Direction Indicator Rear Direction Indicator Stop/Rear Position Auxiliary stop Rear Fog Reverse DRL/Front Position	
SAE Approved Functions	-	Stop/Tail/Rear Turn Signal Reverse	Stop/Tail/Rear Turn Signal Reverse	-	Stop/Tail/Rear Turn Signal Reverse Front Turn Signal	-	
GGVS Approved	Yes	Yes	Yes	Yes	Yes	No	
Voltage	Multivolt	Multivolt (12V only SAE version also available)	Multivolt (24V only ECE version also available)	Multivolt (12 or 24V ECE version also available)	Multivolt	12 or 24V only	
Power Consumption	Less than 5W	Less than 8W	Less than 5W	Less than 5W	Less than 5W	Less than 3W	
HELLA Compatibility Solution	Available with or without HCS	Available with or without HCS	Available with or without HCS	Available with or without HCS	Available with or without HCS	-	
Electrical Protection	Reverse Polarity and 5000 watt Transient Voltage Suppressor (TVS)	Reverse Polarity and 5000 watt Transient Voltage Suppressor (TVS)	Reverse Polarity and 1500 watt Transient Voltage Suppressor (TVS)	Reverse Polarity and 5000 watt Transient Voltage Suppressor (TVS)	Reverse Polarity and 1500 watt Transient Voltage Suppressor (TVS)	Reverse Polarity Protection	
Enclosure Protection	IP 6K6 & IP 6K7 or higher	IP 6K6 & IP 6K7	IP 6K6 & IP 6K7	IP 6K7 & IP 6K9K	IP 6K6 & IP 6K7	IP 6K7 & IP 6K9K	
Cable Length	2.5m or 6m	2.5m	2.5m	2.5m	200mm	2.5m - Stop/Tail 0.3	
Mounting	Surface	Surface	Surface	Recess	Recess/Surface	Surface	
Dimensions in mm	 222 TOP, 193, 96, 34	 177, 148, 100, 31	 110, 29.5, 129.5	 68.0, 67.6, 25.5, 10, 41, 6mm Ø for pin (removable), bolt 1/4" UNC, 22, 21	 73, 28, 35, 110, 96	 283, 265, 11	

HELLA-New Zealand Limited

81-83 Ben Lomond Crescent

Pakuranga, Auckland 2010

Tel. +64 9 577-0000

Fax +64 9 576-2476

www.hella.co.nz

© HELLA-New Zealand Ltd

S-HNZINTCAT 11.16

Subject to technical and price modifications

Printed in Korea