

Contents

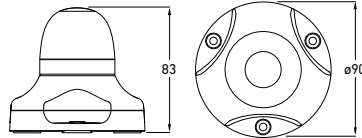
LED Signal Warning Lamps

360° Warning Lamps.....	66
83mm Round LED Lamps.....	67
DuraLED Multi-flash Signal Warning Lamps.....	68
EuroLED Series.....	69
Strip Signal Warning Lamps.....	69



LED 360° Multi-flash Warning Lamp

Multi-purpose LED 360° warning lamp with clear Grilamid® lens, available in four signal colours and white. This range of warning lamps has 10 programmable flash modes, and can be synchronised to flash alternately or in unison.



Part Number	2XD 980 911-001 (White)	2XD 980 911-201 (Green)	BLACK HOUSING	
	2XD 980 911-401 (Red)	2XD 980 911-601 (Amber)		
	2XD 980 911-701 (Blue)			
	2XD 980 911-011 (White)			WHITE HOUSING
	2XD 980 911-241 (Green)			GREEN HOUSING
	2XD 980 911-441 (Red)			RED HOUSING
	2XD 980 911-641 (Amber)			AMBER HOUSING
	2XD 980 911-741 (Blue)			BLUE HOUSING

Mounting	Suitable for upright mounting with three point mount.
Voltage	Multivolt for optimum brightness at input voltages from 9 to 33 volts.
Power Consumption	5W continuous (less in flashing modes)
Protection	Reverse polarity, spike and over voltage protection. IP 67 (Protection against dust and temporary water immersion)
Cable Length	Pre-wired with 2.5m of sheathed multi-core cable.
Approval Markings	Ⓔ4 10R 04-2914

The above lamps are not ECE compliant.

LED SIGNAL WARNING LAMPS



2XD 980 911-201 2XD 980 911-401 2XD 980 911-601

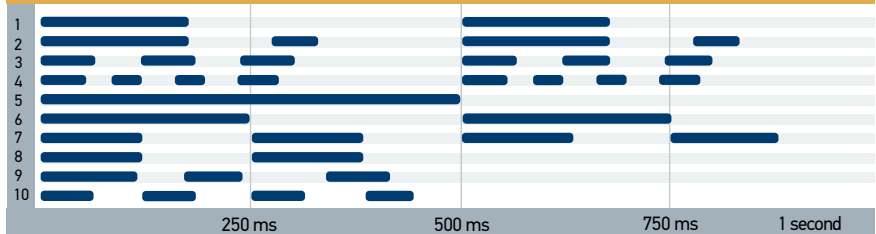


2XD 980 911-701 2XD 980 911-011 2XD 980 911-241



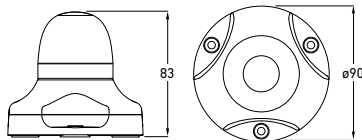
2XD 980 911-441 2XD 980 911-641 2XD 980 911-741

SELECTABLE FLASH PATTERNS - HELLA MULTI-FLASH



LED 360° Warning Lamp

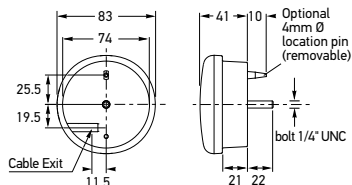
Multi-purpose LED 360° warning lamp available in four signal colours and white.



Part Number	2XA 980 910-041 (White)	2XA 980 910-241 (Green)	BLACK HOUSING	
	2XA 980 910-441 (Red)	2XA 980 910-641 (Amber)		
	2XA 980 910-741 (Blue)			
	2XA 980 910-051 (White)			WHITE HOUSING
	2XA 980 910-261 (Green)			GREEN HOUSING
	2XA 980 910-461 (Red)			RED HOUSING
	2XA 980 910-661 (Amber)			AMBER HOUSING
	2XA 980 910-761 (Blue)			BLUE HOUSING

Power Consumption	5W continuous.
Other specifications	as per 2XD 980 911-xxx

LED SIGNAL WARNING LAMPS



83mm Round LED Multi-flash Signal Lamp

83mm diameter round LED signal lamp with single bolt mount for emergency vehicles. This range of warning lamps has 10 programmable flash modes, and can be synchronised to flash alternately or in unison.

Part Number	2XD 959 011-401	2XD 959 011-407 (Pack of 10)	RED
	2XD 959 011-451	2XD 959 011-457 (Pack of 10)	AMBER
	2XD 959 011-601	2XD 959 011-607 (Pack of 10)	BLUE
	2XD 959 011-651	2XD 959 011-657 (Pack of 10)	GREEN

Mounting	Single bolt 1/4" Stainless UNC thread. Nut and washer supplied.
Voltage	Multivolt for optimum brightness at input voltages from 9 to 33 volts.
Power Consumption	6W continuous (less in flashing modes)
Protection	Reverse polarity, spike and over voltage protection. IP 6K7 (Protection against dust and temporary water immersion) IP 6K9K (Protection against dust and high-pressure/steam jet cleaning)
Cable Length	Pre-wired with 2.5m of sheathed multi-core cable.
Approval Markings	E4 10R 04-2904

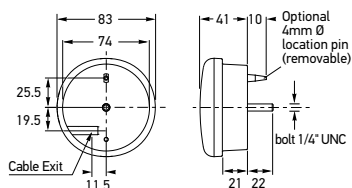
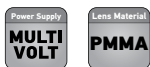
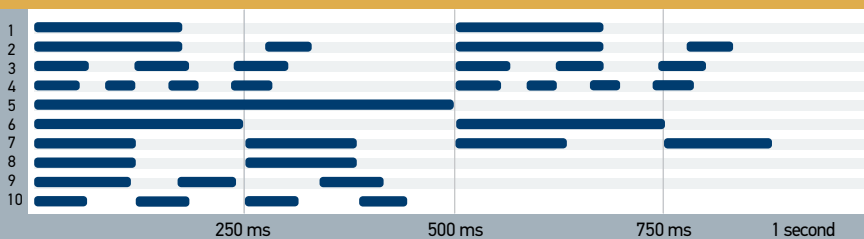
The above lamps are not ECE compliant



2XD 959 011-451 2XD 959 011-601 2XD 959 011-651

LED SIGNAL WARNING LAMPS

SELECTABLE FLASH PATTERNS - HELLA MULTI-FLASH



83mm Round LED Signal Lamp

83mm diameter round LED signal lamp with single bolt mount for emergency vehicles.

Part Number	2XD 959 010-021	2XD 959 010-027 (Pack of 10)	RED
	2XD 959 011-021	2XD 959 011-027 (Pack of 10)	AMBER
	2XD 959 010-711	2XD 959 010-717 (Pack of 10)	BLUE
	2XD 959 010-721	2XD 959 010-727 (Pack of 10)	GREEN

Mounting	Single bolt 1/4" Stainless UNC thread. Nut and washer supplied.
Voltage	Multivolt for optimum brightness at input voltages from 9 to 33 volts.
Power Consumption	6W
Protection	Reverse polarity, spike and over voltage protection. IP 6K7 (Protection against dust and temporary water immersion) IP 6K9K (Protection against dust and high-pressure/steam jet cleaning)
Cable Length	Pre-wired with 2.5m of sheathed multi-core cable.
Approval Markings	E4 10R 04-2741

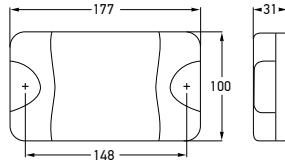
The above lamps are not ECE compliant



2XD 959 011-021 2XD 959 010-711 2XD 959 010-721

DuraLED Multi-flash Signal Warning Lamp

Multivolt warning lamp for emergency vehicles. This range of warning lamps has 10 programmable flash modes, and can be synchronised to flash alternately or in unison.



Part Number	2XD 959 037-011	RED
	2XD 959 037-111	AMBER
	2XD 959 037-611	BLUE
	2XD 959 037-811	GREEN
	2XD 959 037-911	WHITE

Mounting	Two hole surface mount with mounting bushes supplied.
Voltage	Multivolt for optimum brightness at input voltages from 9 to 33 volts.
Power Consumption	9W continuous, (less in flashing modes)
Protection	Reverse polarity and 5000 watt Transient Voltage Suppressor (TVS) IP 6K6 (Protection against dust and high pressure water jets) IP 6K7 (Protection against dust and temporary water immersion)
Cable Length	Pre-wired with 2.5m of sheathed multi-core cable.
Approval Markings	E4 10R 04-2893 SAE 5595 Compliant. Class W-1 (red and amber versions)

The above lamps are not ECE compliant.

LED SIGNAL WARNING LAMPS



2XD 959 037-111

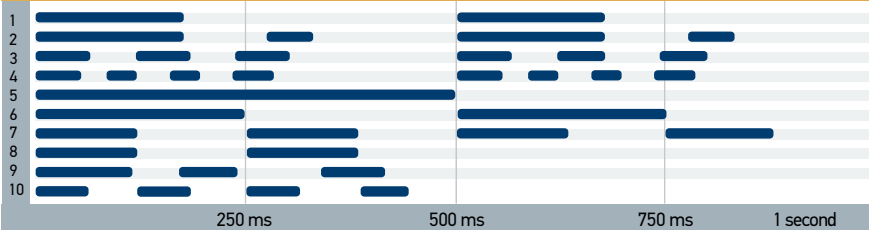
2XD 959 037-611



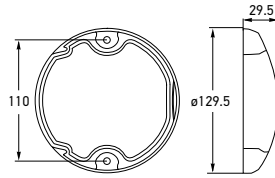
2XD 959 037-811

2XD 959 037-911

SELECTABLE FLASH PATTERNS - HELLA MULTI-FLASH



LED SIGNAL WARNING LAMPS



EuroLED Signal Warning Lamp - 24 Volt

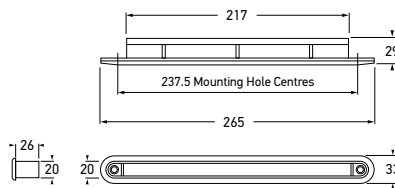
Low profile signal warning 24 LED lamp featuring Ultra Wide Visibility Optic for significantly improved side visibility.

Part Number	2XD 959 020-811	RED
	2XD 959 021-811	AMBER
Mounting	Two hole surface mount with mounting bushes supplied.	
Voltage	24V DC	
Power Consumption	5W	
Protection	Reverse polarity and Transient Spike Circuit protection. IP 6K6 (Protection against dust and high pressure water jets) IP 6K7 (Protection against dust and temporary water immersion)	
Cable Length	Pre-wired with 2.5m of sheathed multi-core cable.	
Approval Markings	E4 10R 04-2896	
The above lamps are not ECE compliant.		



2XD 959 021-811

LED SIGNAL WARNING LAMPS



LED Wide Rim Strip Lamp

Covert wide rim strip LED signal warning lamps available in red and blue colour variants. Optic appears clear until illuminated.

Part Number	12 VOLT	24 VOLT	
	2XD 959 073-601	2XD 959 073-651	
2XD 959 073-701	2XD 959 073-751	RED	
Mounting	Two hole recess mount.		
Power Consumption	2W		
Protection	Reverse polarity protection. IP 6K7 (Protection against dust and temporary water immersion) IP 6K9K (Protection against dust and high pressure/steam jet cleaning)		
Cable Length	Pre-wired with 2.5m of sheathed multi-core cable.		
Includes gasket, screws and screw caps.			



2XD 959 073-701