



# Contents

## ECE Approved LED Lamps

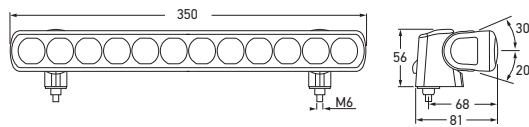
LED Light Bar 350.....	16 - 17
LED Light Bar 470.....	18
LED Light Bar HD Brackets.....	19
83mm Round LED Lamps.....	20 - 23
LED Slim Surface Mount.....	24 - 27
LED DRL/PO Control Unit.....	27 and 45
EuroLED Series.....	28 - 29
DuraLED Series.....	30
DuraLED Combi Lamps.....	31 - 35
LED Combination Trailer Lamps.....	36
110mm Round LED Lamps.....	37 - 38
DuraLED Flush Mount Marker Lamps.....	39
DuraLED Surface Mount Marker Lamps.....	40 - 41
LED Number Plate Lamp.....	41
Recess Mount Marker Lamps.....	42
Centre High Mount Stop Lamps.....	43
LED Daytime Running Lamps.....	44 - 49
ECE Type Approval List.....	50 - 51

**LED Light Bar 350  
- Plastic Bracket**

This innovative, light weight HELLA LED Light Bar is the first such lamp with a body manufactured entirely from non corrosive, thermally conductive high performance plastics. This aerodynamic powerhouse features 12 durable high performance automotive grade LED's and a maximum luminous intensity of 145,000 candela with a mere power consumption of only 25 watts.

The dust and waterproof Light Bar comes in two different beam patterns – High Beam (Ref 20 with 1 lux at approx. 320 metres) and Pencil Beam (Ref 30 with 1 lux at approx. 380 metres).

The hermetically sealed and submersible light bar features a Multivolt circuit for optimum brightness at input voltages from 9 to 33 volts, is fully road legal with ECE approval and comes with a comprehensive 5 year warranty.



<b>Part Number</b>	<b>1FJ 958 040-001 (High Beam)</b>	<b>REF. 20</b>
	<b>1FJ 958 040-051 (Pencil Beam)</b>	<b>REF. 30</b>
<b>Mounting</b>	Upright or pendant.	
<b>Voltage</b>	Multivolt for optimum brightness at input voltages from 9 to 33 volts.	
<b>Power Consumption</b>	25W	
<b>Maximum Luminous Intensity</b>	1FJ 958 040-001: 96,000 candela 1FJ 958 040-051: 145,000 candela	
<b>Protection</b>	Reverse polarity and transient spike protection. IP 6K7 (Protection against dust and temporary water immersion) IP 6K9K (Protection against dust and high-pressure/steam jet cleaning)	
<b>Cable Length</b>	Pre-wired with 2.5m of tinned multi-core cable.	
<b>Approval Markings</b>	(E4) 10R 04-2909 1FJ 958 040-001: (E24) 0008 1FJ 958 040-051: (E24) 0009	
<b>Contents</b>	1 x LED Light Bar 350	2 x Plastic mounting brackets 1 x Instruction booklet



Single plastic mounting bracket - Disassembled view

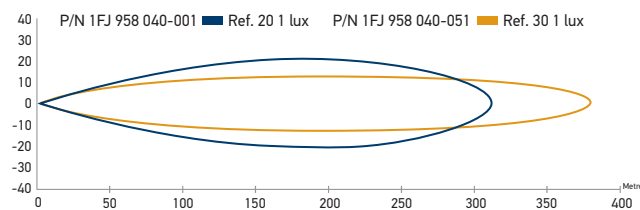


Mounting brackets allow rotation of driving light.






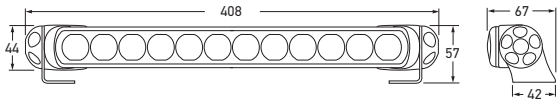


Mounting brackets can be positioned to suit most vehicle installations.

**Beam Pattern - Recorded with one lamp. Distance in metres.**



ECE APPROVED LED LAMPS

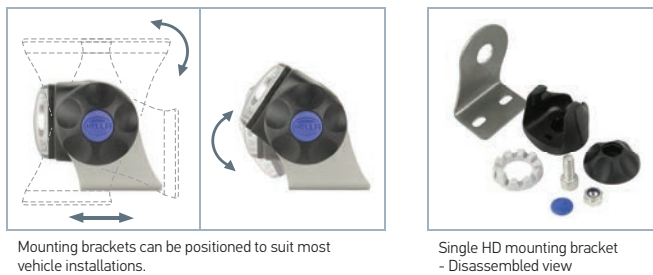
 	  		
<b>Part Number</b>	<b>1FJ 958 040-072 (High Beam)</b>	<b>REF. 20</b>	
	<b>1FJ 958 040-082 (Pencil Beam)</b>	<b>REF. 30</b>	
<b>Mounting</b>	Upright or pendant.		
<b>Voltage</b>	Multivolt for optimum brightness at input voltages from 9 to 33 volts.		
<b>Power Consumption</b>	25W		
<b>Maximum Luminous Intensity</b>	1FJ 958 040-072: 96,000 candela 1FJ 958 040-082: 145,000 candela		
<b>Protection</b>	Reverse polarity and transient spike protection. IP 6K7 (Protection against dust and temporary water immersion) IP 6K9K (Protection against dust and high-pressure/steam jet cleaning)		
<b>Cable Length</b>	Pre-wired with 2.5m of tinned multi-core cable.		
<b>Approval Markings</b>	(E4) 10R 04-2909 1FJ 958 040-072: (E24) 0008 1FJ 958 040-082: (E24) 0009		
<b>Contents</b>	1 x LED Light Bar 350	2 x HD mounting brackets	1 x Instruction booklet

LED Light Bar 350 - HD Bracket

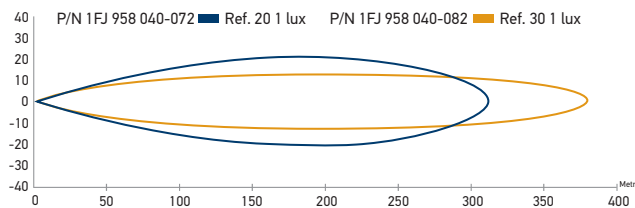
This innovative, light weight HELLA LED Light Bar is the first such lamp with a body manufactured entirely from non corrosive, thermally conductive high performance plastics. This aerodynamic powerhouse features 12 durable high performance automotive grade LED's and a maximum luminous intensity of 145,000 candela with a mere power consumption of only 25 watts.

The dust and waterproof Light Bar comes in two different beam patterns – High Beam (Ref 20 with 1 lux at approx. 320 metres) and Pencil Beam (Ref 30 with 1 lux at approx. 380 metres).

The hermetically sealed and submersible light bar features a Multivolt circuit for optimum brightness at input voltages from 9 to 33 volts, is fully road legal with ECE approval and comes with a comprehensive 5 year warranty.



Beam Pattern - Recorded with one lamp. Distance in metres.



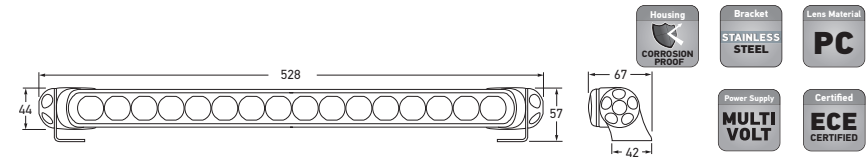
ECE APPROVED LED LAMPS

**LED Light Bar 470  
- HD Bracket**

The longer and brighter LED Light Bar 470 features all the outstanding properties of the LED Light Bar 350 but with an additional four high performance automotive LED's and a maximum luminous intensity of 166,000 candela at a power consumption of only 35 watts.

The dust and waterproof Light Bar comes in two different beam patterns – High Beam (Ref 25 with 1 lux at approx. 330 metres) and Pencil Beam (Ref 37.5 with 1 lux at approx. 410 metres). With only 950g weight the Light Bar is particularly popular for roof mount applications on ATV's and Off-road vehicles. The non corrosive, thermally conductive housing is highly resistant to degradation and due to its slim profile, this streamline Light Bar is ideal for applications where aerodynamic styling are a valued attribute. The flexible, adjustable mounting system ensures easy installation.

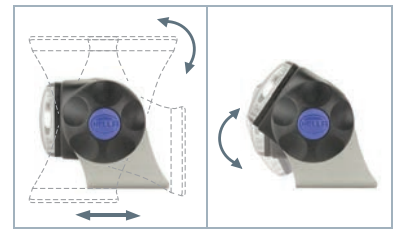
The Light Bar 470 features a Multivolt circuit for optimum brightness at a wide range of input voltages from 9 to 33 volts and is fully road legal with ECE approval.



<b>Part Number</b>	<b>1FJ 958 130-111 (High Beam)</b>	<b>REF. 25</b>
	<b>1FJ 958 130-011 (Pencil Beam)</b>	<b>REF. 37.5</b>
<b>Mounting</b>	Upright or pendant.	
<b>Voltage</b>	Multivolt for optimum brightness at input voltages from 9 to 33 volts.	
<b>Power Consumption</b>	35W	
<b>Maximum Luminous Intensity</b>	1FJ 958 130-111: 113,000 candela 1FJ 958 130-011: 166,000 candela	
<b>Protection</b>	Reverse polarity and transient spike protection. IP 6K7 (Protection against dust and temporary water immersion) IP 6K9K (Protection against dust and high-pressure/steam jet cleaning)	
<b>Cable Length</b>	Pre-wired with 2.5m of tinned multi-core cable.	
<b>Approval Markings</b>	E24 10R 05-1947 1FJ 958 130-111: E24 0012 1FJ 958 130-011: E24 0013	
<b>Contents</b>	1 x LED Light Bar 470    2 x HD mounting brackets    1 x Instruction booklet	

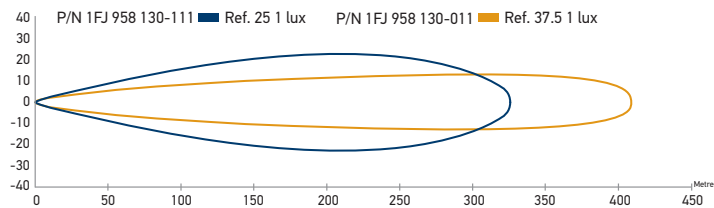


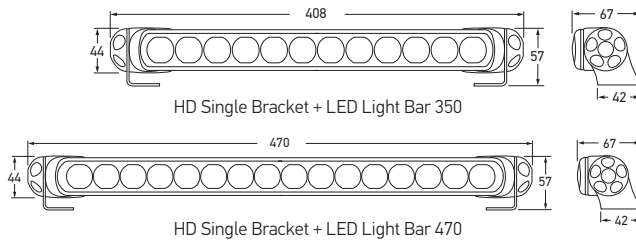
Single HD mounting bracket - Disassembled view



Mounting brackets can be positioned to suit most vehicle installations.

**Beam Pattern - Recorded with one lamp. Distance in metres.**





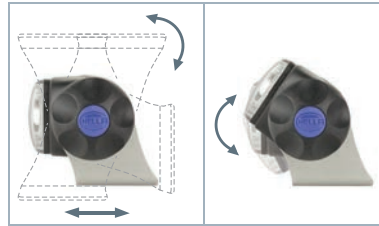
**LED Light Bar  
- HD Single Bracket Kit**

These easy to install universal bracket kits made to suit the LED Light Bar range and can be mounted upright or pendant to accommodate most vehicle installations. The smooth brackets simply clip onto the ends of the light bar. The nuts, bolts and mounting brackets are made from marine grade 316 stainless steel and come with anti-theft screw caps.

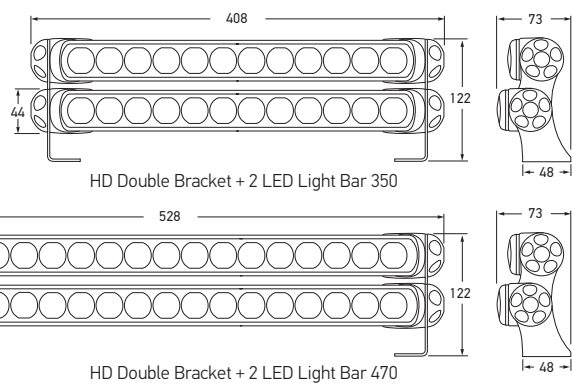
<b>Part Number</b>	<b>8HG 958 139-841</b>	
<b>Kit Includes</b>	2 x Stainless Steel Mounting Feet 2 x Stainless Steel M8 x 20mm Cap Screws 2 x Stainless Steel M8 Nylon Lock Nuts 2 x End Adaptors	2 x Friction Washers 2 x End Clamps 2 x Screw Caps



HD Single Bracket Kit + LED Light Bar 350



Mounting brackets can be positioned to suit most vehicle installations.

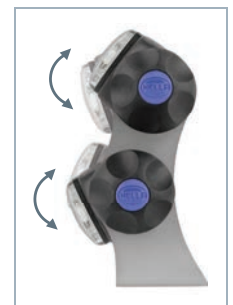
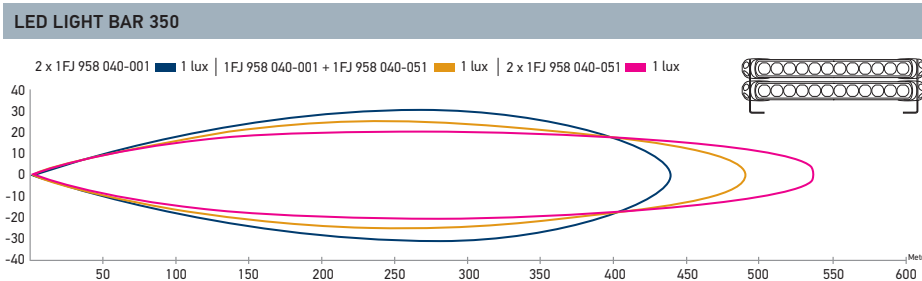


**LED Light Bar  
- HD Double Bracket Kit**

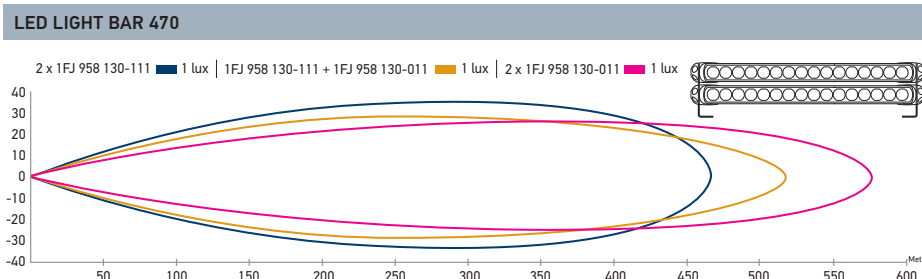


<b>Part Number</b>	<b>8HG 958 139-851</b>	
<b>Kit Includes</b>	2 x Stainless Steel Double Mounting Feet 4 x Stainless Steel M8 x 20mm Cap Screws 4 x Stainless Steel M8 Nylon Lock Nuts 4 x End Adaptors	4 x Friction Washers 4 x End Clamps 4 x Screw Caps

**Beam Patterns - Recorded with two lamps. Distance in metres.**



Mounting brackets allow rotation of Light Bar.



HD Double Bracket Kit + 2 x LED Light Bar 350

### 83mm Round LED Front Direction Indicator/Front Position/Daytime Running Lamp

ECE certified LED front direction indicator/ front position/daytime running lamp with clear lens. Specifically designed for commercial transport applications. Equipped with high efficacy white LED for low power consumption and acrylic lens for superior UV and impact resistance. Direction indicator optic appears clear until illuminated. Each of the lamp versions has different in-built operation logic that are defined to suppress the DRL during the indicator flasher cycle and suit most vehicle installations with or without an additional DRL feed.



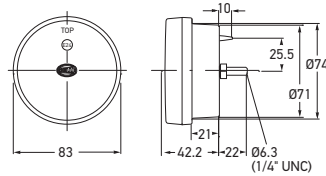
#### 83MM LED LAMP FUNCTIONS



Daytime running lamp

Front position

Direction indicator lamp



Part Number	2BE 980 691-001		2BE 980 691-101		12 VOLT
	2BE 980 690-001	2BE 980 690-101	2BE 980 690-201		24 VOLT
Mounting	Single bolt 1/4" Stainless UNC thread. Nut and washer supplied.				
Power Consumption	12V		24V		
	Front indicator:		3W	4W	
	Daytime running lamp:		4W	4W	
	Front position:		1W	1W	
Protection	Reverse polarity, spike and over voltage protection. IP 6K7 (Protection against dust and temporary water immersion) IP 6K9K (Protection against dust and high pressure/steam jet cleaning)				
Cable Length	Pre-wired with 2.5m of sheathed multi-core cable.				
Approval Markings	E24 5854		E4 10R 04-2907		
Refer to table below for operation logic of each version.					

#### LAMP OPERATION LOGIC

Lamp Input			2BE 980 691-001 2BE 980 690-001			2BE 980 691-101 2BE 980 690-101			2BE 980 690-201		
DRL	FP	DI	DRL	FP	DI	DRL	FP	DI	DRL	FP	DI
Full	Full	Full	Full	Full	Full	Full	Full	Full	Full	Full	Full
Full	Full	Dimmed	Full	Full	Dimmed	Full	Full	Dimmed	Full	Full	Dimmed
Full	Full	Full	Full	Full	Full	Full	Full	Full	Full	Full	Full
Full	Full	Full	Full	Full	Full	Full	Full	Full	Full	Full	Full

■ Full output  
■ Dimmed output

Additional in-built operation logic options are available upon request.



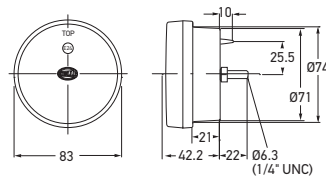
Designed to light the road at night without causing glare to other road users.



Designed to increase the visibility (conspicuity) of your vehicle during daytime.

### 83mm Round LED Front Direction Indicator/Front Position Lamp

ECE certified LED front direction indicator/ front position lamp with clear lens. Specifically designed for commercial transport applications. Equipped with LEDs for low power consumption and acrylic lens for superior UV and impact resistance. Direction indicator optic appears clear until illuminated.



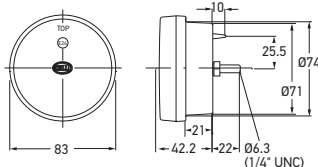
Part Number	2BE 980 691-301		2BE 980 691-307 (Pack of 10)		12 VOLT
	2BE 980 690-301	2BE 980 690-307 (Pack of 10)			24 VOLT
Mounting	Single bolt 1/4" Stainless UNC thread. Nut and washer supplied.				
Power Consumption	12V		24V		
	Front indicator:		3W	4W	
	Front position:		1W	1W	
Protection	Reverse polarity, spike and over voltage protection. IP 6K7 (Protection against dust and temporary water immersion) IP 6K9K (Protection against dust and high pressure/steam jet cleaning)				
Cable Length	Pre-wired with 2.5m of sheathed multi-core cable.				
Approval Markings	E24 5854		E4 10R 04-2907		

#### 83MM LED LAMP FUNCTIONS



Front position

Direction indicator



### 83mm Round LED Daytime Running Lamp

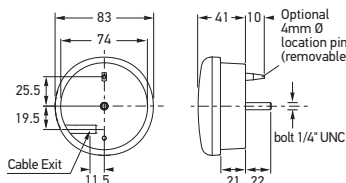
ECE certified LED DRL. The lamp features a traditional round lens that illuminates with a distinctive ring of white LEDs when used as a DRL.



Part Number	2PT 980 691-601	12 VOLT
	2PT 980 690-601	24 VOLT
Mounting	Single bolt 1/4" stainless UNC thread. Nut and washer supplied.	
Power Consumption	4W	
Protection	Reverse polarity, spike and over voltage protection. IP 6K7 (Protection against dust and temporary water immersion) IP 6K9K (Protection against dust and high-pressure/steam jet cleaning)	
Cable Length	Pre-wired with 2.5m of sheathed multi-core cable.	
Approval Markings	E24 5854      E4 10R 04-2907	



Daytime Running Lamp

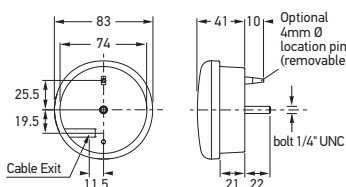
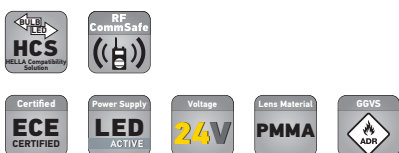


### 83mm Round LED Stop/Rear Position/Rear Direction Indicator Lamp

83mm diameter round LED lamp with single bolt mount.



Part Number	2SD 959 010-201	2SD 959 010-207 (Pack of 10)
	Single bolt 1/4" Stainless UNC thread. Nut and washer supplied.	
Voltage	Multivolt for optimum brightness in 12 and 24 volt systems.	
Power Consumption	Stop: 3W Rear position: 1W Rear indicator: 3W	
Protection	Reverse polarity and 5000 watt Transient Voltage Suppressor (TVS) IP 6K7 (Protection against dust and temporary water immersion) IP 6K9K (Protection against dust and high-pressure/steam jet cleaning)	
Cable Length	Pre-wired with 2.5m of sheathed multi-core cable.	
Approval Markings	E9 1538      E4 10R 04-2741	



### 83mm Round LED Stop/Rear Position/Rear Direction Indicator Lamp - 24 Volt

83mm diameter round LED lamp featuring HCS technology with a single bolt mount.



Part Number	2SD 959 010-401	2SD 959 010-407 (Pack of 10)
	Single bolt 1/4" Stainless UNC thread. Nut and washer supplied.	
Voltage	24V DC	
Power Consumption	Stop: 2W Rear position: <1W Rear indicator: 2W	
Protection	Same as per P/N 2SD 959 010-2xx	
Cable Length	Pre-wired with 2.5m of sheathed multi-core cable.	
Approval Markings	E9 1538      E4 10R 04-2741      ISO 13207-1	

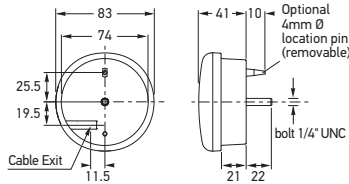
Lamp only compatible with 24V DC HCS units



ECE APPROVED LED LAMPS

### 83mm Round LED Stop/Rear Position Lamp

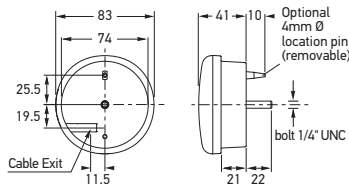
83mm diameter round LED lamp with single bolt mount, featuring Enhanced Definition Technology (EDT).



<b>Part Number</b>	<b>2SB 959 010-001</b>	<b>2SB 959 010-007 (Pack of 10)</b>
<b>Mounting</b>	Single bolt 1/4" Stainless UNC thread. Nut and washer supplied.	
<b>Voltage</b>	Multivolt for optimum brightness at input voltages from 9 to 33 volts.	
<b>Power Consumption</b>	Stop: 3W Rear position: 1W	
<b>Protection</b>	Reverse polarity and 5000 watt Transient Voltage Suppressor (TVS) IP 6K7 (Protection against dust and temporary water immersion) IP 6K9K (Protection against dust and high-pressure/steam jet cleaning)	
<b>Cable Length</b>	Pre-wired with 2.5m of sheathed multi-core cable.	
<b>Approval Markings</b>	E4 11391      E4 10R 04-2741	

### 83mm Round LED Rear Direction Indicator Lamp

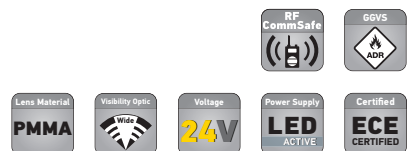
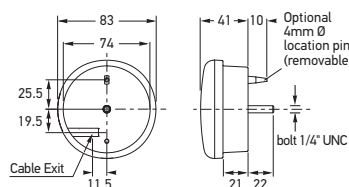
83mm diameter round LED lamp with single bolt mount.



<b>Part Number</b>	<b>2BA 959 011-001</b>	<b>2BA 959 011-007 (Pack of 10)</b>
<b>Mounting</b>	Single bolt 1/4" Stainless UNC thread. Nut and washer supplied.	
<b>Voltage</b>	Multivolt for optimum brightness at input voltages from 9 to 33 volts.	
<b>Power Consumption</b>	2W	
<b>Protection</b>	Reverse polarity and 5000 watt Transient Voltage Suppressor (TVS) IP 6K7 (Protection against dust and temporary water immersion) IP 6K9K (Protection against dust and high-pressure/steam jet cleaning)	
<b>Cable Length</b>	Pre-wired with 2.5m of sheathed multi-core cable.	
<b>Approval Markings</b>	E4 11391      E4 10R 04-2741	

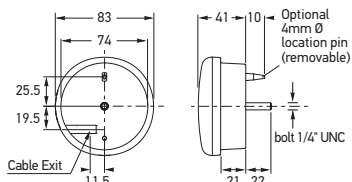
### 83mm Round LED Stop/Rear Position Lamp - 24 Volt

83mm diameter round LED lamp featuring 12 LEDs and a single bolt mount for trucks, buses, caravans and trailers.



<b>Part Number</b>	<b>2SB 959 010-301</b>	<b>2SB 959 010-307 (Pack of 10)</b>
<b>Mounting</b>	Single bolt 1/4" Stainless UNC thread. Nut and washer supplied.	
<b>Voltage</b>	24V DC	
<b>Power Consumption</b>	Stop: 3W Rear position: 1W	
<b>Protection</b>	Reverse polarity and 5000 watt Transient Voltage Suppressor (TVS) IP 6K7 (Protection against dust and temporary water immersion) IP 6K9K (Protection against dust and high-pressure/steam jet cleaning)	
<b>Cable Length</b>	Pre-wired with 2.5m of sheathed multi-core cable.	
<b>Approval Markings</b>	E4 12373      E4 10R 04-2741	

ECE APPROVED LED LAMPS



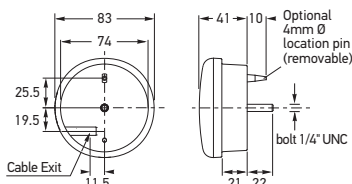
**83mm Round LED Rear Direction Indicator Lamp - 24 Volt**

83mm diameter round LED lamp featuring 12 LEDs, HCS technology and a single bolt mount for trucks, buses, caravans and trailers.



ECE APPROVED LED LAMPS

<b>Part Number</b>	<b>2BA 959 011-301</b>	<b>2BA 959 011-307 (Pack of 10)</b>
<b>Mounting</b>	Single bolt 1/4" Stainless UNC thread. Nut and washer supplied.	
<b>Voltage</b>	24V DC	
<b>Power Consumption</b>	3W	
<b>Protection</b>	Reverse polarity and 5000 watt Transient Voltage Suppressor (TVS) IP 6K7 (Protection against dust and temporary water immersion) IP 6K9K (Protection against dust and high-pressure/steam jet cleaning)	
<b>Cable Length</b>	Pre-wired with 2.5m of sheathed multi-core cable.	
<b>Approval Markings</b>	E4 12373      E4 10R 04-2741      ISO 13207-1	
Lamp only compatible with 24V DC HCS units		

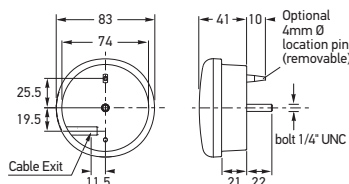
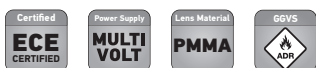


**83mm Round LED Reversing Lamp**

83mm diameter round LED lamp with single bolt mount.



<b>Part Number</b>	<b>2ZR 959 010-501</b>	<b>2ZR 959 010-507 (Pack of 10)</b>
<b>Mounting</b>	Single bolt 1/4" Stainless UNC thread. Nut and washer supplied.	
<b>Voltage</b>	Multivolt for optimum brightness at input voltages from 9 to 33 volts.	
<b>Power Consumption</b>	4W	
<b>Protection</b>	Reverse polarity and 5000 watt Transient Voltage Suppressor (TVS) IP 6K7 (Protection against dust and temporary water immersion) IP 6K9K (Protection against dust and high-pressure/steam jet cleaning)	
<b>Cable Length</b>	Pre-wired with 2.5m of sheathed multi-core cable.	
<b>Approval Markings</b>	E4 11391      E4 10R 04-2741	



**83mm Round LED Rear Fog Lamp**

83mm diameter round LED lamp with single bolt mount. Optic appears clear until illuminated.

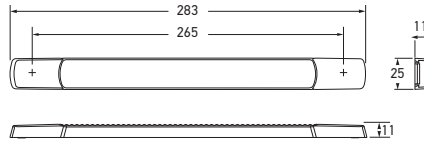


<b>Part Number</b>	<b>2NE 959 011-501</b>	<b>2NE 959 011-507 (Pack of 10)</b>
<b>Mounting</b>	Single bolt 1/4" Stainless UNC thread. Nut and washer supplied.	
<b>Voltage</b>	Multivolt for optimum brightness at input voltages from 9 to 33 volts.	
<b>Power Consumption</b>	3W	
<b>Protection</b>	Reverse polarity and 5000 watt Transient Voltage Suppressor (TVS) IP 6K7 (Protection against dust and temporary water immersion) IP 6K9K (Protection against dust and high-pressure/steam jet cleaning)	
<b>Cable Length</b>	Pre-wired with 2.5m of sheathed multi-core cable.	
<b>Approval Markings</b>	E4 11391      E4 10R 04-2741	
Fog lamp lens is clear when not active.		

ECE APPROVED LED LAMPS

### LED Front Direction Indicator Lamp - Surface Mount

Surface mount LED front direction indicator lamp that is designed with an ultra wide visibility optic for significantly improved side visibility. Featuring a low profile, ultra durable Grilamid® nylon lens for extreme impact, UV, chemical and stress resistance. Optic appears clear until illuminated.



Ultra slim height of only 11mm. Lamp shown active.

Part Number	HORIZONTAL MOUNT	VERTICAL MOUNT	
		2BA 980 888-311	2BA 980 888-511
	2BA 980 888-411	2BA 980 888-611	24 VOLT
Mounting	Suitable for horizontal or vertical mounting with tolerance. See diagrams.		
Power Consumption	3W		
Protection	Reverse polarity protection. IP 6K7 (Protection against dust and temporary water immersion) IP 6K9K (Protection against dust and high-pressure/steam jet cleaning)		
Cable Length	Pre-wired with 2.5m of sheathed multi-core cable.		
Approval Markings	Horizontal E24 5869	Vertical E24 5890	E4 10R 04-2910

### LED Rear Direction Indicator Lamp - Surface Mount

Surface mount LED rear direction indicator lamp that is designed with an ultra wide visibility optic for significantly improved side visibility. Featuring a low profile, ultra durable Grilamid® nylon lens for extreme impact, UV, chemical and stress resistance. Optic appears clear until illuminated.

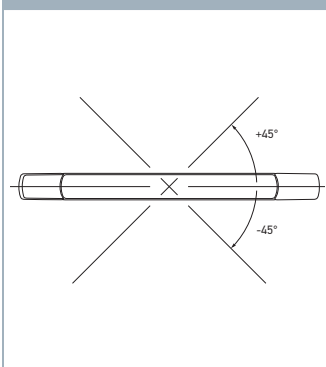


Ultra slim height of only 11mm. Lamp shown active.

Part Number	2BA 980 888-011	12 VOLT
	2BA 980 888-211	24 VOLT
Mounting	Suitable for horizontal and vertical mounting with tolerance. See diagram.	
Power Consumption	3W	
Protection	Reverse polarity protection. IP 6K7 (Protection against dust and temporary water immersion) IP 6K9K (Protection against dust and high-pressure/steam jet cleaning)	
Cable Length	Pre-wired with 2.5m of sheathed multi-core cable.	
Approval Markings	E24 5891	E4 10R 04-2910

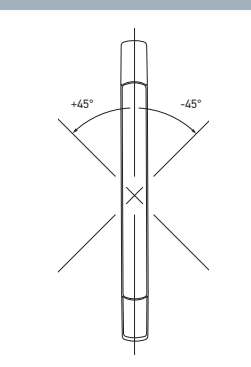
#### MOUNTING DIAGRAMS

P/N 2BA 980 888-311/...-411



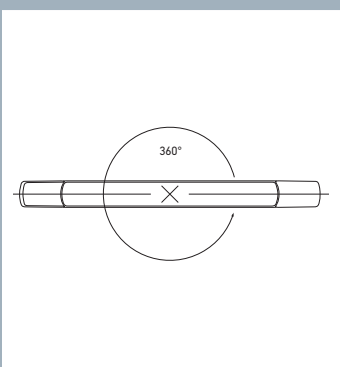
Horizontal mount: +/- 45° rotation around lamp (and vehicle) axis

P/N 2BA 980 888-511/...-611

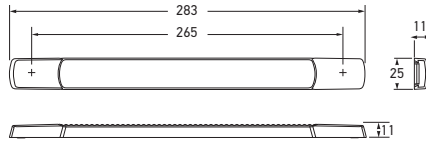
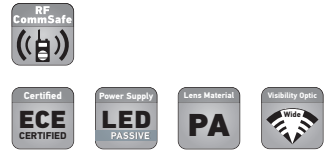


Vertical mount: +/- 45° rotation around lamp (and vehicle) axis

P/N 2BA 980 888-011/...-211



Horizontal mount & Vertical mount: 360° rotation around lamp (and vehicle) axis



Part Number	2SB 980 887-011	12 VOLT
	2SB 980 887-211	24 VOLT
Mounting	Suitable for horizontal and vertical mounting with tolerance. See diagram.	
Power Consumption	Stop: 3W	Rear Position: <0.5W
Protection	Reverse polarity protection. IP 6K7 (Protection against dust and temporary water immersion) IP 6K9K (Protection against dust and high-pressure/steam jet cleaning)	
Cable Length	Pre-wired with 0.3m cable.	
Approval Markings	E24 5891 E4 10R 04-2913	

STOP / REAR POSITION LAMP FUNCTIONS



LED Stop/Rear Position Lamp - Surface Mount

Surface mount LED stop/rear position lamp that is designed with an ultra wide visibility optic for significantly improved side visibility. Featuring a low profile, ultra durable Grilamid® nylon lens for extreme impact, UV, chemical and stress resistance. Optic appears clear until illuminated.



Ultra slim height of only 11mm. Lamp shown active.



Part Number	2DA 980 887-311	12 VOLT
	2DA 980 887-411	24 VOLT
Mounting	Suitable for horizontal and vertical mounting with tolerance. See diagrams.	
Power Consumption	3W	
Protection	Reverse polarity protection. IP 6K7 (Protection against dust and temporary water immersion) IP 6K9K (Protection against dust and high-pressure/steam jet cleaning)	
Cable Length	Pre-wired with 2.5m of sheathed multi-core cable.	
Approval Markings	E24 0087 E4 10R 04-2910	

LED Auxiliary Stop Lamp - Surface Mount

Surface mount LED auxiliary stop lamp that is designed with an ultra wide visibility optic for significantly improved side visibility. Featuring a low profile, ultra durable Grilamid® nylon lens for extreme impact, UV, chemical and stress resistance. Optic appears clear until illuminated.



Ultra slim height of only 11mm. Lamp shown active.

MOUNTING DIAGRAMS		
P/N 2SB 980 887-011/...-211	P/N 2DA 980 887-311/...-411	P/N 2DA 980 887-311/...-411

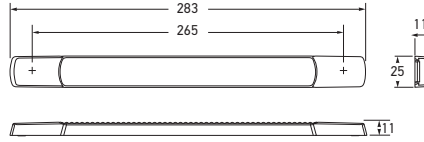
Horizontal mount & Vertical mount: 360° rotation around lamp (and vehicle) axis

Horizontal mount: +/- 15° tilt (up/down)

Vertical mount: +/- 12° tilt (up/down)

**LED Rear Fog Lamp  
- Surface Mount**

Surface mount LED rear fog lamp. Featuring a low profile, ultra durable Grilamid® nylon lens for extreme impact, UV, chemical and stress resistance. Optic appears clear until illuminated.



Ultra slim height of only 11mm. Lamp shown active.

<b>Part Number</b>	<b>2NE 980 889-501</b>	<b>12 VOLT</b>
	<b>2NE 980 889-601</b>	<b>24 VOLT</b>
<b>Mounting</b>	Suitable for horizontal and vertical mounting.	
<b>Power Consumption</b>	3W	
<b>Protection</b>	Reverse polarity protection. IP 6K7 (Protection against dust and temporary water immersion) IP 6K9K (Protection against dust and high-pressure/steam jet cleaning)	
<b>Cable Length</b>	Pre-wired with 2.5m of sheathed multi-core cable.	
<b>Approval Markings</b>	E24 0010      E4 10R 04-2910	

**LED Reversing Lamp  
- Surface Mount**

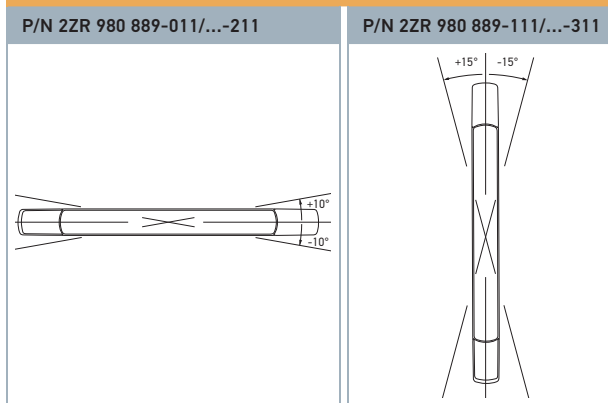
Surface mount LED reversing lamp. Featuring a low profile, ultra durable Grilamid® nylon lens for extreme impact, UV, chemical and stress resistance. Optic appears clear until illuminated.



Ultra slim height of only 11mm. Lamp shown active.

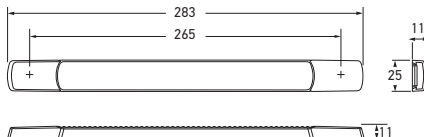
	HORIZONTAL MOUNT	VERTICAL MOUNT	
<b>Part Number</b>	<b>2ZR 980 889-011</b>	<b>2ZR 980 889-111</b>	<b>12 VOLT</b>
	<b>2ZR 980 889-211</b>	<b>2ZR 980 889-311</b>	<b>24 VOLT</b>
<b>Mounting</b>	Suitable for horizontal or vertical mounting with tolerance. See diagrams.		
<b>Power Consumption</b>	3W		
<b>Protection</b>	Reverse polarity protection. IP 6K7 (Protection against dust and temporary water immersion) IP 6K9K (Protection against dust and high-pressure/steam jet cleaning)		
<b>Cable Length</b>	Pre-wired with 2.5m of sheathed multi-core cable.		
<b>Approval Markings</b>	Horizontal E24 0027      Vertical E24 0028		
Reversing lamps are not designed for continuous operation.			

**MOUNTING DIAGRAMS**



Horizontal mount: +/- 10° rotation around lamp (and vehicle) axis

Vertical mount: +/- 15° rotation around lamp (and vehicle) axis



Part Number	LAMP MODULE	KIT	
		2PT 980 880-002	2PT 980 880-811
	2PT 980 880-102	2PT 980 880-861	24 VOLT
Mounting	Suitable for horizontal mounting only.		
Power Consumption	Daytime running lamp: 3W Front position: <0.5W		
Protection	Reverse polarity protection. IP 6K7 (Protection against dust and temporary water immersion) IP 6K9K (Protection against dust and high pressure/steam jet cleaning).		
Cable Length	Pre-wired with 2.5m of sheathed multi-core cable.		
Spare Parts	5DF 980 816-001 5DF 980 816-501	LED DRL/PO Control Unit (12 Volt) LED DRL/PO Control Unit (24 Volt)	
Approval Markings	E24 5869		

### LED Daytime Running Lamp - Surface Mount

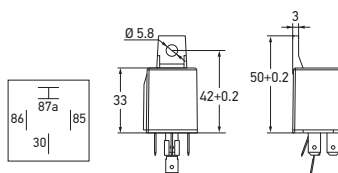
ECE certified LED Daytime Running Lamp with clear Grilamid® lens. Complete with mounting screws and screw caps. Kit contains 2 LED lamps and a changeover relay.



Designed to light the road at night without causing glare to other road users.



Designed to increase the visibility (conspicuity) of your vehicle during daytime.



### LED DRL/PO Control Unit

A control unit that dims the light output of LED daytime running lamps to front position/park function level.



Part Number	5DF 980 816-001	12 VOLT
	5DF 980 816-501	24 VOLT
Requirement	One unit is required per pair of LED daytime running lamps.	

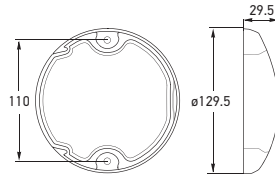
**RECOMMENDED INSTALLATION DIAGRAM FOR WIRING**

**WIRING SPECIFICATIONS**

Terminal Number	Connect to
30	Ignition (+)
85	Earth return (-)
86	Front position or headlamps (+)
87A	LED daytime running lamps (+)

### EuroLED Stop/Rear Position Lamp

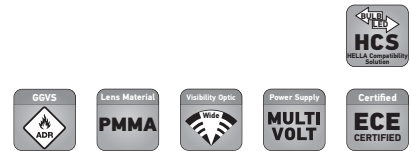
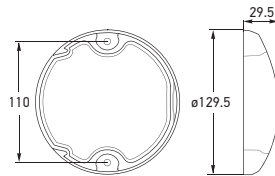
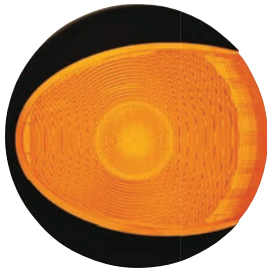
Low profile round LED stop/rear position lamp with single LED and red lens. The use of precision optics enable a single high intensity LED to be used for the first time in a commercial vehicle lamp, resulting in low power consumption.



Part Number	2SB 959 821-601	BLACK COVER
	2SB 959 821-611	WHITE COVER
Mounting	Two hole surface mount with mounting bushes supplied.	
Voltage	Multivolt for optimum brightness at input voltages from 9 to 33 volts.	
Power Consumption	Stop: 2.5W Rear position: 0.5W	
Protection	Reverse polarity and 1500 watt Transient Voltage Suppressor (TVS) IP 6K6 (Protection against dust and high pressure water jets) IP 6K7 (Protection against dust and temporary water immersion)	
Cable Length	Pre-wired with 2.5m of sheathed multi-core cable.	
Approval Markings	E4 10208      E4 10R 04-2894	

### EuroLED Rear Direction Indicator Lamp

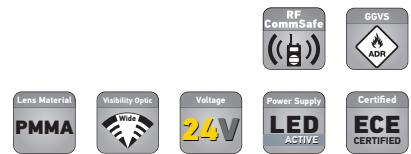
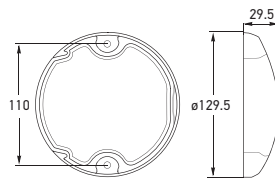
Low profile round LED rear direction indicator lamp with single LED and amber lens.



Part Number	2BA 959 822-601	BLACK COVER
	2BA 959 822-611	WHITE COVER
Power Consumption	2.5W	
Protection	Reverse polarity and 5000 watt Transient Voltage Suppressor (TVS) IP 6K6 (Protection against dust and high pressure water jets) IP 6K7 (Protection against dust and temporary water immersion)	
Approval Markings	E4 10208      E4 10R 04-2742      ISO 13207-1	
Other specifications as per P/N 2SB 959 821-6xx. Lamp compatible with 12V DC and 24V DC HCS units.		

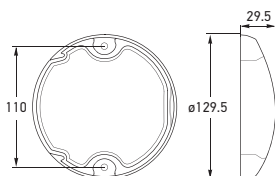
### EuroLED Stop/Rear Position Lamp - 24 Volt

Low profile LED stop/rear position lamp featuring 24 LEDs, Enhanced Definition Technology (EDT) and Ultra Wide Visibility Optic for significantly improved side visibility.



Part Number	2SB 959 020-601	BLACK COVER
	2SB 959 020-611	WHITE COVER
Mounting	Two hole surface mount with mounting bushes supplied.	
Voltage	24V DC	
Power Consumption	Stop: 5W Rear position: 1W	
Protection	Reverse polarity and transient spike circuit protection. IP 6K6 (Protection against dust and high pressure water jets) IP 6K7 (Protection against dust and temporary water immersion)	
Cable Length	Pre-wired with 2.5m of sheathed multi-core cable.	
Approval Markings	E4 10208      E4 10R 04-2896	

ECE APPROVED LED LAMPS



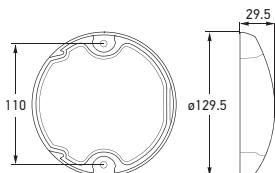
**EuroLED Rear Direction Indicator Lamp - 24 Volt**

Low profile LED rear direction indicator lamp featuring 24 LEDs and Ultra Wide Visibility Optic for significantly improved side visibility.

Part Number	2BA 959 021-601	BLACK COVER
	2BA 959 021-611	WHITE COVER
Mounting	Two hole surface mount with mounting bushes supplied.	
Voltage	24V DC	
Power Consumption	5W	
Protection	Reverse polarity and transient spike circuit protection. IP 6K6 (Protection against dust and high pressure water jets) IP 6K7 (Protection against dust and temporary water immersion)	
Cable Length	Pre-wired with 2.5m of sheathed multi-core cable.	
Approval Markings	E4 10208      E4 10R 04-2896	



ECE APPROVED LED LAMPS

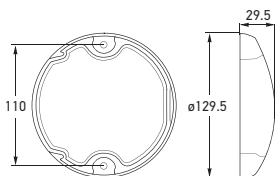


**EuroLED Rear Fog Lamp**

Low profile round LED rear fog lamp with single LED and clear lens. Optic appears clear until illuminated.

Part Number	2NE 959 821-201	BLACK COVER
	2NE 959 821-211	WHITE COVER
Mounting	Two hole surface mount with mounting bushes supplied.	
Voltage	Multivolt for optimum brightness at input voltages from 9 to 33 volts.	
Power Consumption	4W	
Protection	Reverse polarity and 1500 watt Transient Voltage Suppressor (TVS) IP 6K6 (Protection against dust and high pressure water jets) IP 6K7 (Protection against dust and temporary water immersion)	
Cable Length	Pre-wired with 2.5m of sheathed multi-core cable.	
Approval Markings	E4 10208      E4 10R 04-2894	

Fog lamp lens is clear when not active.



**EuroLED Reversing Lamp**

Low profile round LED reversing lamp with single LED and clear lens.

Part Number	2ZR 959 820-601	BLACK COVER
	2ZR 959 820-611	WHITE COVER
Power Consumption	2.5W	
Approval Markings	E4 10208      E4 10R 04-2894	

Other specifications as per P/N 2NE 959 821-2xx.

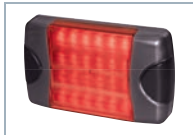
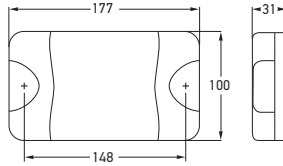




ECE APPROVED LED LAMPS

### DuraLED Stop/Rear Position Lamp

LED stop/rear position lamp featuring 24 LEDs and Enhanced Definition Technology (EDT) for trucks, buses, caravans and trailers.

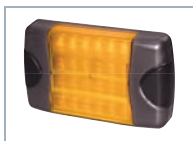
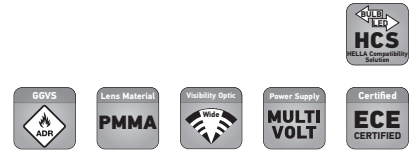
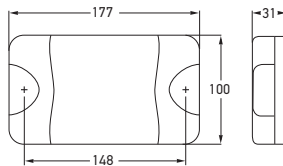


2SB 980 606-201

Part Number	RED LENS	CLEAR LENS	
	2SB 980 606-001	2SB 980 606-201	
2SB 980 606-501	2SB 980 606-701	VERTICAL MOUNT	
Mounting	Two hole surface mount with mounting bushes supplied.		
Voltage	Multivolt for optimum brightness at input voltages from 9 to 33 volts.		
Power Consumption	Stop: 6W	Rear position: 2.5W	
Protection	Reverse polarity and 5000 watt Transient Voltage Suppressor (TVS) IP 6K6 (Protection against dust and high pressure water jets) IP 6K7 (Protection against dust and temporary water immersion)		
Cable Length	Pre-wired with 2.5m of sheathed multi-core cable.		
Approval Markings	E24 5850		E4 10R 04-2891

### DuraLED Rear Direction Indicator Lamp

LED rear direction indicator lamp featuring 24 LEDs and HCS technology for trucks, buses, caravans and trailers.

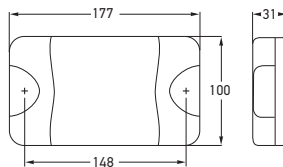


2BA 980 607-201

Part Number	AMBER LENS	CLEAR LENS	
	2BA 980 607-001	2BA 980 607-201	
2BA 980 607-501	2BA 980 607-701	VERTICAL MOUNT	
Power Consumption	4W		
Approval Markings	E24 5850		E4 10R 04-2892 ISO 13207-1
Other specifications as per P/N 2SB 980 606-xxx. Lamp compatible with 12V DC and 24V DC HCS units.			

### DuraLED Reversing Lamp

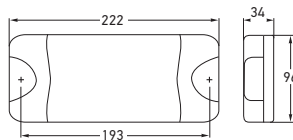
LED reversing lamp featuring 24 LEDs for trucks, buses, caravans and trailers.



2ZR 980 605-201

Part Number	WHITE ENDS	CHARCOAL ENDS	
	2ZR 980 605-001	2ZR 980 605-201	
2ZR 980 605-501	2ZR 980 605-701	VERTICAL MOUNT	
Power Consumption	4W		
Approval Markings	E24 5850		E4 10R 04-2891
Other specifications as per P/N 2SB 980 606-xxx. Reversing lamp is not designed for continuous use.			

ECE APPROVED LED LAMPS



Part Number	2SK 980 603-503	HIGH IMPACT ACRYLIC LENS
	2SK 980 603-552	GRILAMID® LENS
Mounting	Suitable for horizontal mounting only. Two hole surface mount with mounting bushes supplied.	
Voltage	Multivolt for optimum brightness in 12 and 24 volt systems.	
Power Consumption	Stop: 5W Rear position: 1W	Rear direction indicator: 4W Reverse: 3W
Protection	Reverse polarity and transient spike circuit protection. IP 6K6 (Protection against dust and high pressure water jets) IP 6K7 (Protection against dust and temporary water immersion)	
Cable Length	Pre-wired with 2.5m of sheathed multi-core cable.	
Approval Markings	E24 5870 E24 10R 04-0958	

DuraLED Combi Stop/Rear Position/Rear Direction Indicator/Reversing Lamp

LED stop, rear position, rear direction indicator and reversing lamp. Modern clear lens design with black mounting base. Low power consumption and long life equates to economical running costs. Ideal for small trucks and utes.



**COMBINATION LAMP FUNCTIONS**

Stop      Rear position      Rear direction indicator      Reverse

Part Number	2SK 980 615-001	HIGH IMPACT ACRYLIC LENS
	2SK 980 615-052	GRILAMID® LENS
Mounting	Suitable for horizontal mounting only. Two hole surface mount with mounting bushes supplied.	
Voltage	Multivolt for optimum brightness in 12 and 24 volt systems.	
Power Consumption	Stop: 5W Rear position: 1W Rear direction indicator: 4W	Reverse: 3W Night: 1W
Protection	Reverse polarity and transient spike circuit protection. IP 6K6 (Protection against dust and high pressure water jets) IP 6K9K (Protection against dust and high pressure/steam jet cleaning)	
Approval Markings	E24 5870 E24 10R 04-0958	

DuraLED Combi Stop/Rear Position Rear Direction Indicator/Reversing Lamp with DT Connector and Night Light

LED stop, rear position, rear direction indicator and reversing lamp. Modern clear lens design with black mounting base. Low power consumption and long life equates to economical running costs. Ideal for small trucks and utes.



Rear view showing DT connector that allows application of self-adhesive heat shrink.

**COMBINATION LAMP FUNCTIONS**

Stop      Rear position      Rear direction indicator      Reverse



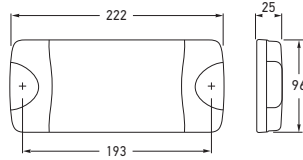
ECE APPROVED LED LAMPS

### DuraLED Combi-S Stop/Rear Position/Rear Direction Indicator/Reversing Lamp - 24 Volt

LED combination lamp featuring modern clear lens design. Low power consumption and long life equates to economical running costs. Ideal for 24V DC commercial vehicles. Optic appears clear until illuminated.



Ultra slim height of only 25mm.



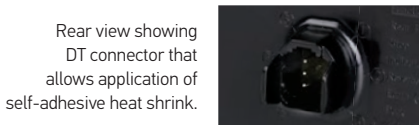
<b>Part Number</b>	<b>2SK 980 613-501</b>		
<b>Mounting</b>	Two hole surface mount with mounting bushes supplied. Suitable for horizontal mounting.		
<b>Voltage</b>	24V DC		
<b>Power Consumption</b>	Stop: 3W Rear position: 1W	Rear direction indicator: 3W Reverse: 3W	
<b>Protection</b>	Reverse polarity and 5000 watt Transient Voltage Suppressor (TVS) IP 6K7 (Protection against dust and temporary water immersion) IP 6K9K (Protection against dust and high-pressure/steam jet cleaning)		
<b>Cable Length</b>	Pre-wired with 2.5m of sheathed multi-core cable.		
<b>Approval Markings</b>	E24 5894	E4 10R 04-2912	ISO 13207-1
Lamp only compatible with 24V DC HCS units.			

#### COMBI-S LAMP FUNCTIONS

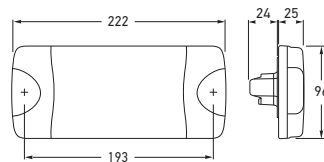


### DuraLED Combi-S Stop/Rear Position/Rear Direction Indicator/Reversing Lamp with DT Connector and Night Light - 24 Volt

LED combination lamp featuring modern clear lens design. Low power consumption and long life equates to economical running costs. Ideal for 24V DC commercial vehicles. Optic appears clear until illuminated.



Rear view showing DT connector that allows application of self-adhesive heat shrink.

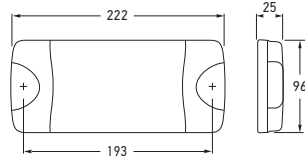


<b>Part Number</b>	<b>2SK 980 602-501</b>		
<b>Mounting</b>	Two hole surface mount with mounting bushes supplied. Suitable for horizontal mounting.		
<b>Voltage</b>	24V DC		
<b>Power Consumption</b>	Stop: 3W Rear position: 1W Rear direction indicator: 3W	Reverse: 3W Night: 1W	
<b>Protection</b>	Reverse polarity and 5000 watt Transient Voltage Suppressor (TVS) IP 6K7 (Protection against dust and temporary water immersion) IP 6K9K (Protection against dust and high-pressure/steam jet cleaning)		
<b>Approval Markings</b>	E24 5894	E4 10R 04-2912	ISO 13207-1
Lamp only compatible with 24V DC HCS units.			

#### COMBI-S LAMP FUNCTIONS



ECE APPROVED LED LAMPS



<b>Part Number</b>	<b>2SD 980 613-211</b>		
<b>Mounting</b>	Two hole surface mount with mounting bushes supplied. Suitable for horizontal or vertical mounting.		
<b>Voltage</b>	Multivolt for optimum brightness in 12 and 24 volt systems.		
<b>Power Consumption</b>	Stop:	5W	
	Rear position:	1W	
	Rear direction indicator:	5W	
<b>Protection</b>	Reverse polarity and 5000 watt Transient Voltage Suppressor (TVS) IP 6K7 (Protection against dust and temporary water immersion) IP 6K9K (Protection against dust and high-pressure/steam jet cleaning)		
<b>Cable Length</b>	Pre-wired with 2.5m of sheathed multi-core cable.		
<b>Approval Markings</b>	E24 5883	E4 10R 04-2901	ISO 13207-1

Lamp only compatible with 24V DC HCS units.

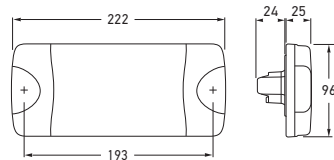


Ultra slim height of only 25mm.

ECE APPROVED LED LAMPS

**DuraLED Combi-S Stop/Rear Position/Rear Direction Indicator Lamp - Heavy Duty**

LED combination lamp featuring Ultra Wide Visibility Optics for significantly improved side visibility and Enhanced Definition Technology (EDT). Suitable for commercial vehicles and boat trailers. Shockproof and fully sealed to withstand water submersion and high-pressure washing. Optic appears clear until illuminated.



<b>Part Number</b>	<b>2SD 980 602-211</b>		
<b>Mounting</b>	Two hole surface mount with mounting bushes supplied. Suitable for horizontal or vertical mounting.		
<b>Voltage</b>	Multivolt for optimum brightness in 12 and 24 volt systems.		
<b>Power Consumption</b>	Stop:	5W	
	Rear position:	1W	
	Rear direction indicator:	5W	
	Night:	1W	
<b>Protection</b>	Reverse polarity and 5000 watt Transient Voltage Suppressor (TVS) IP 6K7 (Protection against dust and temporary water immersion) IP 6K9K (Protection against dust and high-pressure/steam jet cleaning)		
<b>Approval Markings</b>	E24 5883	E4 10R 04-2901	ISO 13207-1

Lamp only compatible with 24V DC HCS units.



**DuraLED Combi-S Stop/Rear Position/Rear Direction Indicator Lamp with DT Connector and Night Light - Heavy Duty**

LED combination lamp featuring Ultra Wide Visibility Optics for significantly improved side visibility and Enhanced Definition Technology (EDT). Night light function allows illumination of the rear position lamp independently from the remaining marker lamps on the vehicle, resulting in low power consumption. Suitable for commercial and boat trailers. Shockproof and fully sealed to withstand water submersion and high-pressure washing. Optic appears clear until illuminated.



Rear view showing DT connector that allows application of self-adhesive heat shrink.

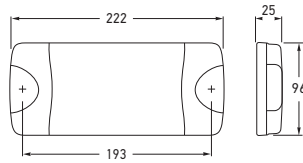
ECE APPROVED LED LAMPS

### DuraLED Combi-R Stop/Rear Position/Rear Direction Indicator Lamp with Retro Reflector

LED combination lamp with 34cm<sup>2</sup> red retro reflector which features Enhanced Definition Technology (EDT). Suitable for light commercial and boat trailers. Shockproof and fully sealed to withstand water submersion and high-pressure washing.



Ultra slim height of only 25mm.



<b>Part Number</b>	<b>2VA 980 710-061</b>		
<b>Mounting</b>	Two hole surface mount with mounting bushes supplied. Suitable for horizontal mounting.		
<b>Voltage</b>	Multivolt for optimum brightness in 12 and 24 volt systems.		
<b>Power Consumption</b>	Stop:	4W	
	Rear position:	1W	
	Rear direction indicator:	4W	
<b>Protection</b>	Reverse polarity and 5000 watt Transient Voltage Suppressor (TVS) IP 6K7 (Protection against dust and temporary water immersion) IP 6K9K (Protection against dust and high-pressure/steam jet cleaning)		
<b>Cable Length</b>	Pre-wired with 2.5m of sheathed multi-core cable.		
<b>Approval Markings</b>	E24 5882	E4 10R 04-2900	

#### COMBI-R LAMP FUNCTIONS



Stop



Rear position



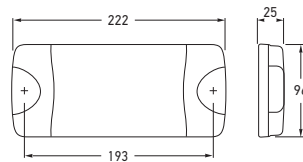
Rear direction indicator

### DuraLED Combi-R Stop/Rear Position/Rear Direction Indicator Lamp with Retro Reflector - 24 Volt

LED combination lamp with 34cm<sup>2</sup> red retro reflector which features Enhanced Definition Technology (EDT). Suitable for light commercial and boat trailers. Shockproof and fully sealed to withstand water submersion and high-pressure washing.



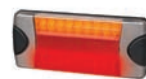
Ultra slim height of only 25mm.



<b>Part Number</b>	<b>2VA 980 710-301</b>		
<b>Mounting</b>	Two hole surface mount with mounting bushes supplied. Suitable for horizontal mounting.		
<b>Voltage</b>	24V DC		
<b>Power Consumption</b>	Stop:	4W	
	Rear position:	1W	
	Rear direction indicator:	4W	
<b>Protection</b>	Reverse polarity and 5000 watt Transient Voltage Suppressor (TVS) IP 6K7 (Protection against dust and temporary water immersion) IP 6K9K (Protection against dust and high-pressure/steam jet cleaning)		
<b>Cable Length</b>	Pre-wired with 2.5m of sheathed multi-core cable.		
<b>Approval Markings</b>	E24 5882	E4 10R 04-2900	ISO 13207-1

Lamp only compatible with 24V DC HCS units.

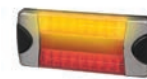
#### COMBI-R LAMP FUNCTIONS



Stop

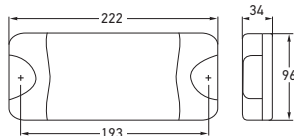


Rear position



Rear direction indicator

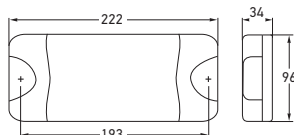
ECE APPROVED LED LAMPS



<b>Part Number</b>	<b>2SD 959 050-401</b>		
Mounting	Suitable for horizontal or vertical mounting. Two hole surface mount with mounting bushes supplied.		
Voltage	Multivolt for optimum brightness at input voltages from 8 to 28 volts.		
Power Consumption	Stop:	5W	
	Rear position:	1.5W	
	Rear indicator:	3W	
Protection	Reverse polarity and 5000 watt Transient Voltage Suppressor (TVS) IP 6K6 (Protection against dust and high pressure water jets) IP 6K7 (Protection against dust and temporary water immersion)		
Cable Length	Pre-wired with 2.5m of sheathed multi-core cable.		
Approval Markings	E4 10176	E4 10R 04-2734	ISO 13207-1
Lamp compatible with 12V DC and 24V DC HCS units.			

**DuraLED Combi Stop/Rear Position/Rear Direction Indicator Lamp**

LED combination lamp, featuring Ultra Wide Visibility Optics, HCS technology and Enhanced Definition Technology (EDT). Suitable for light commercial and boat trailers. Shockproof and fully sealed to withstand water submersion and high-pressure washing. Optic appears clear until illuminated.



<b>Part Number</b>	<b>2SD 959 050-001</b>		
Mounting	Suitable for horizontal mounting only. Two hole surface mount with mounting bushes supplied.		
Power Consumption	Stop:	6W	
	Rear position:	1W	
	Rear indicator:	5W	
Cable Length	Pre-wired with 6m of sheathed multi-core cable.		
Approval Markings	E4 10176	E4 10R 04-2895	
Other specifications as per P/N 2SD 959 050-401.			

**DuraLED Combi Stop/Rear Position/Rear Direction Indicator Lamp**

LED combination lamp, featuring Ultra Wide Visibility Optics and Enhanced Definition Technology (EDT). Suitable for light commercial and boat trailers. Shockproof and fully sealed to withstand water submersion and high-pressure washing. Optic appears clear until illuminated.



<b>Part Number</b>	<b>2VB 959 050-821</b>		
Kit contents:	Each trailer lamp pack contains: 2 x 2SD 959 050-401    Combination stop/rear position and rear direction indicator lamp 2 x 2KA 959 640-601    LED number plate lamp 2 x 8RA 002 020-001    Red retro reflector		
Approval Markings	2SD 959 050-401	E4 10176	E4 10R 04-2734
	2KA 959 640-601	E4 4068	E4 10R 04-2906
	8RA 002 020-001	E17 02346	

**DuraLED Trailer Lamp Pack**

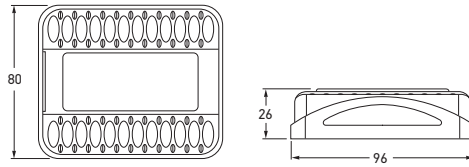
A Fit and Forget solution for trailers or caravans.



ECE APPROVED LED LAMPS

### Stop/Rear Position/Indicator Lamp

LED stop, rear position and rear indicator lamp with 18cm<sup>2</sup> red retro reflector. Modern clear lens design with black mounting base. Low power consumption and long life equates to economical running costs. Convenient mounting base with multiple fixing points allow easy fitment to most trailers/vehicles. The lamp is fully sealed against dust and moisture ingress. Optic appears clear until illuminated.



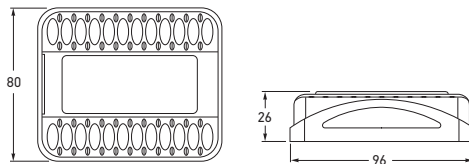
<b>Part Number</b>	<b>2VA 980 720-001</b>	<b>2VA 980 720-007 (Pack of 18)</b>
<b>Mounting</b>	Suitable for horizontal or vertical mounting. Surface mount, choice of mounting holes. Lamp clips into mounting base.	
<b>Voltage</b>	Multivolt for optimum brightness at input voltages from 12 to 24 volts.	
<b>Power Consumption</b>	Stop: 2W Rear position: 1W Rear direction indicator: 2W	
<b>Protection</b>	Reverse polarity and transient spike circuit protection. IP 6K7 (Protection against dust and temporary water immersion) IP 6K9K (Protection against dust and high pressure/steam jet cleaning)	
<b>Cable Length</b>	Pre-wired with 0.5m of sheathed multi-core cable.	
<b>Approval Markings</b>	E24 5860      E4 10R 05-3262	
Other cable lengths available on request.		

#### TRAILER LAMP FUNCTIONS



### Stop/Rear Position/Indicator Lamp with Number Plate Function

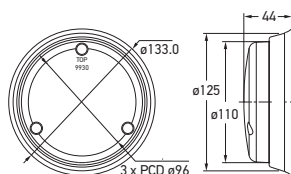
As per P/N 2VA 980 720-00x with number plate function.



<b>Part Number</b>	<b>2VB 980 720-401</b>	<b>2VB 980 720-407 (Pack of 18)</b>
	<b>2VB 980 720-501</b>	<b>2VB 980 720-507 (Pack of 18)</b>
<b>Mounting</b>	Two lamps required for ECE compliance when mounted on either side of number plate. Contact HELLA for any other configuration.	
<b>Power Consumption</b>	Stop: 2W Rear position/number plate: 1W Rear direction indicator: 2W	
Other specifications as per P/N 2VA 980 720-0xx.		

#### TRAILER LAMP FUNCTIONS





### 110mm Round LED Front Direction Indicator/Position Lamp - Clear Lens

Low profile LED front direction indicator/ position lamp (category 1) specifically designed for commercial transport applications. Features high-intensity LEDs and high impact acrylic lens for superior light output and impact resistance.

Part Number	2BE 959 932-161	CHROME BASE
	2BE 959 932-151	BLACK BASE
	2BE 959 932-131	MODULE

Mounting	Mounting only with lens engraving "TOP" located correctly.	
Voltage	Multivolt for optimum brightness at input voltages from 9 to 33 volts.	
Power Consumption	Front direction: 3W	Front position: <1W
Protection	Reverse polarity and 5000 watt Transient Voltage Suppressor (TVS) IP 6K6 (Protection against dust and high pressure water jets) IP 6K7 (Protection against dust and temporary water immersion)	
Cable Length	Pre-wired with 200mm of cable.	
Approval Markings	E24 5851	E4 10R 04-2915

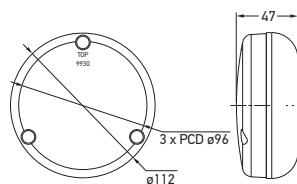
Chrome base image and diagram shown. Pendant mount is also available. Lamp compatible with 12V DC and 24V DC HCS units.



2BE 959 932-161



Lamp shown active



### 110mm Round LED Front Direction Indicator Lamp - Clear Lens

Low profile LED front direction indicator lamp (category 1) specifically designed for commercial transport applications.

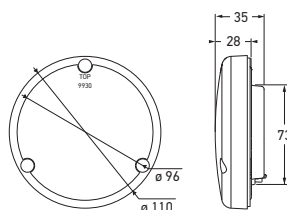
Part Number	2BA 959 932-081	CHROME BASE
	2BA 959 932-071	BLACK BASE
	2BA 959 932-051	MODULE

Power Consumption	3W		
Approval Markings	E24 0023	E4 10R 04-2915	ISO 13207-1

Other specifications as per P/N 2BE 959 932-1xx. Black base image and diagram shown. Pendant mount also available. Lamp compatible with 12V DC and 24V DC HCS units.



2BA 959 932-071



### 110mm Round LED Front Direction Indicator Lamp - Amber Lens

Low profile LED front direction indicator lamp (category 1) specifically designed for commercial transport applications.

Part Number	2BA 959 932-041	CHROME BASE
	2BA 959 932-031	BLACK BASE
	2BA 959 932-011	MODULE

Power Consumption	3W		
Approval Markings	E24 0023	E4 10R 04-2915	ISO 13207-1

Other specifications as per P/N 2BE 959 932-1xx. Module image and diagram shown. Pendant mount is also available. Lamp compatible with 12V DC and 24V DC HCS units.



2BA 959 932-011



ECE APPROVED LED LAMPS

### 110mm Round LED Rear Direction Indicator Lamp - Clear Lens

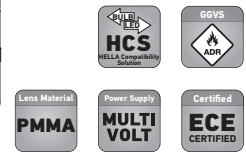
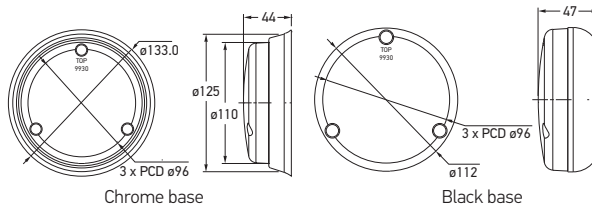
Low profile LED rear direction indicator lamp (category 2a) specifically designed for commercial transport applications. Features high-intensity LEDs and high impact acrylic lens for superior light output and impact resistance.



2BA 959 932-581



2BA 959 932-571



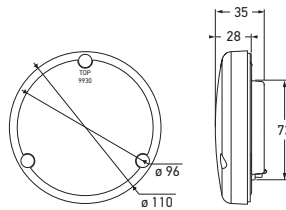
Part Number	2BA 959 932-581	CHROME BASE
	2BA 959 932-571	BLACK BASE
	2BA 959 932-551	MODULE
Mounting	Mounting only with lens engraving "TOP" located correctly.	
Voltage	Multivolt for optimum brightness at input voltages from 9 to 33 volts.	
Power Consumption	3W	
Protection	Reverse polarity and 5000 watt Transient Voltage Suppressor (TVS) IP 6K6 (Protection against dust and high pressure water jets) IP 6K7 (Protection against dust and temporary water immersion)	
Cable Length	Pre-wired with 200mm of cable.	
Approval Markings	E24 0023      E4 10R 04-2915      ISO 13207-1	
Chrome and black base image and diagram shown. Pendant mount is also available. Lamp compatible with 12V DC and 24V DC HCS units.		

### 110mm Round LED Rear Direction Indicator Lamp - Amber Lens

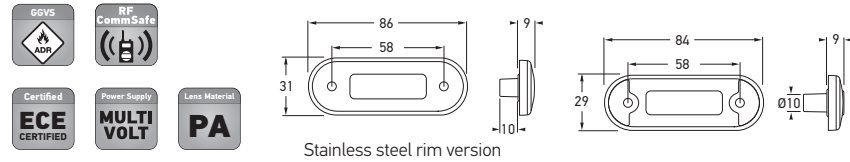
Low profile LED rear direction indicator lamp (category 2a) specifically designed for commercial transport applications. Features high-intensity LEDs and high impact acrylic lens for superior light output and impact resistance.



2BA 959 932-511



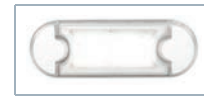
Part Number	2BA 959 932-541	CHROME BASE
	2BA 959 932-531	BLACK BASE
	2BA 959 932-511	MODULE
Mounting	Mounting only with lens engraving "TOP" located correctly.	
Voltage	Multivolt for optimum brightness at input voltages from 9 to 33 volts.	
Power Consumption	3W	
Protection	Reverse polarity and 5000 watt Transient Voltage Suppressor (TVS) IP 6K6 (Protection against dust and high pressure water jets) IP 6K7 (Protection against dust and temporary water immersion)	
Cable Length	Pre-wired with 200mm of cable.	
Approval Markings	E24 0023      E4 10R 04-2915      ISO 13207-1	
Module image and diagram shown. Pendant mount is also available. Lamp compatible with 12V DC and 24V DC HCS units.		



<b>Part Number</b>	<b>BLACK SCREW CAPS</b>		
	2PF 959 855-201	2PF 959 855-207 (Pack of 24)	500MM CABLE
	2PF 959 855-241	2PF 959 855-247 (Pack of 16)	2.5M CABLE
	<b>WHITE SCREW CAPS</b>		
	2PF 959 855-251	2PF 959 855-257 (Pack of 24)	500MM CABLE
Mounting	Flush mount. Suitable for horizontal or vertical mounting.		
Voltage	Multivolt for optimum brightness at input voltage from 9 to 33 volts.		
Power Consumption	0.5W		
Protection	Reverse polarity and transient spike protection. IP 6K7 (Protection against dust and temporary water immersion) IP 6K9K (Protection against dust and high-pressure/steam jet cleaning)		
Cable Length	2PF 959 855-2xx 2PF 959 855-24x	Pre-wired with 500mm of sheathed multi-core cable. Pre-wired with 2.5m of sheathed multi-core cable.	
Spare Parts	9AB 959 685-201 9HD 980 858-018	Polished stainless steel rim ECE engraved White screw caps	
Approval Markings	E24 5878      E4 10R 04-2899		

**DuraLED Flush Mount Front  
Position/End Outline Lamp**

White flush mount front position or front end outline LED lamp (FEOL) with optional stainless steel rim. Featuring a low profile ultra durable Grilamid® nylon lens for extreme impact, UV, chemical and stress resistance. Optic appears clear until illuminated.

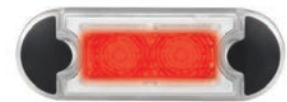


P/N 2PF 959 855-251

<b>Part Number</b>	<b>BLACK SCREW CAPS</b>		
	2XS 959 855-401	2XS 959 855-407 (Pack of 24)	500MM CABLE
	2XS 959 855-441	2XS 959 855-447 (Pack of 16)	2.5M CABLE
	<b>WHITE SCREW CAPS</b>		
	2XS 959 855-451	2XS 959 855-457 (Pack of 24)	500MM CABLE
Approval Markings	E24 5878      E4 10R 04-2899		
Other specifications as per P/N 2PF 959 855-2xx. Diagram shown.			

**DuraLED Flush Mount Rear  
Position/End Outline Lamp**

Red flush mount rear position or rear end outline LED lamp (REOL) with optional stainless steel rim. Featuring a low profile ultra durable Grilamid® nylon lens for extreme impact, UV, chemical and stress resistance. Optic appears clear until illuminated.



P/N 2PF 959 855-451

<b>Part Number</b>	<b>BLACK SCREW CAPS</b>		
	2PS 980 868-201	2PS 980 868-207 (Pack of 24)	500MM CABLE
	2PS 980 868-211	2PS 980 868-217 (Pack of 16)	2.5M CABLE
	<b>WHITE SCREW CAPS</b>		
	2PS 980 868-211	2PS 980 868-217 (Pack of 16)	2.5M CABLE
Approval Markings	E24 0007      E4 10R 04-2899		
Other specifications as per P/N 2PF 959 855-2xx.			

**DuraLED Flush Mount Side Marker  
(Cat. SM1) Lamp**

Amber flush mount side marker lamp (Cat. SM1) with optional stainless steel rim. Featuring a low profile ultra durable Grilamid® nylon lens for extreme impact, UV, chemical and stress resistance. Optic appears clear until illuminated.

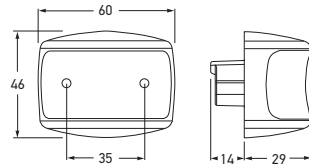


ECE APPROVED LED LAMPS

ECE APPROVED LED LAMPS

**DuraLED Heavy Duty Front Position/  
End Outline Lamp with DT Connector**

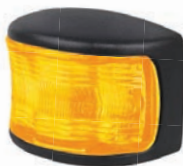
Heavy duty white front position or end outline LED lamp (FEOL) with DT connector and nylon housing. Featuring ultra durable Grilamid® nylon lens for extreme impact, UV, chemical and stress resistance. Optic appears clear until illuminated.



<b>Part Number</b>	<b>2PF 980 990-221</b>	<b>2PF 980 990-227 (Pack of 8)</b>
Mounting	Surface mount. Suitable for horizontal mounting.	
Voltage	Multivolt for optimum brightness at input voltage from 9 to 33 volts.	
Power Consumption	<1W	
Protection	Reverse polarity and transient spike protection. IP 6K7 (Protection against dust and temporary water immersion) IP 6K9K (Protection against dust and high-pressure/steam jet cleaning)	
Spare Parts	9BG 980 996-002    Black housing	9BG 980 996-102    White housing
Approval Markings	A 02 E24 5892    E4 10R 05-3195	

**DuraLED Heavy Duty Side Marker  
(Cat. SM1) Lamp with DT Connector**

Heavy duty amber side marker lamp (Cat. SM1) with DT connector. Featuring ultra durable Grilamid® nylon lens for extreme impact, UV, chemical and stress resistance. Optic appears clear until illuminated.



<b>Part Number</b>	<b>2PS 980 990-301</b>	<b>2PS 980 990-307 (Pack of 8)</b>
Approval Markings	SM1 00 E24 5892    E4 10R 05-3195	
Other specifications as per P/N 2PF 980 990-22x. Diagram shown.		

**DuraLED Heavy Duty Supplementary  
Side Direction Indicator (Cat. 5) Lamp  
with DT Connector**

Heavy duty amber supplementary side direction indicator lamp (Cat. 5) with DT connector. Featuring ultra durable Grilamid® nylon lens for extreme impact, UV, chemical and stress resistance. Optic appears clear until illuminated.



<b>Part Number</b>	<b>2BM 980 990-121</b>	<b>2BM 980 990-127 (Pack of 8)</b>
Approval Markings	5 01 E24 0067    E4 10R 05-3195	
Other specifications as per P/N 2PF 980 990-22x. Diagram shown.		

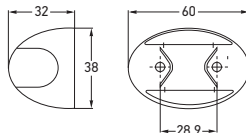
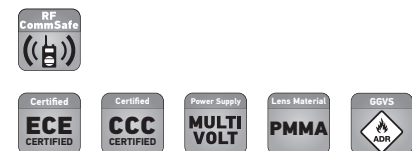
**DuraLED Heavy Duty Rear Position/  
End Outline Lamp with DT Connector**

Heavy duty red rear position or end outline LED lamp (REOL) with DT connector and nylon housing. Featuring ultra durable Grilamid® nylon lens for extreme impact, UV, chemical and stress resistance. Optic appears clear until illuminated.



<b>Part Number</b>	<b>2XS 980 990-621</b>	<b>2XS 980 990-627 (Pack of 8)</b>
Approval Markings	R1 02 E24 5892    E4 10R 05-3195	
Other specifications as per P/N 2PF 980 990-22x. Diagram shown.		

**ECE APPROVED LED LAMPS**



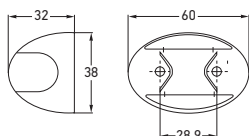
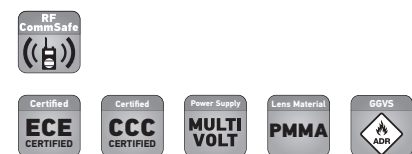
Part Number	2PF 959 570-202 (Pack of 2)	2PF 959 570-207 (Pack of 16)	500MM CABLE
	2PF 959 570-212 (Pack of 2)	2PF 959 570-217 (Pack of 10)	5M CABLE
Mounting	Surface mount. Suitable for horizontal or vertical mounting.		
Voltage	Multivolt for optimum brightness at input voltage from 8 to 28 volts.		
Power Consumption	<1W		
Protection	Reverse polarity protection. IP 6K6 (Protection against dust and high pressure water jets) IP 6K7 (Protection against dust and temporary water immersion)		
Cable Length	2PF 959 570-20x 2PF 959 570-21x	Pre-wired with 500mm of sheathed multi-core cable. Pre-wired with 5m of sheathed multi-core cable.	
Approval Markings	E24 0051	E4 10R 04-2911	

**DuraLED Front Position/End  
Outline Lamp**

White front position or front end outline (FEOL) LED lamp. See page 108 for additional shroud colours.



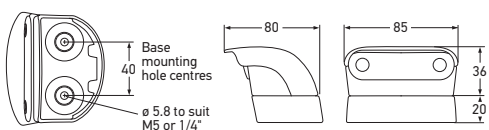
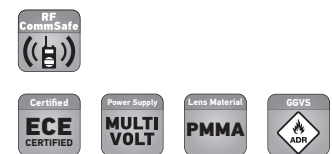
ECE APPROVED LED LAMPS



Part Number	2XA 959 560-401 (Pack of 2)	2XA 959 560-407 (Pack of 16)	500MM CABLE
	2XA 959 560-411 (Pack of 2)	2XA 959 560-417 (Pack of 10)	5M CABLE
Mounting	Surface mount. Suitable for horizontal mounting only.		
Voltage	Multivolt for optimum brightness at input voltage from 8 to 28 volts.		
Power Consumption	<1W		
Protection	Reverse polarity protection. IP 6K6 (Protection against dust and high pressure water jets) IP 6K7 (Protection against dust and temporary water immersion)		
Cable Length	2XA 959 560-40x 2XA 959 560-41x	Pre-wired with 500mm of sheathed multi-core cable. Pre-wired with 5m of sheathed multi-core cable.	
Approval Markings	E4 02 7574	E4 10R 04-2906	

**DuraLED Rear Position/End  
Outline Lamp**

Red rear position or end outline (REOL) LED lamp. See page 108 for additional shroud colours.



Part Number	2KA 959 640-611	2KA 959 640-617 (Pack of 8)	500MM CABLE
	2KA 959 640-601	2KA 959 640-607 (Pack of 8)	2.5M CABLE
	2KA 959 640-101	2KA 959 640-102 (Pack of 3)	LIGHT MODULE
Voltage	Multivolt for optimum brightness at input voltage from 10 to 33 volts.		
Power Consumption	<1W		
Protection	Reverse polarity protection. IP 6K6 (Protection against dust and high pressure water jets) IP 6K7 (Protection against dust and temporary water immersion)		
Cable Length	2KA 959 640-60x/-10x 2KA 959 640-61x	Pre-wired with 2.5m of sheathed multi-core cable. Pre-wired with 500mm of sheathed multi-core cable.	
Approval Markings	E4 4068	E4 10R 04-2906	
Spare Part	8HG 959 647-001	Mounting kit	

**LED Number Plate Lamp**

White LED number plate lamp.

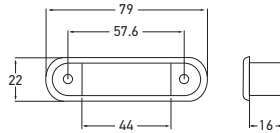


Two lamps required for ECE compliance when mounted on either side of number plate. Three lamps required for ECE compliance when mounted above the number plate.

ECE APPROVED LED LAMPS

### LED Front Position/End Outline Lamp

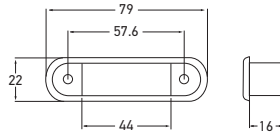
Recess mount white front position or front end outline (FEOL) LED lamp.



Part Number	2PF 959 590-202 (Pack of 2)	2PF 959 590-207 (Pack of 30)	500MM CABLE
	2PF 959 590-212 (Pack of 2)	2PF 959 590-217 (Pack of 10)	5M CABLE
Mounting	Suitable for horizontal or vertical mounting.		
Voltage	Multivolt for optimum brightness at input voltage from 8 to 28 volts.		
Power Consumption	<1W		
Protection	Reverse polarity protection. IP 6K6 (Protection against dust and high pressure water jets) IP 6K7 (Protection against dust and temporary water immersion)		
Cable Length	2PF 959 590-20x 2PF 959 590-21x	Pre-wired with 500mm of sheathed multi-core cable. Pre-wired with 5m of sheathed multi-core cable.	
Approval Markings	Ⓔ24 0054	Ⓔ4 10R 04-2911	

### LED Rear Position/End Outline Lamp

Recess mount red rear end outline (REOL) or rear position LED lamp.



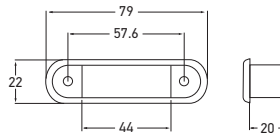
Part Number	2XA 959 790-401 (Pack of 2)	2XA 959 790-407 (Pack of 30)	500MM CABLE
	2XA 959 790-411 (Pack of 2)	2XA 959 790-417 (Pack of 10)	5M CABLE
Mounting	Suitable for horizontal or vertical mounting.		
Voltage	Multivolt for optimum brightness at input voltage from 8 to 28 volts.		
Power Consumption	<1W		
Protection	Reverse polarity protection. IP 6K6 (Protection against dust and high pressure water jets) IP 6K7 (Protection against dust and temporary water immersion)		
Cable Length	2XA 959 790-40x 2XA 959 790-41x	Pre-wired with 500mm of sheathed multi-core cable. Pre-wired with 5m of sheathed multi-core cable.	
Approval Markings	Ⓔ4 02 7597	Ⓔ4 10R 04-2906	

### LED Side Marker Lamp

Recess mount amber and clear SM1 side marker LED lamp.

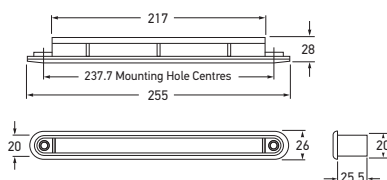


2PS 959 788-102



Part Number	2PS 959 788-002 (Pack of 2)	2PS 959 788-007 (Pack of 30)	AMBER LENS
	2PS 959 788-102 (Pack of 2)	2PS 959 788-107 (Pack of 30)	CLEAR LENS
Mounting	Suitable for horizontal mounting only.		
Voltage	Multivolt for optimum brightness at input voltage from 8 to 28 volts.		
Power Consumption	<1W		
Protection	Reverse polarity protection. IP 6K6 (Protection against dust and high pressure water jets) IP 6K7 (Protection against dust and temporary water immersion)		
Cable Length	Pre-wired with 500mm of sheathed multi-core cable.		
Approval Markings	Ⓔ24 0004	Ⓔ4 10R 04-2911	

ECE APPROVED LED LAMPS



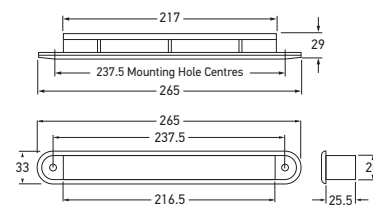
Part Number	12 VOLT	24 VOLT	CLEAR LENS
	2DA 959 071-077	2DA 959 071-277	
2DA 959 071-577	2DA 959 071-777		RED LENS
		2DA 959 071-757 (Wide Rim)	
Mounting	Suitable for horizontal mounting only. Two hole recess mount.		
Power Consumption	2W		
Protection	Reverse polarity protection. IP 6K7 (Protection against dust and temporary water immersion) IP 6K9K (Protection against dust and high pressure/steam jet cleaning)		
Cable Length	Pre-wired with 2.5m of sheathed multi-core cable.		
Approval Markings	E4 02 7547 SAE U3 97 DOT		
CCC marked versions are available upon request.			

LED Spoiler Centre High Mount Stop Lamp

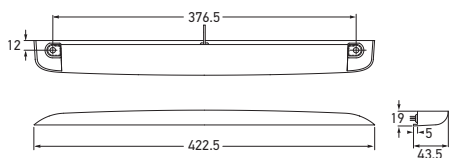
Spoiler or exterior mounted 12 LED centre high mount stop lamp, available with a red or clear lens. Pack of 10 lamps.



2DA 959 071-577 2DA 959 071-757 (Wide rim)



Wide rim diagram shown.



Part Number	2DA 959 580-551	CLEAR LENS
	2DA 959 580-151	
Mounting	Suitable for horizontal mounting only.	
Voltage	12V DC	
Power Consumption	<3W	
Protection	Reverse polarity protection.	
Cable Length	Pre-wired with 3.5m of cable.	
Approval Markings	E4 02 7587 SAE U3 02 DOT	

LED Spoiler Centre High Mount Stop Lamp - 12 Volt

Spoiler mounted 12 LED centre high mount stop lamp, available with a red or clear high impact acrylic lens.



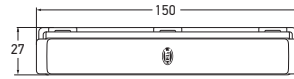
2DA 959 580-551

ECE APPROVED LED LAMPS

ECE APPROVED LED LAMPS

### LED Daytime Running Lamps - 0°

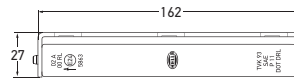
Forward facing signal lamps, designed to be mounted on vehicles with flat fronts, or on motorbikes. The lamps are an Easy-Fit installation, usually requiring no extra parts. Once the wiring is complete and the bracket is fitted, the LED lamp easily clips into place and installation is complete.



Part Number	LAMP MODULE		KIT	
		2PT 980 970-021	2PT 980 970-821	12 VOLT
		2PT 980 970-521	2PT 980 970-871	24 VOLT
Mounting	Suitable for horizontal mounting only.			
Power Consumption	2W			
Protection	Reverse polarity protection. IP 6K7 (Protection against dust and temporary water immersion) IP 6K9K (Protection against dust and high pressure/steam jet cleaning).			
Cable Length	Single lamps are pre-wired with 2.5m of sheathed multi-core cable. Lamps supplied with kit are pre-wired with 2.8m of sheathed multi-core cable.			
Spare Parts	8HG 980 875-101 5DF 980 816-051 5DF 980 816-551	Brackets (LH/RH) LED DRL/PO Control Unit (12 Volt) LED DRL/PO Control Unit (24 Volt)		
Approval Markings	E24 5875	SAE P 14 DOT DRL		
Kit Contents	2PT 980 970-821/...-871 2 x LED daytime running lamps 2 x Mounting brackets 6 x Mounting screws 1 x Changeover relay 1 x Instruction sheet 10 x Cable ties 4 x Accessory cable looms			







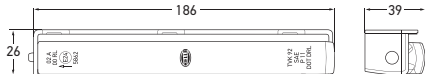
### LED Daytime Running Lamps - 15°

A lens angle of 15 degrees allows installation as close as possible to the corners of a modern motor vehicle. These lamps were designed to fit the curved bumpers of modern vehicles to give the look of Original Equipment fitment. The lamps have extremely low power consumption at 2W per lamp and high impact acrylic lenses to protect against impact damage.



Part Number	LAMP MODULE		KIT	
		2PT 980 860-001	2PT 980 860-801	12 VOLT
		2PT 980 860-501	2PT 980 860-851	24 VOLT
Mounting	Suitable for horizontal mounting only.			
Power Consumption	2W			
Protection	Reverse polarity protection. IP 6K7 (Protection against dust and temporary water immersion) IP 6K9K (Protection against dust and high pressure/steam jet cleaning).			
Cable Length	Single lamps are pre-wired with 2.5m of sheathed multi-core cable. Lamps supplied with kit are pre-wired with 2.8m of sheathed multi-core cable.			
Spare Parts	8HG 980 864-101 5DF 980 816-001 5DF 980 816-501	Brackets (LH/RH) LED DRL/PO Control Unit (12 Volt) LED DRL/PO Control Unit (24 Volt)		
Approval Markings	E24 5863	SAE P 11 DOT DRL		
Kit Contents	2PT 980 860-801/...-851 2 x LED daytime running lamps 2 x Mounting brackets 6 x Mounting screws 1 x Changeover relay 1 x Instruction sheet 10 x Cable ties 4 x Accessory cable looms			

ECE APPROVED LED LAMPS

Part Number	LAMP MODULE	KIT	
		2PT 980 850-001	2PT 980 850-801
	2PT 980 850-501	2PT 980 850-851	24 VOLT

Mounting: Suitable for horizontal mounting only.

Power Consumption: 2W

Protection: Reverse polarity protection.  
IP 6K7 (Protection against dust and temporary water immersion)  
IP 6K9K (Protection against dust and high pressure/steam jet cleaning).

Cable Length: Single lamps are pre-wired with 2.5m of sheathed multi-core cable.  
Lamps supplied with kit are pre-wired with 2.8m of sheathed multi-core cable.

Spare Parts: 8HG 980 854-101 Brackets (LH/RH)  
5DF 980 816-001 LED DRL/PO Control Unit (12 Volt)  
5DF 980 816-501 LED DRL/PO Control Unit (24 Volt)

Approval Markings: E24 5862 SAE P 11 DOT DRL

Kit Contents: 2PT 980 850-801/...-851  
2 x LED daytime running lamps  
2 x Mounting brackets  
6 x Mounting screws  
1 x Changeover relay  
1 x Instruction sheet  
10 x Cable ties  
4 x Accessory cable looms

LED Daytime Running Lamps - 30°

A lens angle of 30 degrees allows installation as close as possible to the corners of a modern motor vehicle. These lamps were designed to fit the curved bumpers of modern vehicles to give the look of Original Equipment fitment. The lamps have extremely low power consumption at 2W per lamp and high impact acrylic lenses to protect against impact damage.



ECE APPROVED LED LAMPS

LED DRL/PO Control Unit

A control unit that dims the light output of LED daytime running lamps to front position/park function level.



Part Number	12 VOLT	24 VOLT	
	5DF 980 816-001	5DF 980 816-501	5DF 980 816-551
5DF 980 816-051	5DF 980 816-551		0°

Requirement: One unit is required per pair of LED daytime running lamps.

**RECOMMENDED INSTALLATION DIAGRAM FOR WIRING**

**WIRING SPECIFICATIONS**

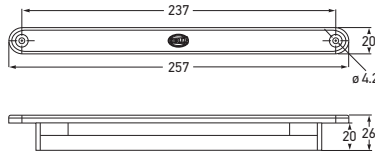
Terminal Number	Connect to
30	Ignition (+)
85	Earth return (-)
86	Front position or headlamps (+)
87A	LED daytime running lamps (+)



ECE APPROVED LED LAMPS

### LED Daytime Running Lamp

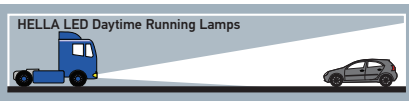
ECE certified LED daytime running lamp with clear Grilamid® lens. Complete with mounting screws and clear screw caps. Kit contains 2 LED lamps and a changeover relay.



Part Number	LAMP MODULE	KIT	
		2PT 980 680-001	2PT 980 680-801
	2PT 980 680-501	2PT 980 680-851	24 VOLT
Mounting	Suitable for horizontal mounting only. Two hole recess mount.		
Power Consumption	2W		
Protection	Reverse polarity protection. IP 6K7 (Protection against dust and temporary water immersion) IP 6K9K (Protection against dust and high pressure/steam jet cleaning).		
Cable Length	Pre-wired with 2.5m of sheathed multi-core cable.		
Approval Markings	E24 0001		



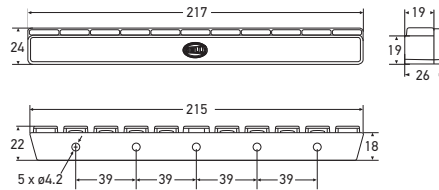
Low Beam  
Designed to light the road at night without causing glare to other road users.



HELLA LED Daytime Running Lamps  
Designed to increase the visibility (conspicuity) of your vehicle during daytime.

### LED Daytime Running Lamp

ECE certified LED daytime running lamp with clear Grilamid® lens. Complete with mounting frame and screws. Kit contains 2 LED lamps and a changeover relay.

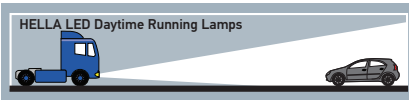


Bracket

Part Number	LAMP MODULE	KIT	
		2PT 980 680-101	2PT 980 680-821
	2PT 980 680-601	2PT 980 680-861	24 VOLT
Mounting	Suitable for horizontal mounting only.		
Power Consumption	2W		
Protection	Reverse polarity protection. IP 6K7 (Protection against dust and temporary water immersion) IP 6K9K (Protection against dust and high pressure/steam jet cleaning).		
Cable Length	Pre-wired with 2.5m of sheathed multi-core cable.		
Approval Markings	E24 0001		



Low Beam  
Designed to light the road at night without causing glare to other road users.



HELLA LED Daytime Running Lamps  
Designed to increase the visibility (conspicuity) of your vehicle during daytime.



## LED Daytime Running Lamps

LED Daytime Running Lamps are forward facing Signal Lamps that significantly enhance the visibility of your vehicle during daylight hours to prevent vehicle crashes by 'accidental oversight'.



Technology with Vision



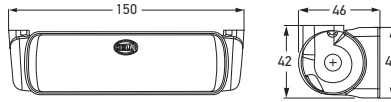
ECE APPROVED LED LAMPS

**LED Daytime Running Lamp**

ECE certified LED daytime running lamp with Grilamid® lens.

**2PT 980 670-801:** Includes 2 LED lamps with professional wiring harness and connectors, universal mounting brackets, mounting screws and full instructions.

**2PT 980 670-811:** Includes 2 LED lamps complete with 2.5m three-core sheathed cable, universal mounting brackets, mounting screws and full instructions.



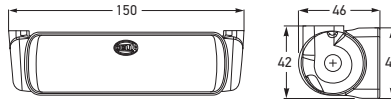
<b>Part Number</b>	<b>2PT 980 670-001</b>	
	<b>KITS</b>	
	<b>2PT 980 670-801 (IAM Kit)</b>	<b>2PT 980 670-811 (SOE Kit)</b>
Mounting	Suitable for horizontal, pendant or upright mounting.	
Voltage	Multivolt for optimum brightness at input voltages from 9 to 33 volts.	
Power Consumption	<2W	
Protection	Reverse polarity and spike protected. IP 6K7 (Protection against dust and temporary water immersion) IP 6K9K (Protection against dust and high pressure/steam jet cleaning)	
Cable Length	2PT 980 670-001/...801 2PT 980 670-811	Pre-wired with 500mm of sheathed multi-core cable. Pre-wired with 2.5m of sheathed multi-core cable.
Approval Markings	E24 0002	E4 10R 04-2902

**LED Daytime Running Lamp - 12 Volt**

ECE certified LED front position/daytime running lamp with Grilamid® lens.

**2PT 980 670-851:** Includes 2 LED lamps with professional wiring harness and connectors, universal mounting brackets, mounting screws and full instructions.

**2PT 980 670-931:** Includes 2 LED lamps complete with 2.5m three-core sheathed cable, universal mounting brackets, mounting screws and full instructions.



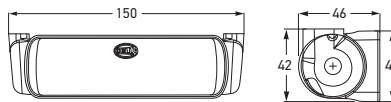
<b>Part Number</b>	<b>2PT 980 670-501</b>	
	<b>KITS</b>	
	<b>2PT 980 670-851 (IAM Kit)</b>	<b>2PT 980 670-931 (SOE Kit)</b>
Mounting	Suitable for horizontal, pendant or upright mounting.	
Voltage	12V DC	
Power Consumption	3W	
Protection	Reverse polarity and spike protected. IP 6K7 (Protection against dust and temporary water immersion) IP 6K9K (Protection against dust and high pressure/steam jet cleaning)	
Cable Length	2PT 980 670-501/...851 2PT 980 670-931	Pre-wired with 500mm of sheathed multi-core cable. Pre-wired with 2.5m of sheathed multi-core cable.
Approval Markings	E24 0002	E4 10R 04-2902

**LED Front Position/Daytime Running Lamp - 12 Volt**

ECE certified LED front position/daytime running lamp with Grilamid® lens.

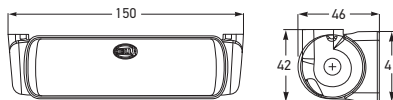
**2PT 980 670-881:** Includes 2 LED lamps with professional wiring harness and connectors, universal mounting brackets, mounting screws and full instructions.

**2PT 980 670-901:** Includes 2 LED lamps complete with 2.5m three-core sheathed cable, universal mounting brackets, mounting screws and full instructions.



<b>Part Number</b>	<b>2PT 980 670-551</b>	
	<b>KITS</b>	
	<b>2PT 980 670-881 (IAM Kit)</b>	<b>2PT 980 670-901 (SOE Kit)</b>
Mounting	Suitable for horizontal, pendant or upright mounting.	
Voltage	12V DC	
Power Consumption	Daytime running lamp: 3W      Front position: 1W	
Protection	Reverse polarity and spike protected. IP 6K7 (Protection against dust and temporary water immersion) IP 6K9K (Protection against dust and high pressure/steam jet cleaning)	
Cable Length	2PT 980 670-551/...881 2PT 980 670-901	Pre-wired with 500mm of sheathed multi-core cable. Pre-wired with 2.5m of sheathed multi-core cable.
Approval Markings	E24 0044      E24 0002	E4 10R 04-2902

ECE APPROVED LED LAMPS



Part Number	2PT 980 670-601	
	KITS	
	2PT 980 670-861 (IAM Kit)	2PT 980 670-941 (SOE Kit)
Mounting	Suitable for horizontal, pendant or upright mounting.	
Voltage	24V DC	
Power Consumption	3W	
Protection	Reverse polarity and spike protected. IP 6K7 (Protection against dust and temporary water immersion) IP 6K9K (Protection against dust and high pressure/steam jet cleaning)	
Cable Length	2PT 980 670-601/...861 2PT 980 670-941	Pre-wired with 500mm of sheathed multi-core cable. Pre-wired with 2.5m of sheathed multi-core cable.
Approval Markings	E24 0002	E4 10R 04-2902

LED Daytime Running Lamp - 24 Volt

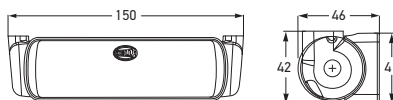
ECE certified LED daytime running lamp with Grilamid® lens.

**2PT 980 670-861:** Includes 2 LED lamps with professional wiring harness and connectors, universal mounting brackets mounting screws and full instructions.

**2PT 980 670-941:** Includes 2 LED lamps complete with 2.5m three-core sheathed cable, universal mounting brackets, mounting screws and full instructions.



ECE APPROVED LED LAMPS



Part Number	2PT 980 670-651	
	KITS	
	2PT 980 670-891 (IAM Kit)	2PT 980 670-911 (SOE Kit)
Mounting	Suitable for horizontal, pendant or upright mounting.	
Voltage	24V DC	
Power Consumption	Daytime running lamp: 3W Front position: 1W	
Protection	Reverse polarity and spike protected. IP 6K7 (Protection against dust and temporary water immersion) IP 6K9K (Protection against dust and high pressure/steam jet cleaning)	
Cable Length	2PT 980 670-651/...891 2PT 980 670-911	Pre-wired with 500mm of sheathed multi-core cable. Pre-wired with 2.5m of sheathed multi-core cable.
Approval Markings	E24 0044	E24 0002 E4 10R 04-2902

LED Front Position/Daytime Running Lamp - 24 Volt

ECE certified LED front position/daytime running lamp with Grilamid® lens.

**2PT 980 670-891:** Includes 2 LED lamps with professional wiring harness and connectors, universal mounting brackets, mounting screws and full instructions.

**2PT 980 670-911:** Includes 2 LED lamps complete with 2.5m three-core sheathed cable, universal mounting brackets, mounting screws and full instructions.



Part Number	Function	ECE Regulation Number	ECE Type Approval Number	EMC Type Approval Number
<b>LED Light Bar 350</b>				
1FJ 958 040-001	Headlamp Driving Beam	ECE Reg. 112/01 Cat. HR PL	E24 0008	E4 10R 04-2909
1FJ 958 040-051	Headlamp Driving Beam	ECE Reg. 112/01 Cat. HR PL	E24 0009	E4 10R 04-2909
1FJ 958 040-072	Headlamp Driving Beam	ECE Reg. 112/01 Cat. HR PL	E24 0009	E4 10R 04-2909
1FJ 958 040-082	Headlamp Driving Beam	ECE Reg. 112/01 Cat. HR PL	E24 0009	E4 10R 04-2909
<b>LED Light Bar 470</b>				
1FJ 958 130-111	Headlamp Driving Beam	ECE Reg. 112/01 Cat. HR PL	E24 0012	E4 10R 05-1947
1FJ 958 130-011	Headlamp Driving Beam	ECE Reg. 112/01 Cat. HR PL	E24 0013	E4 10R 05-1947
<b>83mm Round LED Lamps</b>				
2BE 980 69x-xxx	Front Direction Indicator/Daytime Running Lamp	ECE Reg. 6/01 Cat. 1/ECE Reg. 7/02 Cat. A/ECE Reg. 87/00 Cat. RL	E24 5854	E4 10R 04-2907
2BE 980 69x-30x	Front Direction Indicator/Front Position Lamp	ECE Reg. 6/01 Cat. 1/ECE Reg. 7/02 Cat. A	E24 5854	E4 10R 04-2907
2PT 980 69x-60x	Daytime Running Lamp	ECE Reg. 87/00 Cat. RL	E24 5854	E4 10R 04-2907
2SD 959 010-20x	Stop/Rear Position/Rear Direction Indicator Lamp	ECE Reg. 7/02 Cat. S1/ECE Reg. 7/02 Cat. R/ECE Reg. 6/01 Cat. 2a	E9 1538	E4 10R 04-2741
2SD 959 010-40x	Stop/Rear Position/Rear Direction Indicator Lamp	ECE Reg. 7/02 Cat. S1/ECE Reg. 7/02 Cat. R/ECE Reg. 6/01 Cat. 2a	E9 1538	E4 10R 04-2741
2SB 959 010-00x	Stop/Rear Position Lamp	ECE Reg. 7/02 Cat. S1/ECE Reg. 7/02 Cat. R	E4 11391	E4 10R 04-2741
2BA 959 011-00x	Rear Direction Indicator Lamp	ECE Reg. 6/01 Cat. 2a	E4 11391	E4 10R 04-2741
2SB 959 010-30x	Rear Direction Indicator Lamp	ECE Reg. 6/01 Cat. 2a	E4 12373	E4 10R 04-2741
2BA 959 011-30x	Stop/Rear Position Lamp	ECE Reg. 7/02 Cat. S1/ECE Reg. 7/02 Cat. R	E4 12373	E4 10R 04-2741
2ZR 959 010-50x	Reversing Lamp	ECE Reg. 23/00 Cat. AR	E4 11391	E4 10R 04-2741
2NE 959 011-50x	Rear Fog Lamp	ECE Reg. 38/00 Cat. F1	E4 11391	E4 10R 04-2741
<b>LED Slim Surface Mount</b>				
2BA 980 888-xxx	Front Direction Indicator Lamp Horizontal Mount	ECE Reg. 6/01 Cat. 1	E24 5869	E4 10R 04-2910
2BA 980 888-xxx	Front Direction Indicator Lamp Vertical Mount	ECE Reg. 6/01 Cat. 1	E24 5890	E4 10R 04-2910
2BA 980 888-xxx	Rear Direction Indicator Lamp	ECE Reg. 6/01 Cat. 2a	E24 5891	E4 10R 04-2910
2SB 980 887-xxx	Stop/Rear Position Lamp	ECE Reg. 7/02 Cat. S1/ECE Reg. 7/02 Cat. R	E24 5891	E4 10R 04-2913
2DA 980 887-xxx	Auxiliary Stop Lamp	ECE Reg. 7 Cat. S3	E24 0087	E4 10R 04-2910
2NE 980 889-xxx	Rear Fog Lamp	ECE Reg. 38/00 Cat. F1	E24 0010	E4 10R 04-2910
2ZR 980 889-xxx	Reversing Lamp Horizontal Mount	ECE Reg. 23/00 Cat. AR	E24 0027	N/A
2ZR 980 889-xxx	Reversing Lamp Vertical Mount	ECE Reg. 23/00 Cat. AR	E24 0028	N/A

Part Number	Function	ECE Regulation Number	ECE Type Approval Number	EMC Type Approval Number
<b>LED Slim Surface Mount</b>				
2PT 980 880-xxx	Front Position/Daytime Running Lamp	ECE Reg. 7/02 Cat. A/ECE Reg. 87/00 Cat. RL	E24 5869	N/A
<b>EuroLED Series</b>				
2SB 959 821-6xx	Stop/Rear Position Lamp	ECE Reg. 7/02 Cat. S1/ECE Reg. 7/02 Cat. R	E4 10208	E4 10R 04-2894
2BA 959 822-6xx	Rear Direction Indicator Lamp	ECE Reg. 6/01 Cat. 2a	E4 10208	E4 10R 04-2742
2NE 959 821-2xx	Rear Fog Lamp	ECE Reg. 38/00 Cat. F	E4 10208	E4 10R 04-2894
2ZR 959 820-6xx	Reversing Lamp	ECE Reg. 23/00 Cat. AR	E4 10208	E4 10R 04-2894
2SB 959 020-6xx	Stop/Rear Position Lamp	ECE Reg. 7/02 Cat. S1/ECE Reg. 7/02 Cat. R	E4 10208	E4 10R 04-2896
2BA 959 021-6xx	Rear Direction Indicator Lamp	ECE Reg. 6/01 Cat. 2a	E4 10208	E4 10R 04-2896
<b>DuraLED Series</b>				
2SB 980 606-xxx	Stop/Rear Position Lamp	ECE Reg. 7/02 Cat. S1/ECE Reg. 7/02 Cat. R	E24 5850	E4 10R 04-2891
2BA 980 607-xxx	Rear Direction Indicator Lamp	ECE Reg. 6/01 Cat. 2a	E24 5850	E4 10R 04-2892
2ZR 980 605-xxx	Reversing Lamp	ECE Reg. 23/00 Cat. AR	E24 5850	E4 10R 04-2891
<b>DuraLED Combi Lamps</b>				
2SK 980 603-xxx	Stop/Rear Position/Rear Direction Indicator/Reversing Lamp	ECE Reg. 7/02 Cat. S1/ECE Reg. 7/02 Cat. R/ECE Reg. 6/01 Cat. 2a/ECE Reg. 23/00 Cat. AR	E24 5870	E4 10R 04-0958
2SK 980 615-xxx	Stop/Rear Position/Rear Direction Indicator/Reversing Lamp	ECE Reg. 7/02 Cat. S1/ECE Reg. 7/02 Cat. R/ECE Reg. 6/01 Cat. 2a/ECE Reg. 23/00 Cat. AR	E24 5870	E4 10R 04-0958
2SD 959 050-401	Stop/Rear Position/Rear Direction Indicator Lamp	ECE Reg. 7/02 Cat. S1/ECE Reg. 7/02 Cat. R/ECE Reg. 6/01 Cat. 2a	E4 10176	E4 10R 04-2734
2SD 959 050-001	Stop/Rear Position/Rear Direction Indicator Lamp	ECE Reg. 7/02 Cat. S1/ECE Reg. 7/02 Cat. R/ECE Reg. 6/01 Cat. 2a	E4 10176	E4 10R 04-2895
<b>DuraLED Combi-S Lamps</b>				
2SK 980 613-501	Stop/Rear Position/Rear Direction Indicator/Reversing Lamp	ECE Reg. 7/02 Cat. S1/ECE Reg. 7/02 Cat. R/ECE Reg. 6/01 Cat. 2a/ECE Reg. 23/00 Cat. AR	E24 5894	E4 10R 04-2912
2SK 980 602-501	Stop/Rear Position/Rear Direction Indicator/Reversing With DT Connector and Night Light Lamp	ECE Reg. 7/02 Cat. S1/ECE Reg. 7/02 Cat. R/ECE Reg. 6/01 Cat. 2a/ECE Reg. 23/00 Cat. AR	E24 5894	E4 10R 04-2912
2SD 980 613-211	Stop/Rear Position/Rear Direction Indicator Lamp	ECE Reg. 7/02 Cat. S1/ECE Reg. 7/02 Cat. R/ECE Reg. 6/01 Cat. 2a	E24 5883	E4 10R 04-2901
2SD 980 602-211	Stop/Rear Position/Rear Direction Indicator Lamp	ECE Reg. 7/02 Cat. S1/ECE Reg. 7/02 Cat. R/ECE Reg. 6/01 Cat. 2a	E24 5883	E4 10R 04-2901
<b>DuraLED Combi-R Lamps</b>				
2VA 980 710-xxx	Stop/Rear Position/Rear Direction Indicator Lamp with Reflector	ECE Reg. 7/02 Cat. S1/ECE Reg. 7/02 Cat. R/ECE Reg. 6/01 Cat. 2a/ECE Reg. 3/02 Cat. IA	E24 5882	E4 10R 04-2900

## ECE APPROVED LED LAMPS

Part Number	Function	ECE Regulation Number	ECE Type Approval Number	EMC Type Approval Number
<b>LED Combination Trailer Lamps</b>				
2VA 980 720-00x	Stop/Rear Position/Rear Direction Indicator Lamp with Reflector	ECE Reg. 7/02 Cat. S1/ECE Reg. 7/02 Cat. R/ECE Reg. 6/01 Cat. 2a/ECE Reg. 3/02 Cat. IA	E24 5860	E4 10R 05-3262
2VB 980 720-xxx	Stop/Rear Position/Rear Direction Indicator Lamp with Reflector and Number Plate Function	ECE Reg. 7/02 Cat. S1/ECE Reg. 7/02 Cat. R/ECE Reg. 6/01 Cat. 2a/ECE Reg. 3/02 Cat. IA/ECE Reg. 4/00 Cat. L	E24 5860	E4 10R 05-3262
<b>110mm Round LED Lamps</b>				
2BE 959 932-xxx	Front Direction Indicator/Front Position Lamp	ECE Reg. 6/01 Cat. 1/ECE Reg. 7/02 Cat. A	E24 5851	E4 10R 04-2915
2BA 959 932-00x	Front Direction Indicator Lamp	ECE Reg. 6/01 Cat. 1	E24 0023	E4 10R 04-2915
2BA 959 932-5xx	Rear Direction Indicator Lamp	ECE Reg. 6/01 Cat. 2a	E24 0023	E4 10R 04-2915
<b>DuraLED Flush Mount Marker Lamps</b>				
2PF 959 855-2xx	Front Position/End Outline Lamp	ECE Reg. 7/02 Cat. A	E24 5878	E4 10R 04-2899
2PF 959 855-4xx	Rear Position/End Outline Lamp	ECE Reg. 7/02 Cat. R	E24 5878	E4 10R 04-2899
2PS 980 868-2xx	Side Marker Lamp	ECE Reg. 91/00 Cat. SM1	E24 0007	E4 10R 04-2899
<b>DuraLED Heavy Duty Surface Mount Marker Lamps</b>				
2PF 980 990-22x	Front Position/End Outline Lamp	ECE Reg. 7/02 Cat. A	A 02 E24 5892	E4 10R 05-3195
2PS 980 990-30x	Side Marker Lamp	ECE Reg. 91/00 Cat. SM1	SM1 00 E24 5892	E4 10R 05-3195
2BM 980 990-12x	Supplementary Side Direction Indicator Lamp	ECE Reg. 6/01 Cat. 5	5 01 E24 5892	E4 10R 05-3195
2XS 980 990-62x	Rear Position/End Outline Lamp	ECE Reg. 7/02 Cat. R	R1 02 E24 5892	E4 10R 05-3195
<b>DuraLED Surface Mount Marker Lamps</b>				
2PF 959 570-2xx	Front Position/End Outline Lamp	ECE Reg. 7/02 Cat. A	E24 0051	E4 10R 04-2911
2XA 959 560-4xx	Rear Position/End Outline Lamp	ECE Reg. 7/02 Cat. R	E4 02 7574	E4 10R 04-2906
<b>Number Plate Lamps</b>				
2KA 959 640-xxx	Rear Registration Plate Lamp	ECE Reg. 4/00 Cat. L	E4 4068	E4 10R 04-2906
<b>Recess Mount Marker Lamps</b>				
2PF 959 590-2xx	Front Position/End Outline Lamp	ECE Reg. 7/02 Cat. A	E24 0054	E4 10R 04-2911
2XA 959 790-4xx	Rear Position/End Outline Lamp	ECE Reg. 7/02 Cat. R	E4 02 7957	E4 10R 04-2906
2PS 959 788-xxx	Side Marker Lamp	ECE Reg. 91/00 Cat. SM1	E24 0004	E4 10R 04-2911
<b>1x12 Centre High Mount Stop Lamps</b>				
2DA 959 071-xxx	Stop Lamp	ECE Reg. 7 Cat S3	E4 02 7547	N/A
<b>580 Series Centre High Mount Stop Lamps</b>				
2DA 959 580-xxx	Stop Lamp	ECE Reg. 7 Cat S3	E4 02 7587	N/A

Part Number	Function	ECE Regulation Number	ECE Type Approval Number	EMC Type Approval Number
<b>LED Daytime Running Lamps</b>				
2PT 980 970-xxx	Front Position/Daytime Running Lamp	ECE Reg. 7/02 Cat. A/ECE Reg. 87/00 Cat. RL	E24 5875	N/A
2PT 980 860-xxx	Front Position/Daytime Running Lamp	ECE Reg. 7/02 Cat. A/ECE Reg. 87/00 Cat. RL	E24 5863	N/A
2PT 980 850-xxx	Front Position/Daytime Running Lamp	ECE Reg. 7/02 Cat. A/ECE Reg. 87/00 Cat. RL	E24 5862	N/A
2PT 980 680-xxx	Daytime Running Lamp	ECE Reg. 87/00 Cat. RL	E24 0001	N/A
2PT 980 670-xxx	Daytime Running Lamp	ECE Reg. 87/00 Cat. RL	E24 0002	E4 10R 04-2902
2PT 980 670-xxx	Front Position/Daytime Running Lamp	ECE Reg. 7/02 Cat. A/ECE Reg. 87/00 Cat. RL	E24 0002 E24 0044	E4 10R 04-2902