

HELLA-New Zealand Limited

Head Office: 81-83 Ben Lomond Crescent
Pakuranga, PO Box 51-427
Auckland 2140, New Zealand

Head Office:

Tel: +64 (0) 9 577 0000
Fax: +64 (0) 9 576 2476

Sales/Customer Service:

Tel: +64 (0) 9 577 0366
Fax: +64 (0) 9 576 8202
nzsales@hella.co.nz

HELLA-New Zealand Limited,
81-83 Ben Lomond Crescent, Auckland 2010

www.hella.co.nz

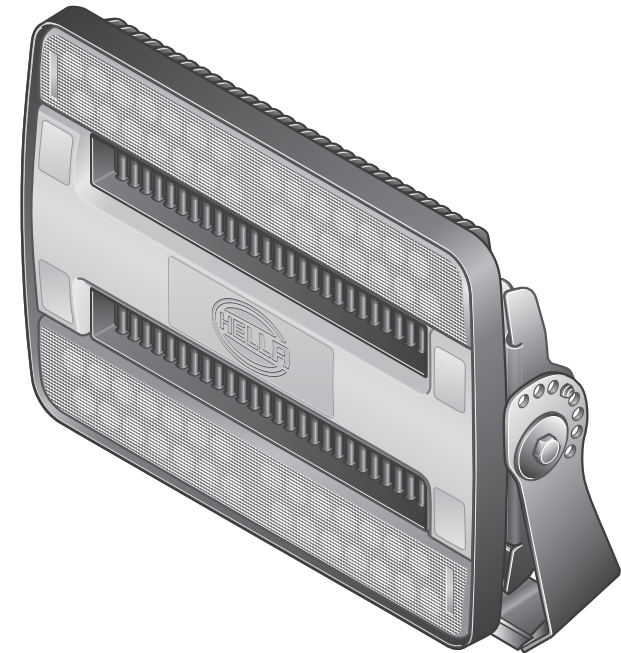
Technology with Vision



INSTALLATION INSTRUCTION

HypaLUME 48 V DC RFCommSafe LED Work Lamp

P/N 1GJ 011 872-XXX



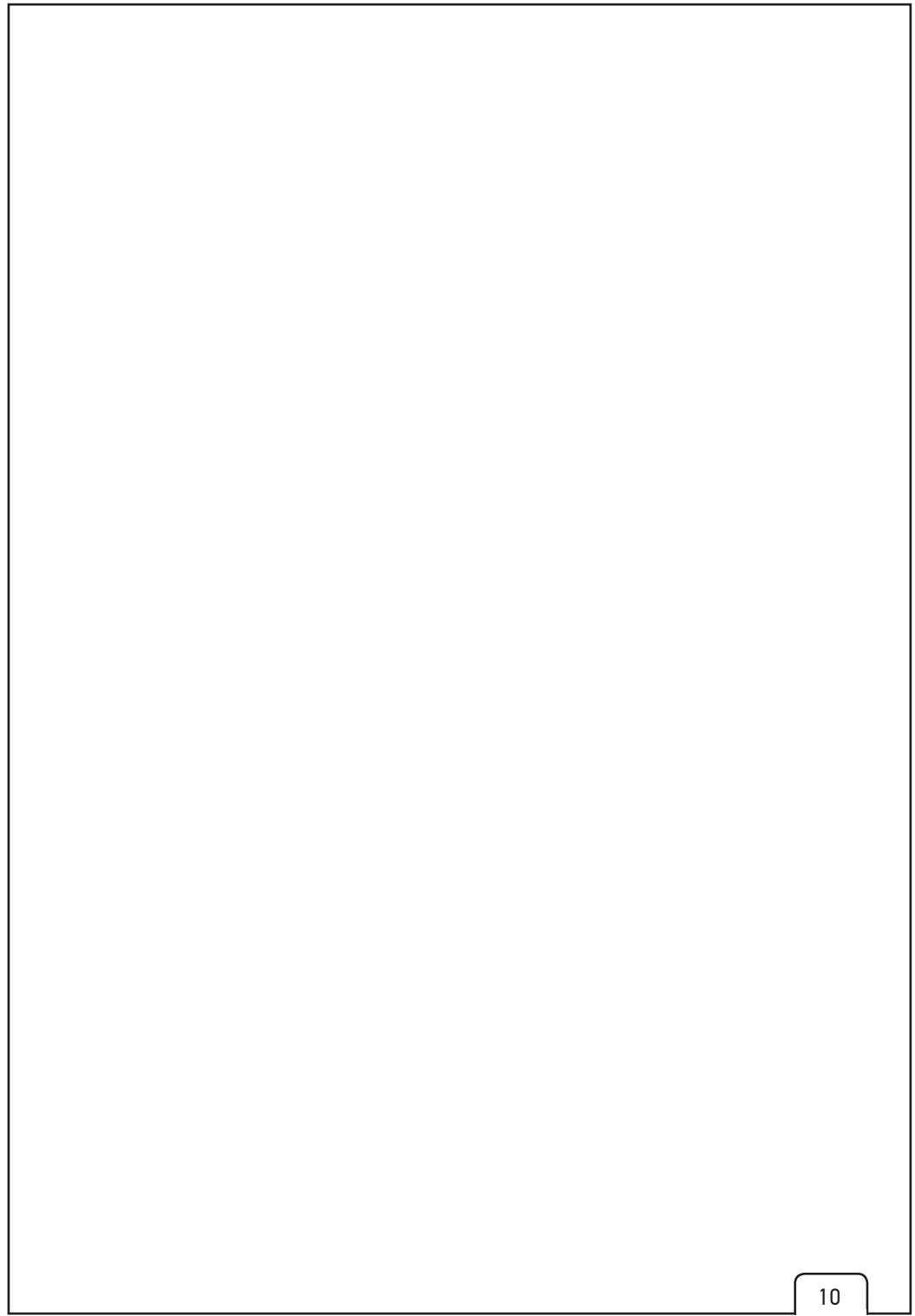
958 315-55 V01

HELLA-New Zealand Limited,
81-83 Ben Lomond Crescent, Auckland 2010

www.hella.co.nz

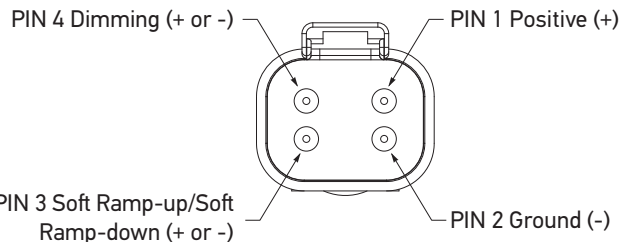
Technology with Vision





DT CONNECTOR

(Viewed from back of lamp)



PIN 1 = + 48 Volt DC

PIN 2 = Ground

PIN 3 = Soft Ramp-up / Soft Ramp-down

- Soft ramp-up starts when PIN 3 is momentarily connected to positive supply = lamp turns ON to the user's target brightness.
- Soft ramp-down starts when PIN 3 is momentarily connected to ground = lamps brightness and power consumption ramps down.
- Soft Ramp-up and Soft Ramp-down takes about 4 seconds.

PIN 4 = Dimming

- Dimming PIN 4 momentarily connected to positive supply = one step increase in brightness.
- Dimming PIN 4 held to positive supply = lamp increases step by step to maximum brightness.
- Dimming PIN 4 momentarily connected to ground = one step decrease in brightness.
- Dimming PIN 4 held to ground = lamp decreases brightness step by step to minimum (10 %) brightness.
- Five brightness levels (100%, 70%, 40%, 20%, 10%)
- The lamp can be dimmed only when the soft start sequence has been completed.
- The lamp remembers the last brightness level set and will restart at this brightness level.

TECHNICAL DATA

Nominal Voltage	Operating Voltage	Input Values	Output Values	Operating Temperatures	IP Protection Class
48 V DC	46 - 53 V DC	6.3 A < 300 W	Full power mode 28, 000 Lumen	-40°C up to +50°C	IP 6K 9K (Protection against splash water and dust)

This product has been designed and certified to the EMC regulations listed below.

CE, RCM and FCC mark compliance, including:

EN 55015: 2013 EN 62493: 2010 EN 61000-6-2: 2005

EN 61000-6-4: 2007 plus amendment A1:2011

ISO 13766: 2006 CFR47 Part 15 Sub-part B (unintentional radiators)

PRODUCT LIABILITY

- Local mounting, fitting and operating regulations must be observed.
- Please read all the instructions and safety notes included before using the device.
- We reserve the right to make technical and optical modifications within the course of product improvement.
- Only use original spare parts or spare parts approved by HELLA.
- If you have any questions or installation problems, call HELLA customer services, your wholesaler or contact your specialist garage.
- Work lamp may only be installed with fasteners that are suitable for the product and mounting position
- Claims under guarantee will be void in cases where damage has occurred due to non-observance of these operating instructions! We do not accept liability for consequential damage! We do not accept any liability for material damages or personal injuries which are caused by improper handling or non-observance of the safety information.
- Installation must be undertaken and completed by qualified and trained staff/experts.
- Do NOT attempt to open this lamp. There are no serviceable parts inside.
- Compliance to all Electrical regulations, EMC targets and electrical safety requirements must be confirmed for the installation location/country before installing.

SUBJECT TO ALTERATION WITHOUT NOTICE

EXPLANATION SYMBOLS



Correct



Incorrect



Location/Position
Arrow



Not Allowed



Warning



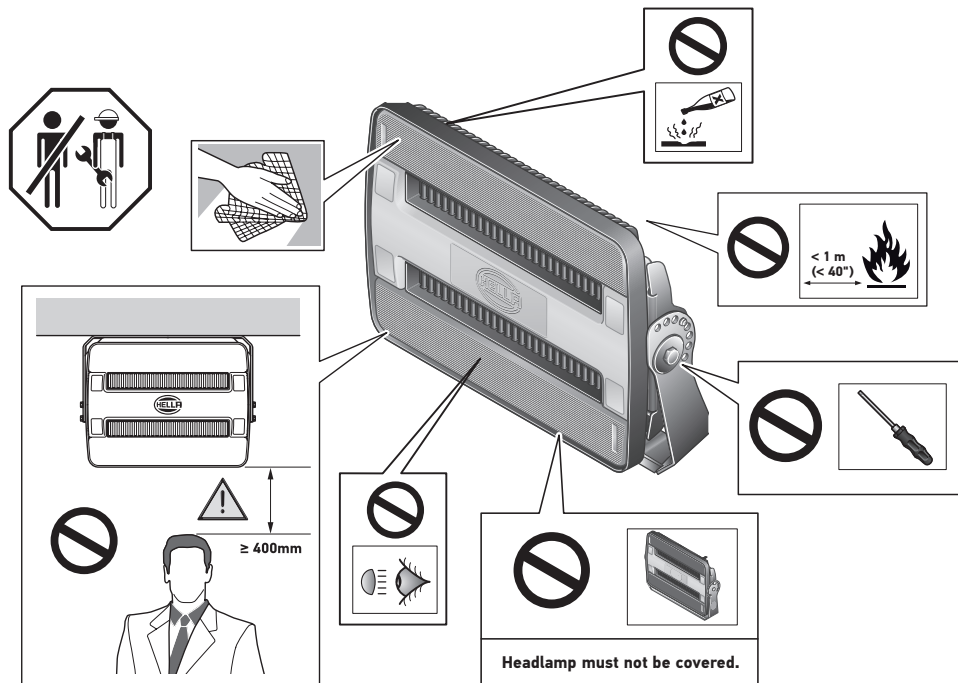
Disconnect



Connect

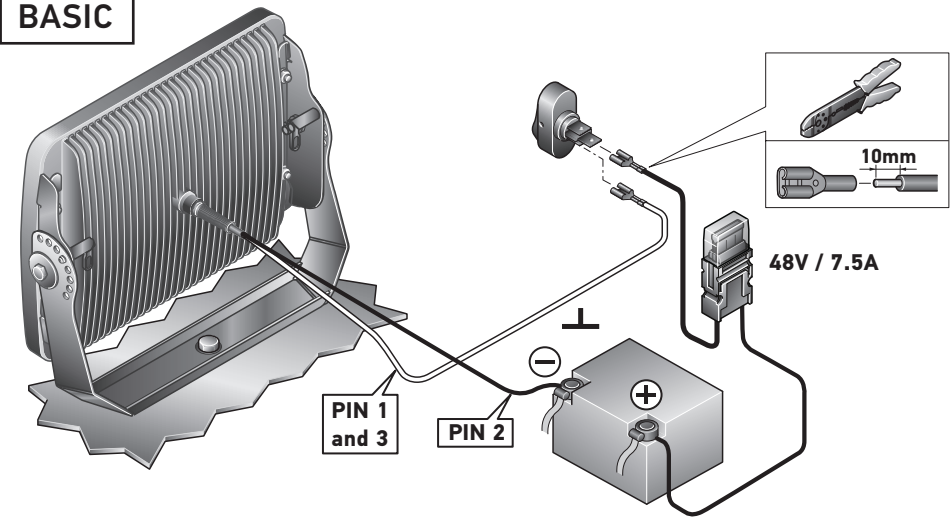


Look/See



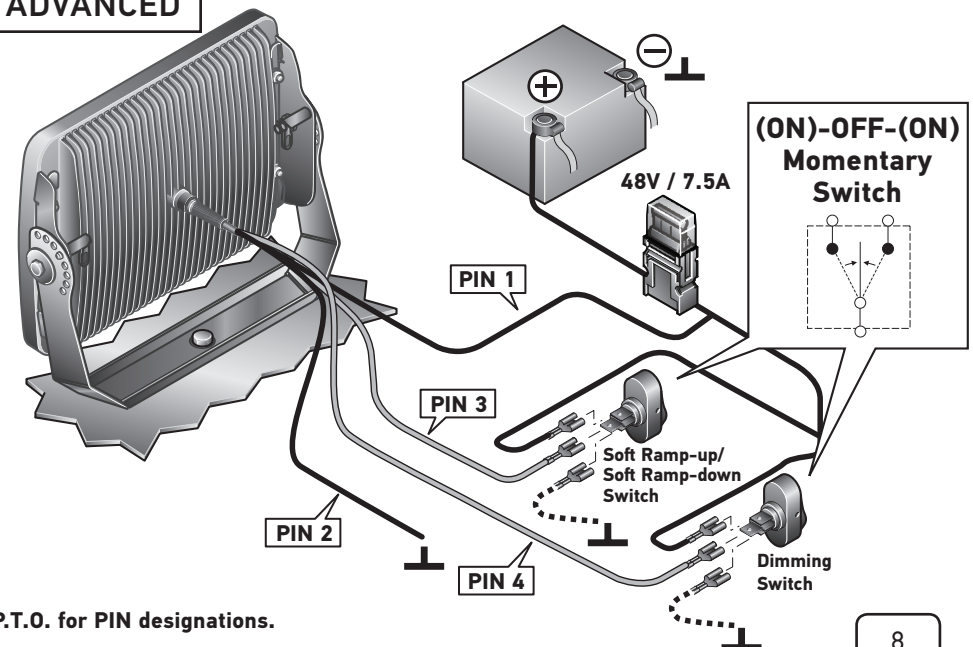
ELECTRICAL CONNECTION

BASIC



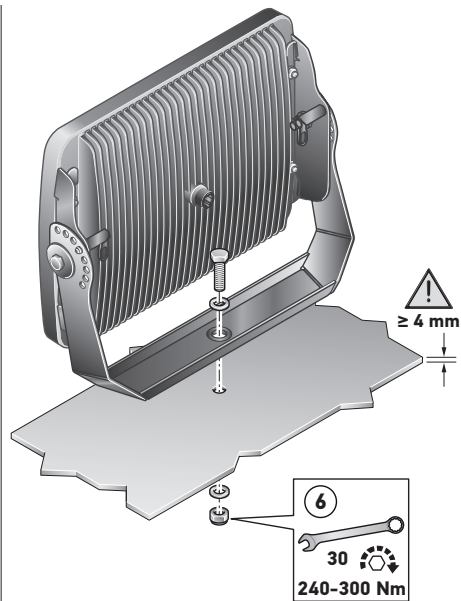
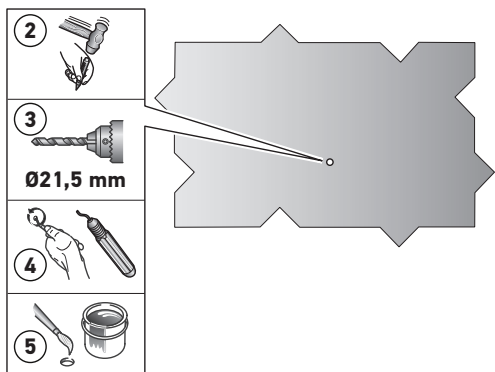
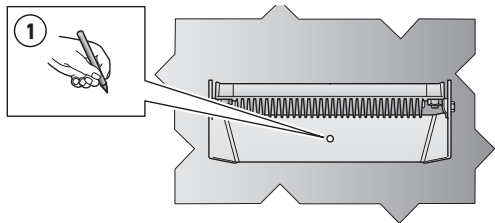
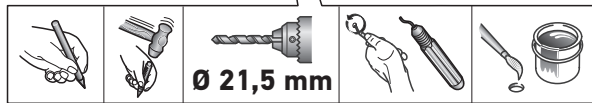
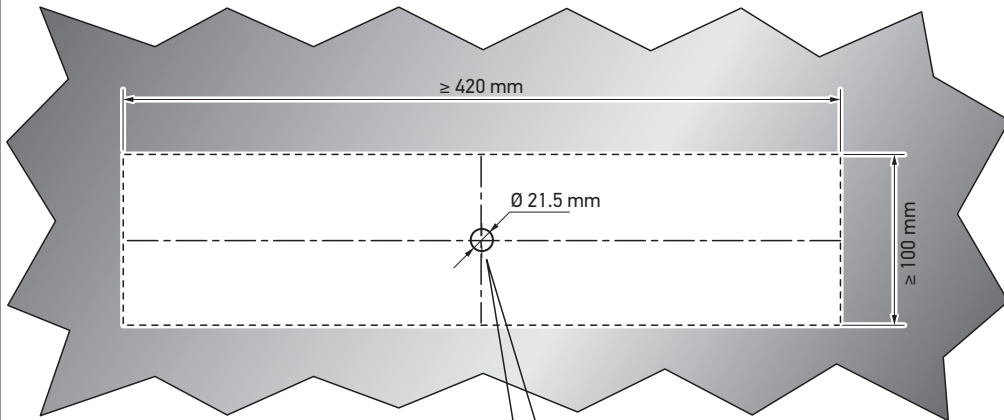
Accessory cable 8KB 958 304-001 can be used.

ADVANCED



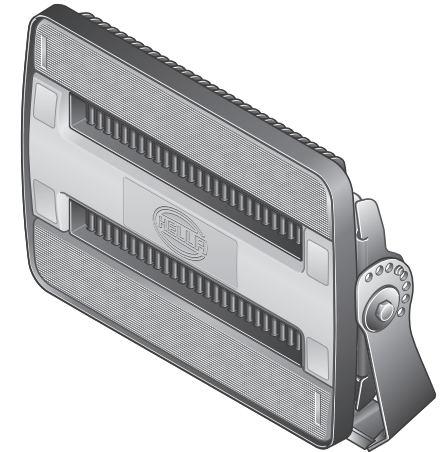
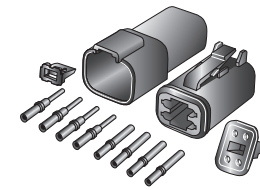
P.T.O. for PIN designations.

1GJ 011 872-221
 1GJ 011 872-231
 1GJ 011 872-241

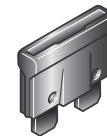


SCOPE OF DELIVERY

1GJ 011 872-221
 1GJ 011 872-231
 1GJ 011 872-241



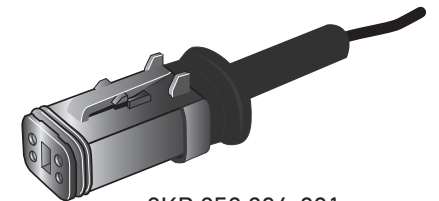
ACCESSORIES



7.5A 8JS 905 698-021 / 8772

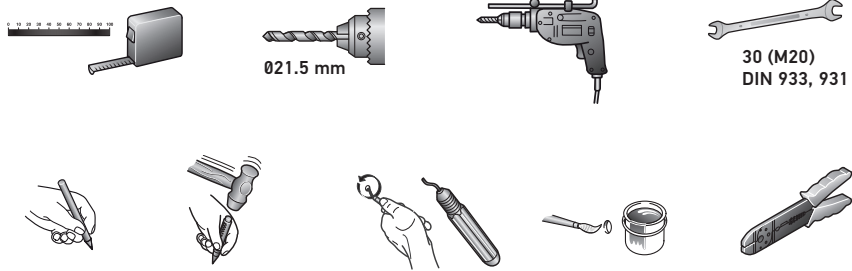


8JD 005 235-001 / 8718

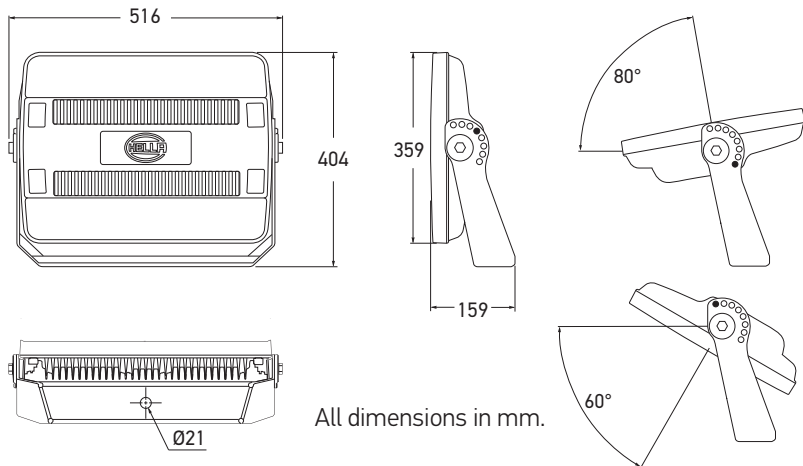


8KB 958 304-001

INSTALLATION TOOLS REQUIRED

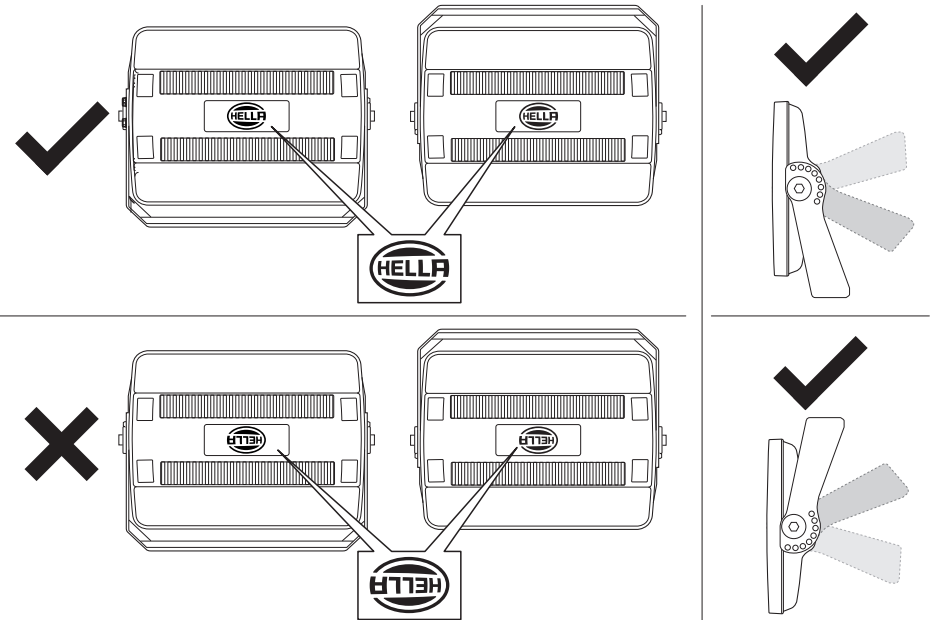


MOUNTING



CHANGING LAMP FROM UPRIGHT TO PENDANT CONFIGURATION

1GJ 011 872-221



- Lamp is supplied in upright configuration.
- Do not undo bracket side bolts or nuts.
- The four bracket mounting nuts on the back of lamp need to be undone.
- Rotate bracket 180° to pendant configuration.
- Re-torque the four bracket mounting nuts to 20 - 30 Nm. It is recommended to use Loctite 243 to prevent galling.

